

B05 19 0334

REGISTERED
PROFESSIONAL
LAND SURVEYOR

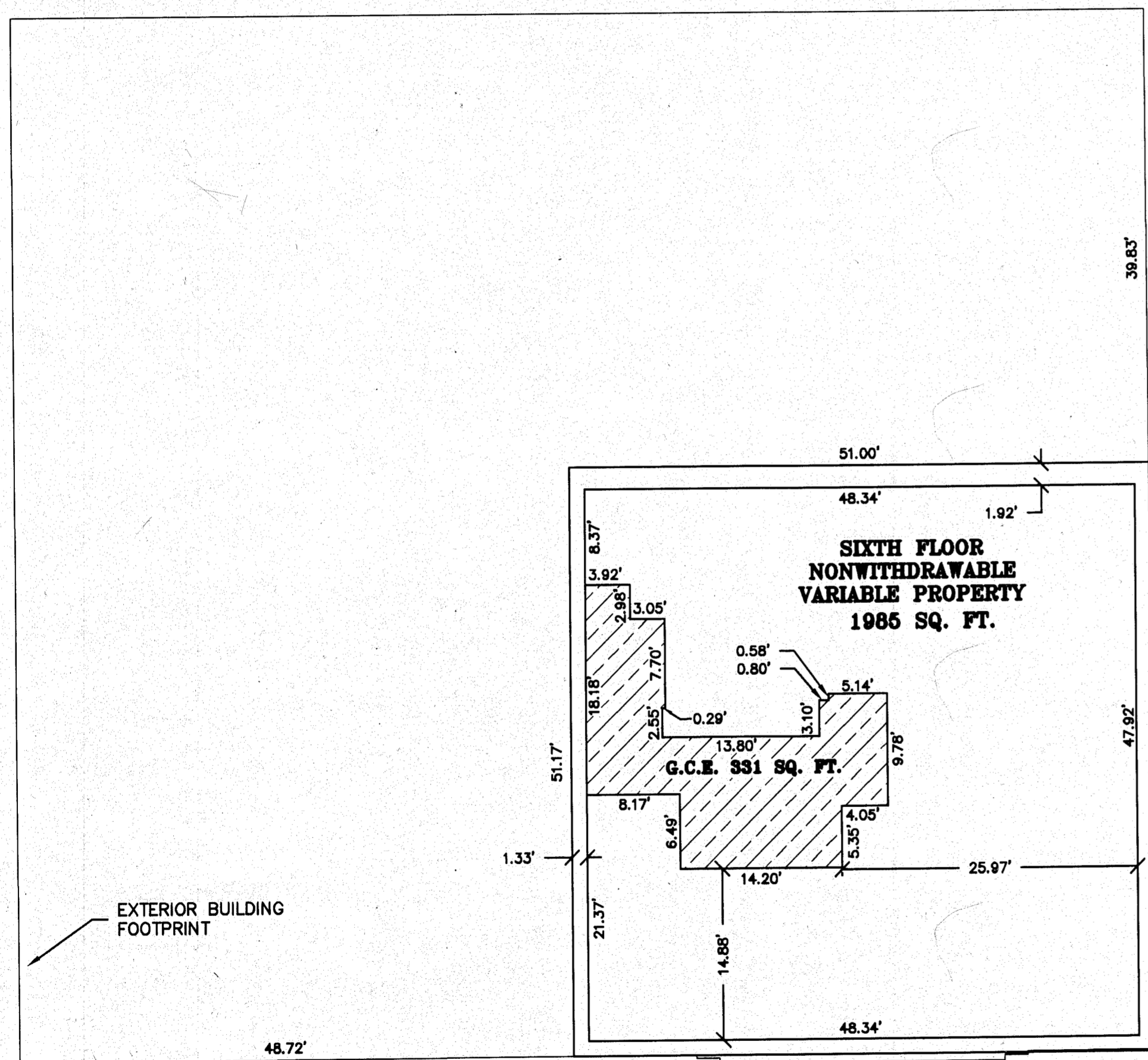
Danny K. Cummings
OREGON
JAN. 21, 1988
DANNY K. CUMMINGS
2316

RENEWAL DATE: 12-31-05

0 10 20
SCALE 1" = 10'



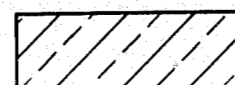
Danny K. Cummings, HEREBY CERTIFY THAT
THIS IS AN EXACT REPRODUCTION OF THE ORIGINAL.
Danny K. Cummings



SIXTH FLOOR

LEGEND

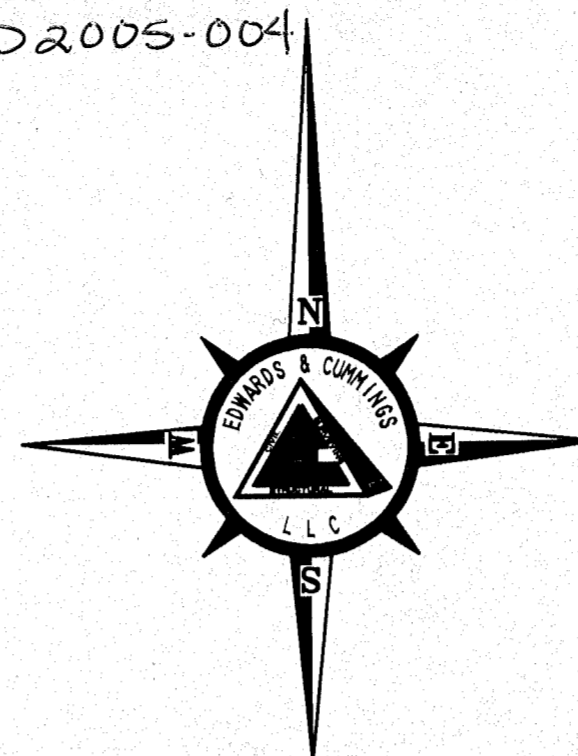
GENERAL COMMON ELEMENT (G.C.E.)



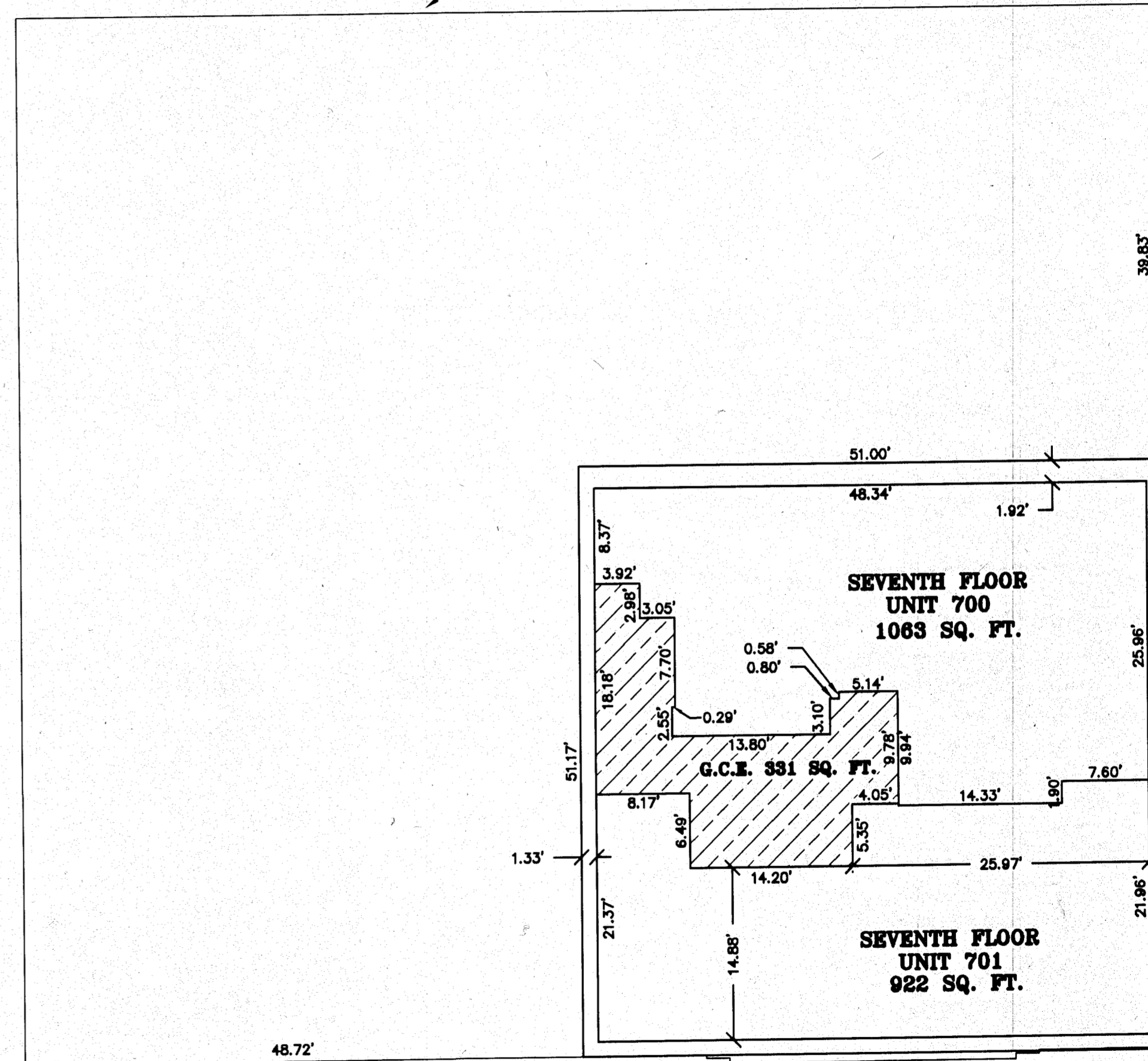
B-12

B05 19 0335
SD2005-004

BAKER TOWER CONDOMINIUM B05 19 0336
a Replat of Lot 2, a portion of Lots 1 and 3,
in Block 1 of the U.S. Townsite of Baker, and
Lot 6, and a portion of Lot 7, in Block D,
of M.E. Place's Addition,
within the SE1/4SE1/4 Section 17, and
within the NE1/4NE1/4 Section 20, T9S, R40E, W.M.,
Baker City, Baker County, Oregon



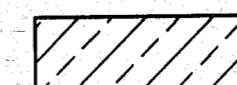
EXTERIOR BUILDING
FOOTPRINT



SEVENTH FLOOR

LEGEND

GENERAL COMMON ELEMENT (G.C.E.)



FILED MAY 12, 2005
BAKER COUNTY SURVEYOR
SURVEY NO. 7-40-60450