

B05 19 0325

REGISTERED PROFESSIONAL LAND SURVEYOR
Danny K. Cummings
OREGON
JAN. 21, 1988
DANNY K. CUMMINGS
2316

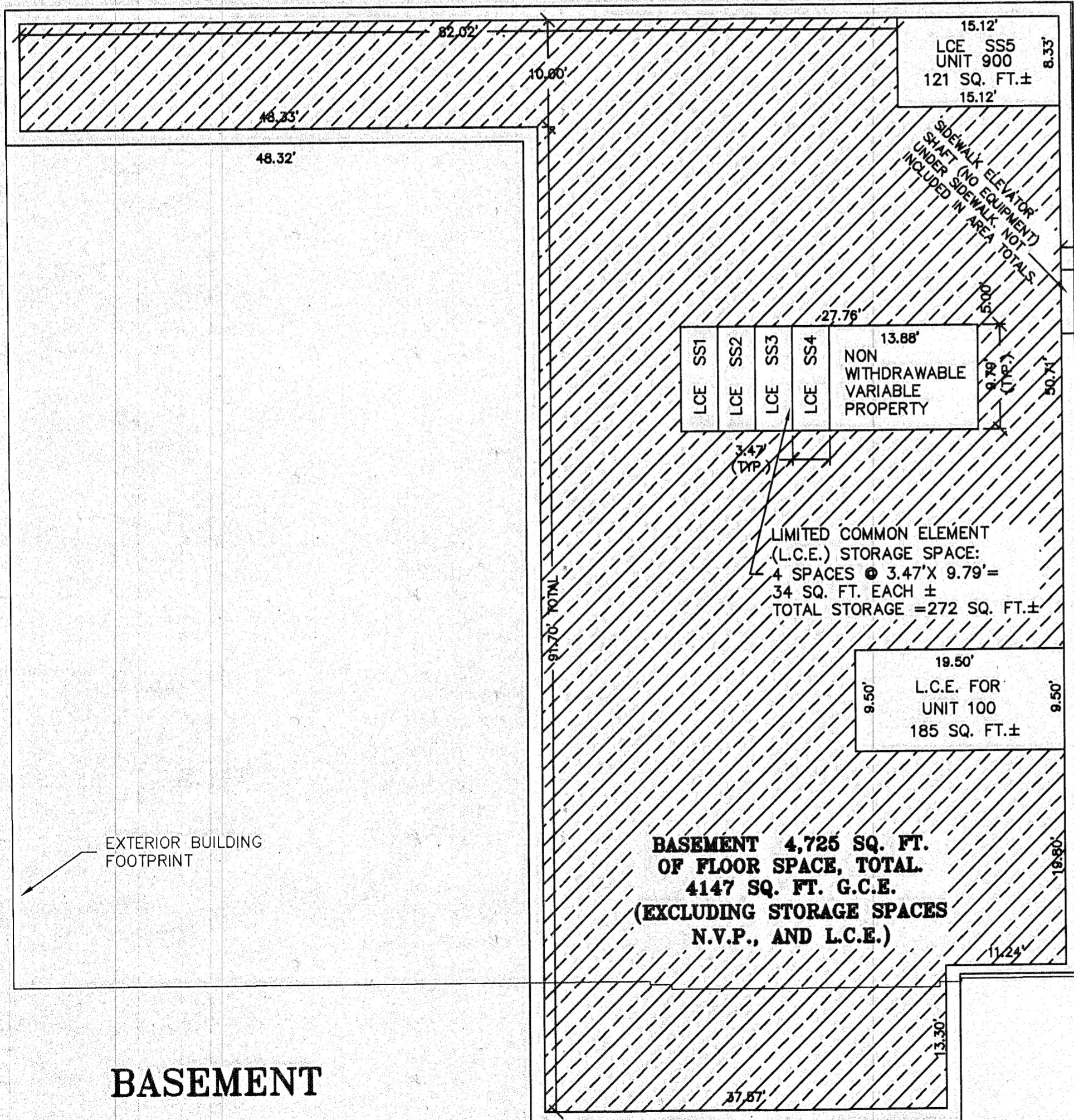
RENEWAL DATE: 12-31-05

0 10 20
SCALE 1" = 10'



Danny K. Cummings HEREBY CERTIFY THAT THIS IS AN EXACT REPRODUCTION OF THE ORIGINAL.
Danny K. Cummings

99.59'



EXTERIOR BUILDING FOOTPRINT

BASEMENT

NOTE: STORAGE SPACES ARE LIMITED COMMON ELEMENTS AND ARE ASSIGNED IN THE DECLARATION.

LEGEND

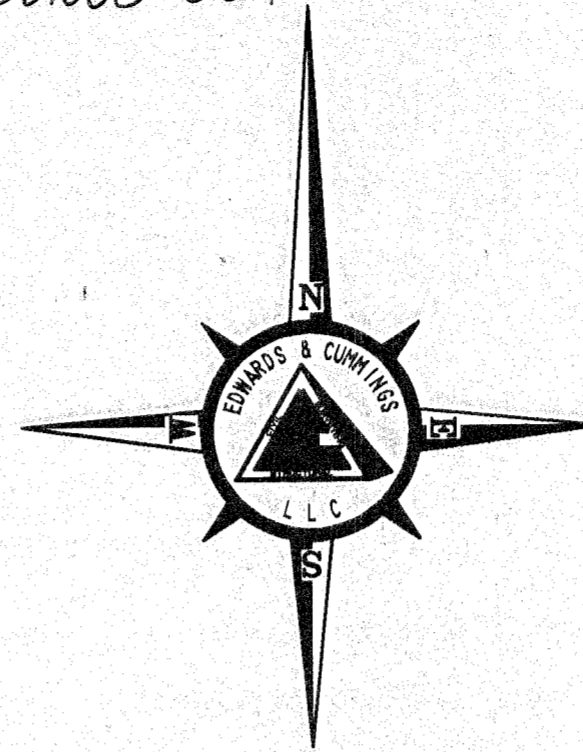
- GENERAL COMMON ELEMENT (G.C.E.)
- STORAGE SPACE SS
- NON-WITHDRAWABLE VARIABLE PROPERTY N.V.P.

DWG. No. SO-02055\final\B-1st.DWG

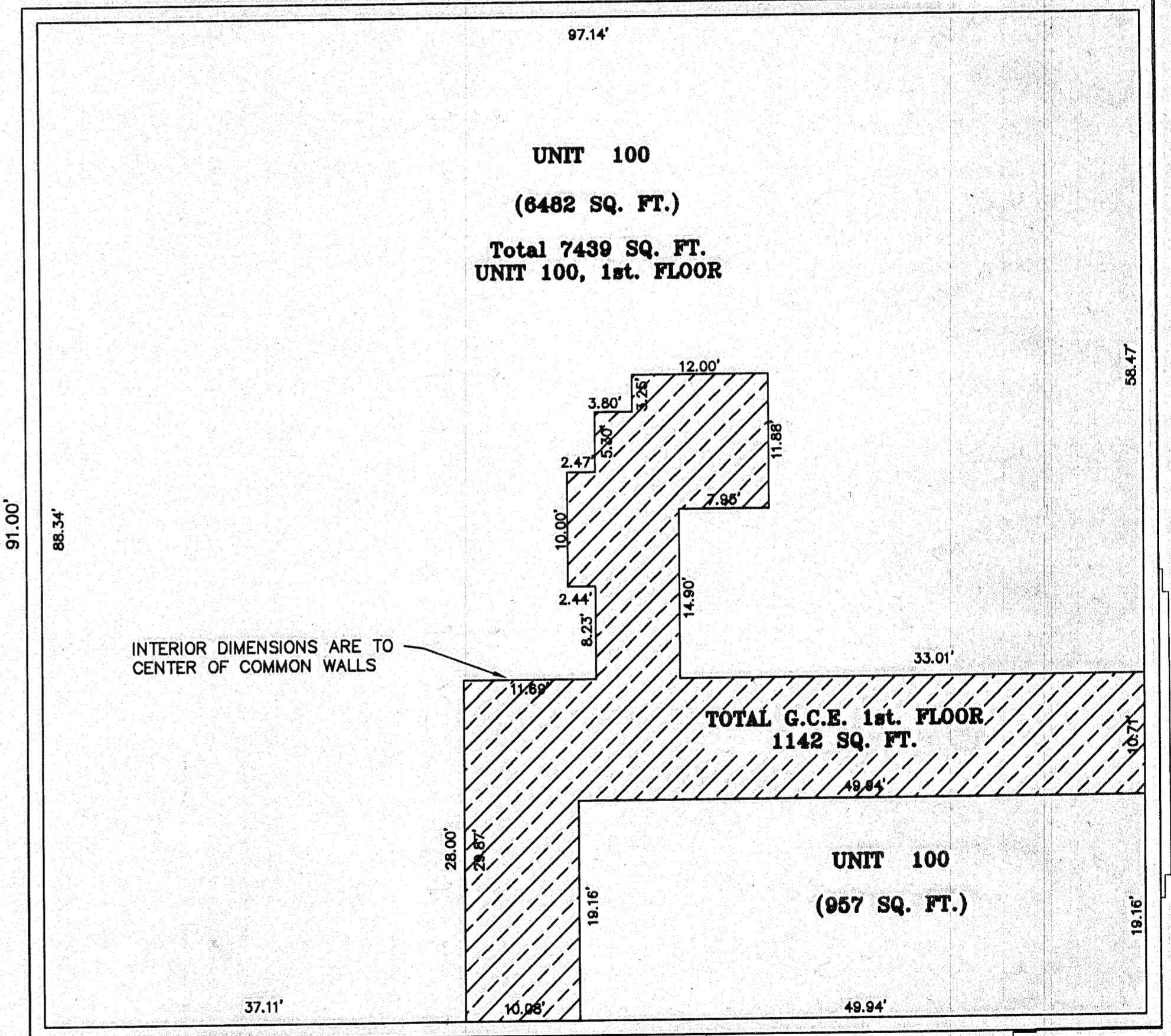
B05 19 0326

SD2005-004

BAKER TOWER CONDOMINIUM B05 19 0327
a Replat of Lot 2, a portion of Lots 1 and 3, in Block 1 of the U.S. Townsite of Baker, and Lot 6, and a portion of Lot 7, in Block D, of M.E. Place's Addition, within the SE1/4SE1/4 Section 17, and within the NE1/4NE1/4 Section 20, T9S, R40E, W.M., Baker City, Baker County, Oregon



EXTERIOR BUILDING FOOTPRINT
99.59'



INTERIOR DIMENSIONS ARE TO CENTER OF COMMON WALLS

0 10 20
SCALE 1" = 10'

LEGEND

- GENERAL COMMON ELEMENT (G.C.E.)

1st FLOOR

UNIT 100
COMMERCIAL

FILED May 12, 2005
BAKER COUNTY SURVEYOR
SURVEY NO. 9-40-6045D

B-12