

B05 19 0319  
**OWNERS/DEVELOPERS**  
HOMETOWN MANAGEMENT, LLC  
CONTACT: SHAYNE OLSEN  
P.O. BOX 91427  
PORTLAND, OREGON 97291

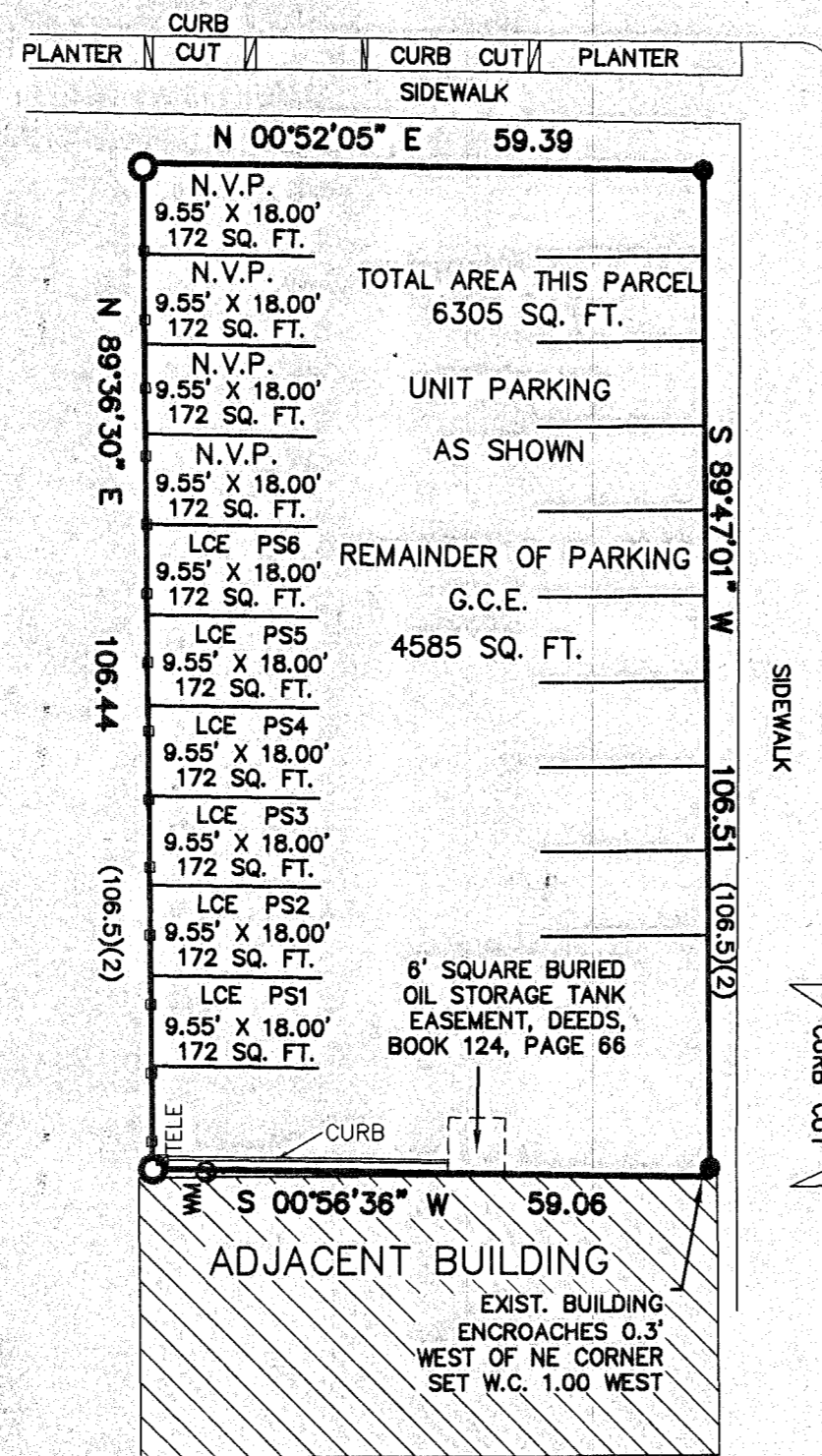
**PREPARED BY**  
EDWARDS & CUMMINGS, LLC  
156 SE 1st. AVE., SUITE 1  
ONTARIO, OREGON, 97914

B05 19 0320  
SD2005-004

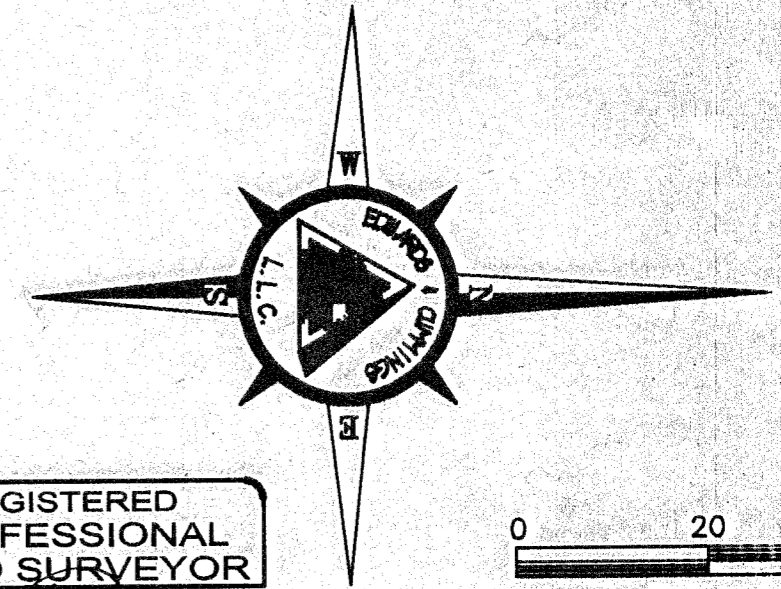
**BAKER TOWER CONDOMINIUM**  
a Replat of Lot 2, a portion of Lots 1 and 3,  
in Block 1 of the U.S. Townsite of Baker, and  
Lot 6, and a portion of Lot 7, in Block D,  
of M.E. Place's Addition,  
within the SE1/4SE1/4 Section 17, and  
within the NE1/4NE1/4 Section 20, T9S, R40E, W.M.  
Baker City, Baker County, Oregon  
**BUILDING AND PARKING PLAN VIEW**

**LEGEND**

PROPERTY LINE	=====
ORIGINAL LOT LINES	-----
BUILDING LINE	=====
ADJACENT BUILDING	=====
WATER VALVE	W X
FIRE HYDRANT	EH
LUMEN POLE	SP
TRAFFIC SIGNAL POLE	SP
CATCH BASIN	CB
GAS METER	WM
POWER BOX OR METER	P
SIGN AS NOTED	□
MANHOLE	MH
TELEPHONE RISER	TELE
WATER METER	WM
SET 5/8" REBAR W/PLASTIC CAP L.S. 2316	●
PARKING SPACE	PS
LIMITED COMMON ELEMENT	LCE
GENERAL COMMON ELEMENT	GCE
NONWITHDRAWABLE VARIABLE PROPERTY	N.V.P.

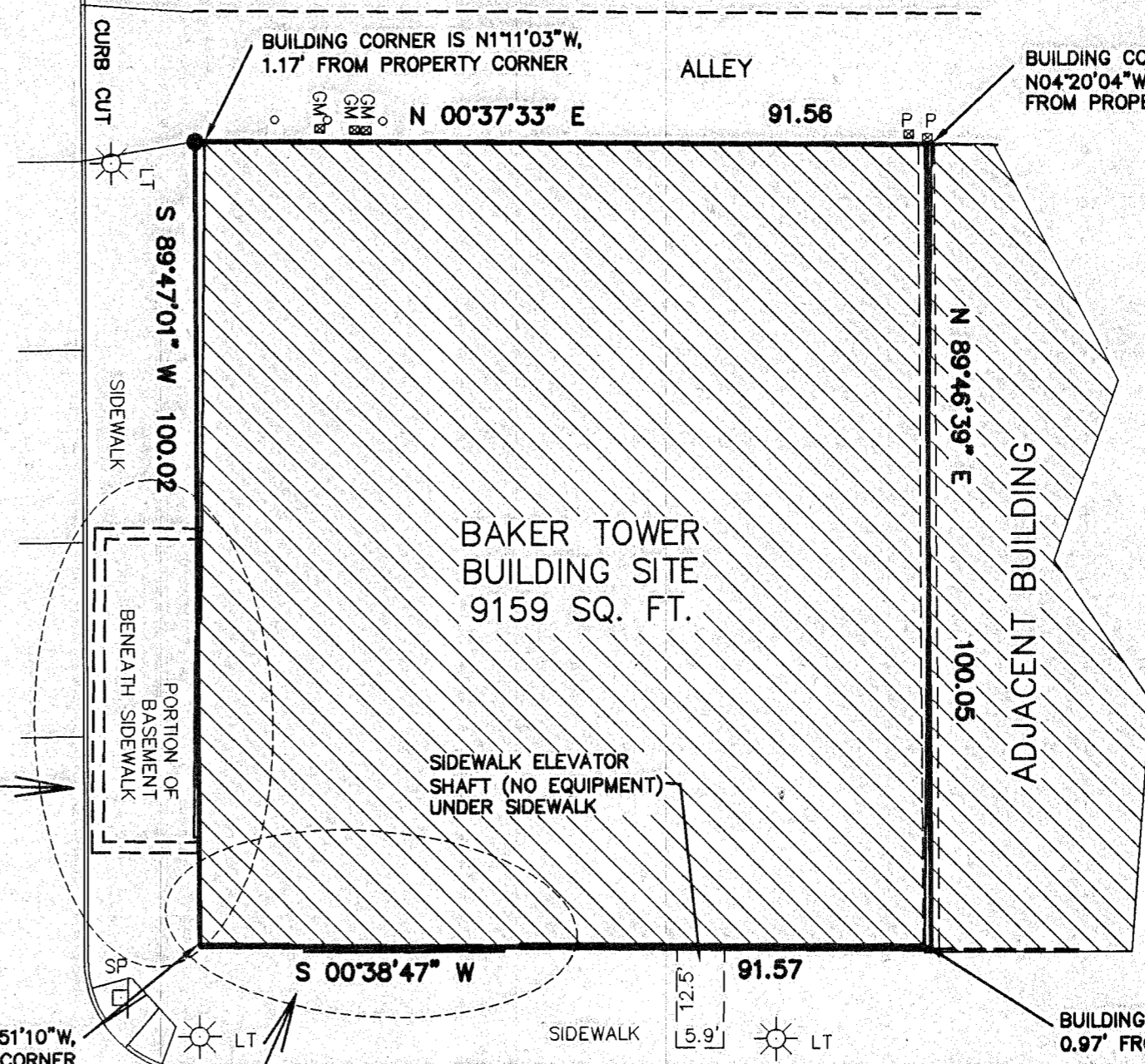
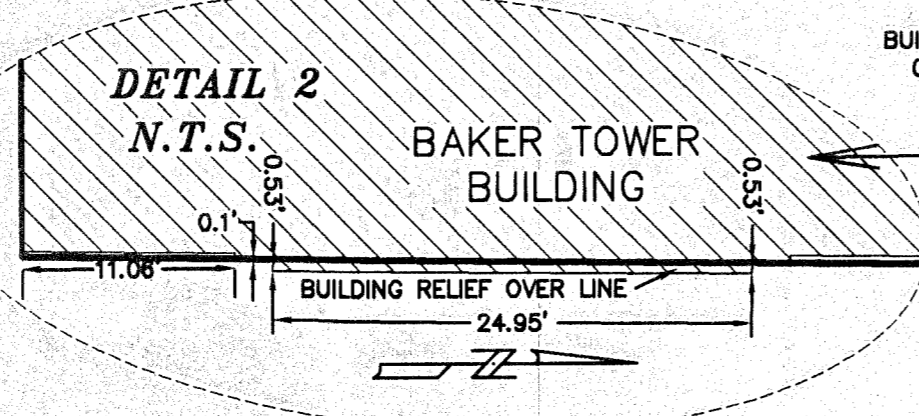
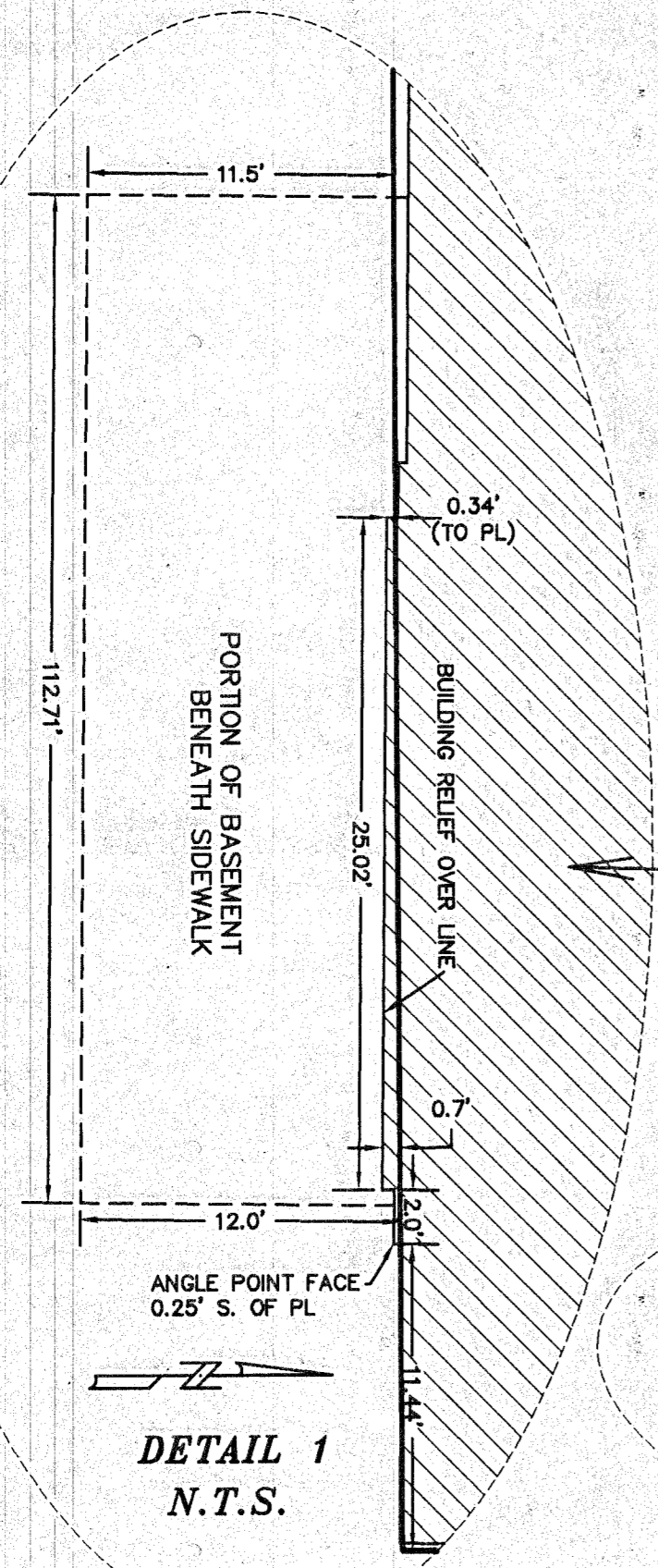


NOTE: PARKING SPACES ARE LIMITED COMMON ELEMENTS, AND ARE ASSIGNED IN THE DECLARATION.



**REGISTERED PROFESSIONAL LAND SURVEYOR**  
*Danny K. Cummings*  
OREGON  
JAN. 21, 1988  
DANNY K. CUMMINGS  
2316

RENEWAL DATE: 12-31-05  
I, Danny K. Cummings, HEREBY CERTIFY THAT THIS IS AN EXACT REPRODUCTION OF THE ORIGINAL.



MAIN STREET ( US HWY 30 )

FILED MAY 12, 2005  
BAKER COUNTY SURVEYOR  
SURVEY NO. 9-40-604SD

B-12