

INTERSECTION OF VALLEY AVE. AND EAST STREET

LEGEND

- Set 5/8" rebar with plastic cap marked "HANLEY ENGR. PLS 1817".
- Found, monument as noted.
- Found, monument in monument box.
- () Record Data Per Fisher's Addition Plat.
- [] Record Data Per Ba. Co. Surv. No. 9-40-23.
- { } Record Data Per Ba. Co. Deed No. 79 33 087.

REFERENCES

- Baker County Survey No. 9-40-2BC.
- Baker County Survey No. 9-40-23.
- Baker County Survey No. 9-40-131BC.
- Baker County Survey No. 9-40-136.
- Baker County Survey No. 9-40-193.
- Baker County Survey No. 9-40-508.

SCALE: 1" = 50'

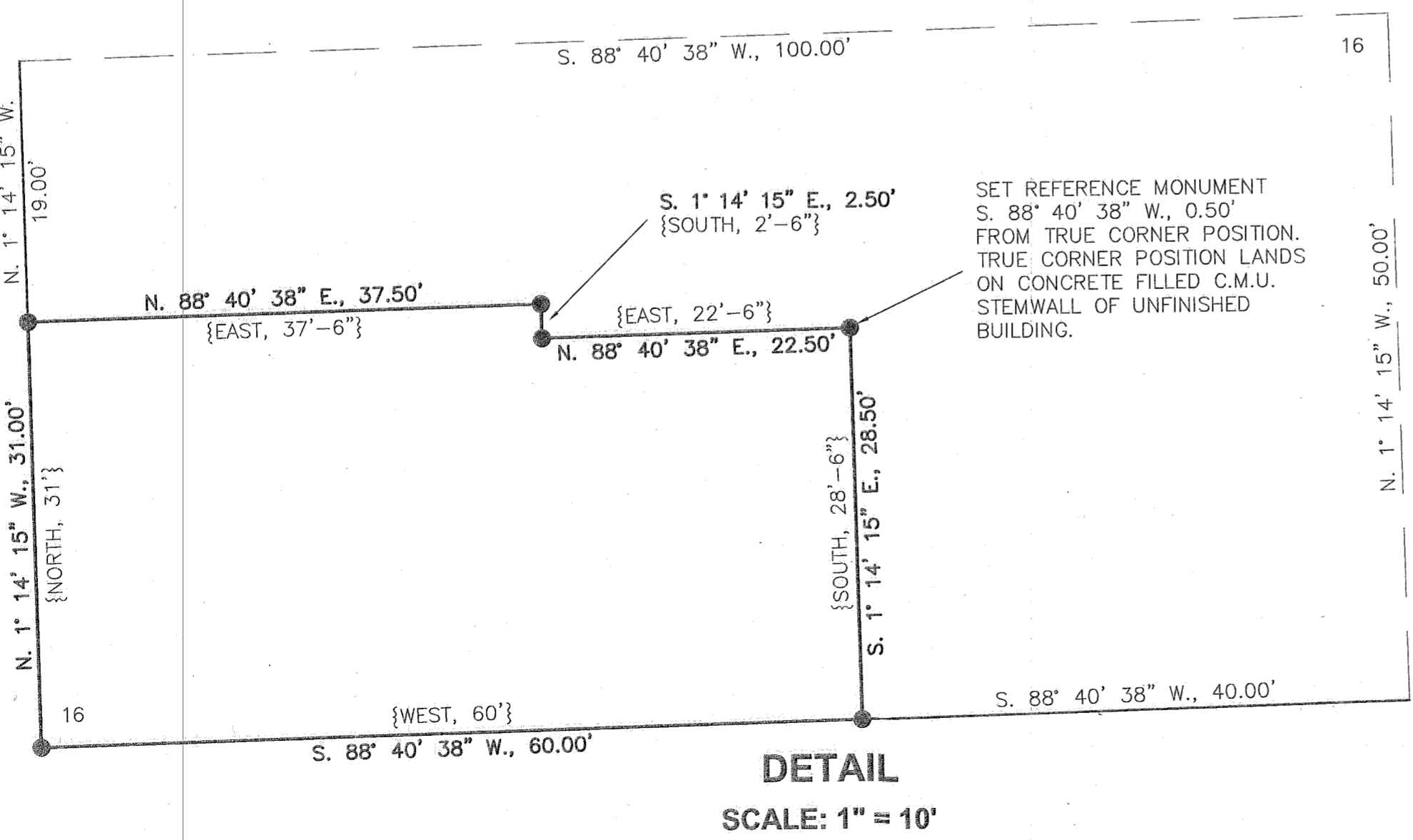
BASIS OF BEARING
 BA. CO. SUR. NO. 9-40-23
 VALLEY AVE. BETWEEN
 RESORT ST. & EAST ST.
 BEARS N. 88° 40' 38" E.

NARRATIVE

The purpose of this survey for Byron Brinton is to mark on the ground with proper monumentation the corners of his property located in Block "A", Fisher's Addition to Baker City as shown hereon. Monumentation shown on Baker County Survey No. 9-40-23 was recovered and held as the basis of bearing for this survey.

MAP OF SURVEY

Block "A", Fisher's Addition to Baker City, Oregon
 Surveyed July 29 thru October 7, 2004
 for Byron Brinton
 Scale: 1" = 50'



HANLEY ENGINEERING, INC.
 P.O. BOX 701, 2043 MAIN STREET, BAKER CITY, OREGON 97814 (541) 523-3803

REGISTERED PROFESSIONAL LAND SURVEYOR
Thomas J. Hanley
 OREGON
 JULY 13, 1979
 THOMAS J. HANLEY
 1817

FILED October 13, 2004
 BAKER COUNTY SURVEYOR
 SURVEY NO. 9-40-596

Renews June 30, 2005