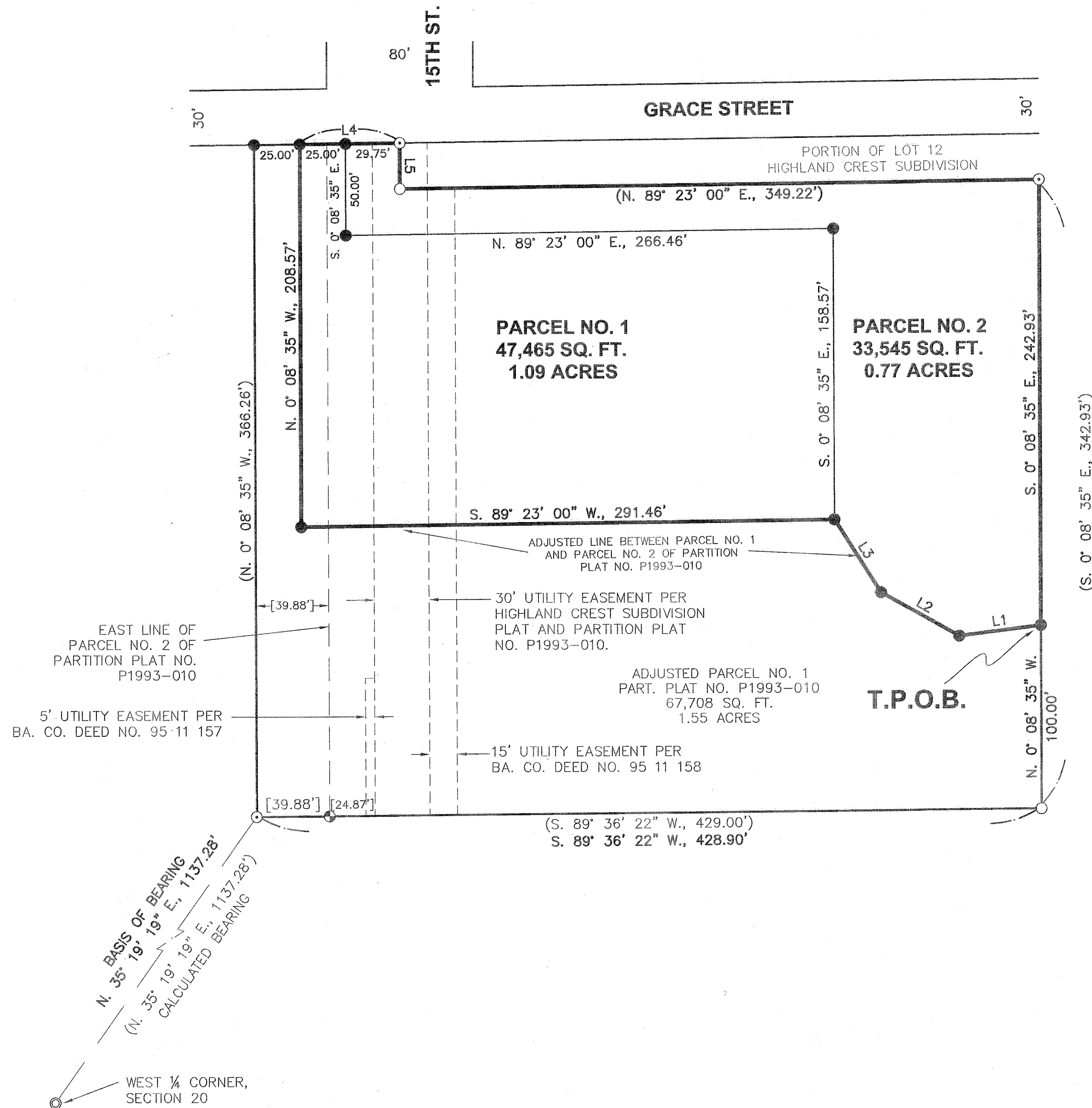


BASIS OF BEARING
 HIGHLAND CREST SUBDIVISION PLAT
 CALCULATED BEARING FROM THE
 WEST 1/4 CORNER, SECTION 20 TO
 THE SW CORNER OF LOT 11.

SCALE: 1" = 50'



LINE TABLE

LINE	BEARING	DISTANCE
L1	S. 82° 44' 30" W.	44.96'
L2	N. 60° 36' 16" W.	48.99'
L3	N. 32° 27' 45" W.	47.15'
L4	[N. 89° 23' 00" E.]	54.75'
L5	[S. 0° 00' 37" E.]	[25.00']

LEGEND

- Set 5/8" rebar with plastic cap marked "HANLEY ENGR. PLS 1817".
- Found, 5/8" rebar with plastic cap marked "HANLEY ENGR. PLS 1206" set by Highland Crest Subdivision Plat.
- ⊕ Found, 5/8" rebar with plastic cap marked "HANLEY ENGR. PLS 1206" set by Ba. Co. Part. Plat No. P1993-010.
- Found, 5/8" rebar set by Highland Crest Subdivision Plat.
- ⊙ Found, 2 1/2" brass cap monument set by Ba. Co. Sur. No. 9-40-563.
- ⊕ For Descriptive Purposes Only.
- () Record Data Per Highland Crest Subdivision Plat.
- [] Record Data Per Ba. Co. Part. Plat No. P1993-010.

HANLEY ENGINEERING, INC.
 P.O. BOX 701, 2043 MAIN STREET, BAKER CITY, OREGON 97814 (541) 523-3803

I, Thomas J. Hanley, hereby certify that this is an exact duplicate copy of the partition plat as submitted to the Baker County Clerk for recording.

Thomas J. Hanley
 Thomas J. Hanley

REGISTERED
 PROFESSIONAL
 LAND SURVEYOR
Thomas J. Hanley
 OREGON
 JULY 13, 1979
 THOMAS J. HANLEY
 1817

FILED MAY 6, 2004
 BAKER COUNTY SURVEYOR
 SURVEY NO. 9-40-590MP

Renews June 30, 2005