

LEGEND

- Set 5/8" rebar with plastic cap marked "HANLEY ENGR. PLS 1817".
- Found, monument as noted.
- Found, monument in monument box.
- () Record Data Per Ba. Co. Sur. No. 9-40-24BC.
- [] Record Data Per Ba. Co. Surv. No. 9-40-180BC.
- ////// Addition Boundary.

NARRATIVE

The purpose of this survey for Richard Langrell is to mark on the ground with proper monumentation the corners of the parcel described in Baker County Deed No. 85 02 021. Baker County Survey No. 9-40-25BC (City Survey of 1970) was held as the basis of bearing for this survey. The subject parcel was monumented according to record description calls, except the North-South lines are established parallel to Grove Street, as per the Narrative to Accompany Baker County Survey No. 9-40-180BC. The North line of the subject parcel is common with the South line of Mix's Addition. The South line of Mix's Addition was established parallel to Campbell Street centerline and 675' North of the original North Right of Way of Campbell Street per Baker County Survey No. 9-40-24BC. The interior angle of 90° 08' between Campbell Street and Grove Street (North) was held to establish Grove Street bearing. Baker County Survey No. 9-40-180BC states that the intersection of Grove Street (North) & Campbell Street is S. 88° 55' 57" W., 4.54' from the monument marking the intersection of Grove Street (South) & Campbell Street. By holding the found approximate 2" diameter iron pipe as the East Right of Way of Grove Street and holding the interior angle of 90° 08' between Campbell Street & Grove Street, the offset between Grove Street centerlines is 5.00', not 4.54'. This is supported by Baker County Survey No. 9-40-489.

REFERENCES

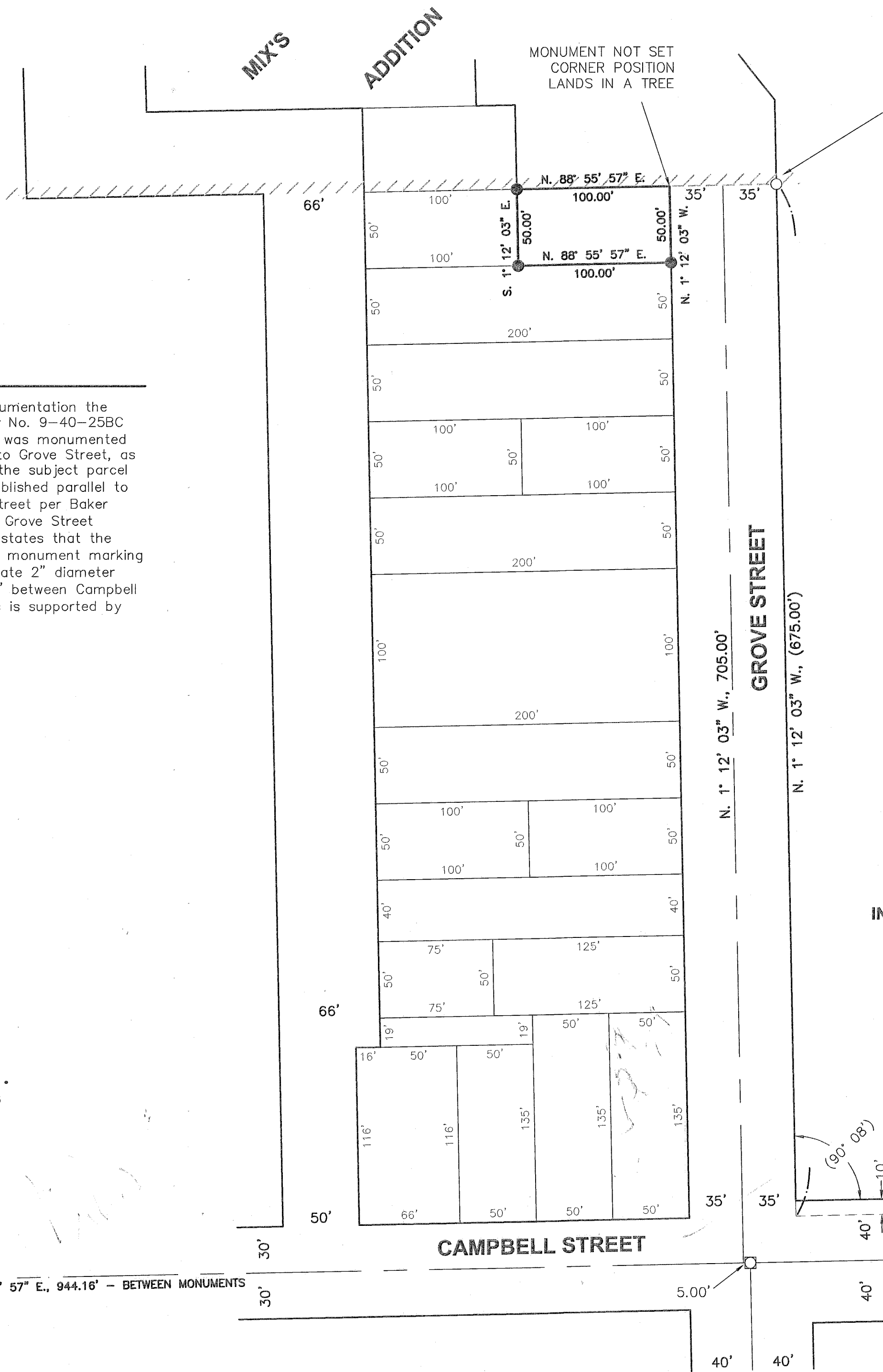
- Baker County Survey No. 9-40-24BC.
- Baker County Survey No. 9-40-25BC.
- Baker County Survey No. 9-40-180BC.
- Baker County Survey No. 9-40-489.
- Baker County Survey No. 9-40-580.
- Baker County Deed Volume "L", Page 88.
- Baker County Deed Book 163, Page 1103.
- Baker County Deed No. 85 02 021.

HANLEY ENGINEERING, INC.

P.O. BOX 701, 2043 MAIN STREET, BAKER CITY, OREGON 97814 (541) 523-3803

WEST ¼ CORNER, SECTION 16
SOUTHWEST CORNER BLOCK 1,
OF JENKINS TRACT.

BASIS OF BEARING - N. 88° 55' 57" E., 944.16' - BETWEEN MONUMENTS



BASIS OF BEARING
BA. CO. SUR. NO. 9-40-25BC.
CAMPBELL STREET BEARS
N. 88° 55' 57" E.

SCALE: 1" = 60'

MAP OF SURVEY

IN THE SW¼ NW¼ OF SECTION 16,

T. 9 S., R. 40 E., W.M.,

BAKER CITY, OREGON

Surveyed January 13 thru February 9, 2004

for Richard Langrell

Scale: 1" = 60'

REGISTERED
PROFESSIONAL
LAND SURVEYOR

Thomas J. Hanley
OREGON
JULY 13, 1979
THOMAS J. HANLEY
1817

Renews June 30, 2005

FILED February 11, 2004
BAKER COUNTY SURVEYOR
SURVEY NO. 9-40-586