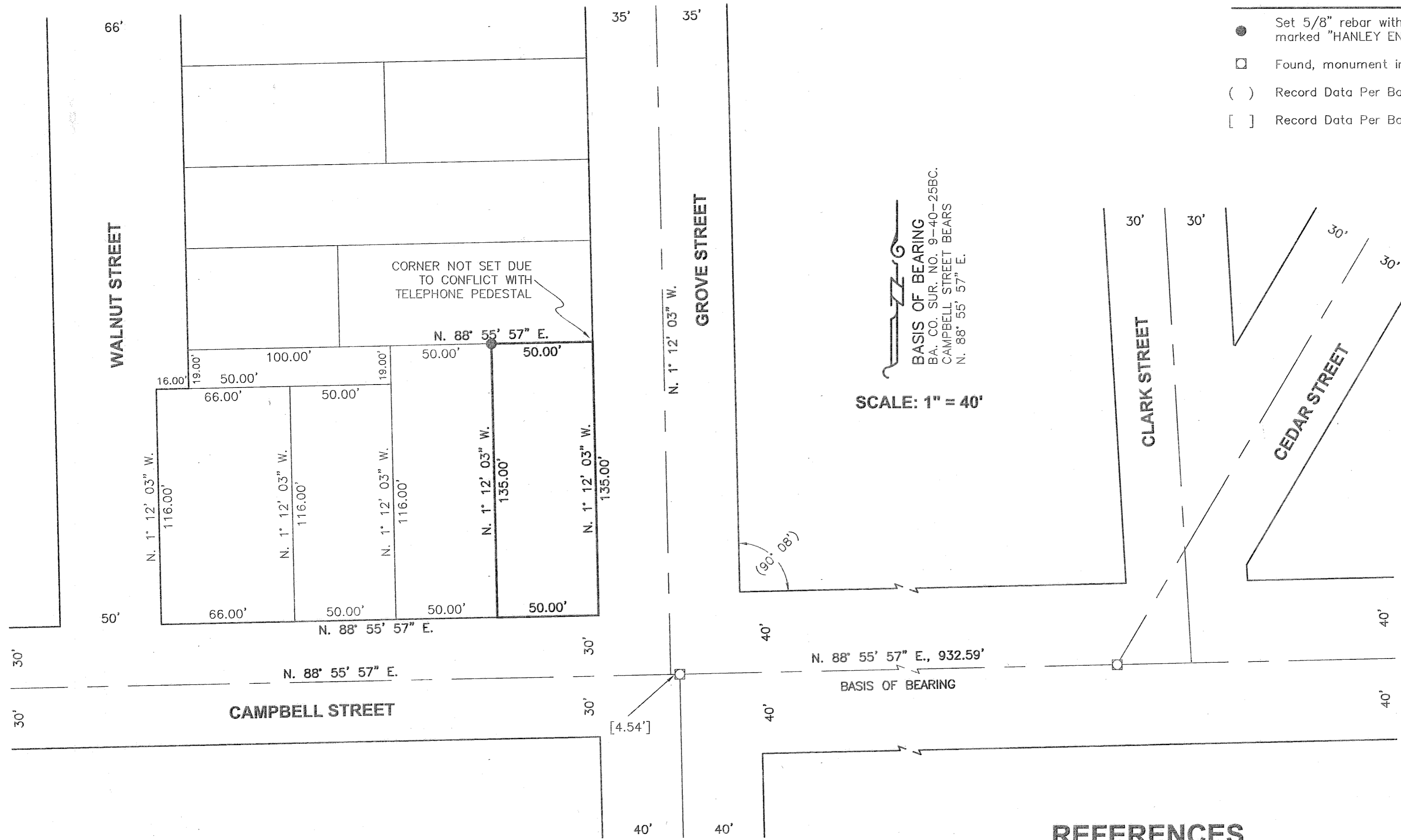


LEGEND

- Set 5/8" rebar with plastic cap marked "HANLEY ENGR. PLS 1817".
- Found, monument in monument box.
- () Record Data Per Ba. Co. Sur. No. 9-40-24BC.
- [] Record Data Per Ba. Co. Surv. No. 9-40-180BC.



BASIS OF BEARING
 BA. CO. SUR. NO. 9-40-25BC.
 CAMPBELL STREET BEARS
 N. 88° 55' 57" E.
SCALE: 1" = 40'

REFERENCES

- Baker County Survey No. 9-40-24BC.
- Baker County Survey No. 9-40-25BC.
- Baker County Survey No. 9-40-180BC.
- Baker County Deed Volume "L", Page 88.
- Baker County Deed Book 163, Page 1103.
- Baker County Deed No. 91 23 012.

NARRATIVE

The purpose of this survey for Bob Black is to mark on the ground with proper monumentation the North line of the parcel described in Baker County Deed No. 91 23 012. Baker County Survey No. 9-40-25BC (City Survey of 1970) was held as the basis of bearing for this survey. The subject parcel was monumented according to record description calls, except the North-South lines are established parallel to Grove Street, as per the Narrative to Accompany Baker County Survey No. 9-40-180BC.

HANLEY ENGINEERING, INC.
 P.O. BOX 701, 2043 MAIN STREET, BAKER CITY, OREGON 97814 (541) 523-3803

MAP OF SURVEY
IN THE SW 1/4 NW 1/4 OF SECTION 16,
T. 9 S., R. 40 E., W.M.,
BAKER CITY, OREGON

FILED November 14, 2003
 BAKER COUNTY SURVEYOR
 SURVEY NO. 9-40-580

Surveyed November 7, 2003
 for Bob Black
 Scale: 1" = 40'

REGISTERED
 PROFESSIONAL
 LAND SURVEYOR
Thomas J. Hanley
 OREGON
 JULY 13, 1979
 THOMAS J. HANLEY
 1817

Renews June 30, 2005