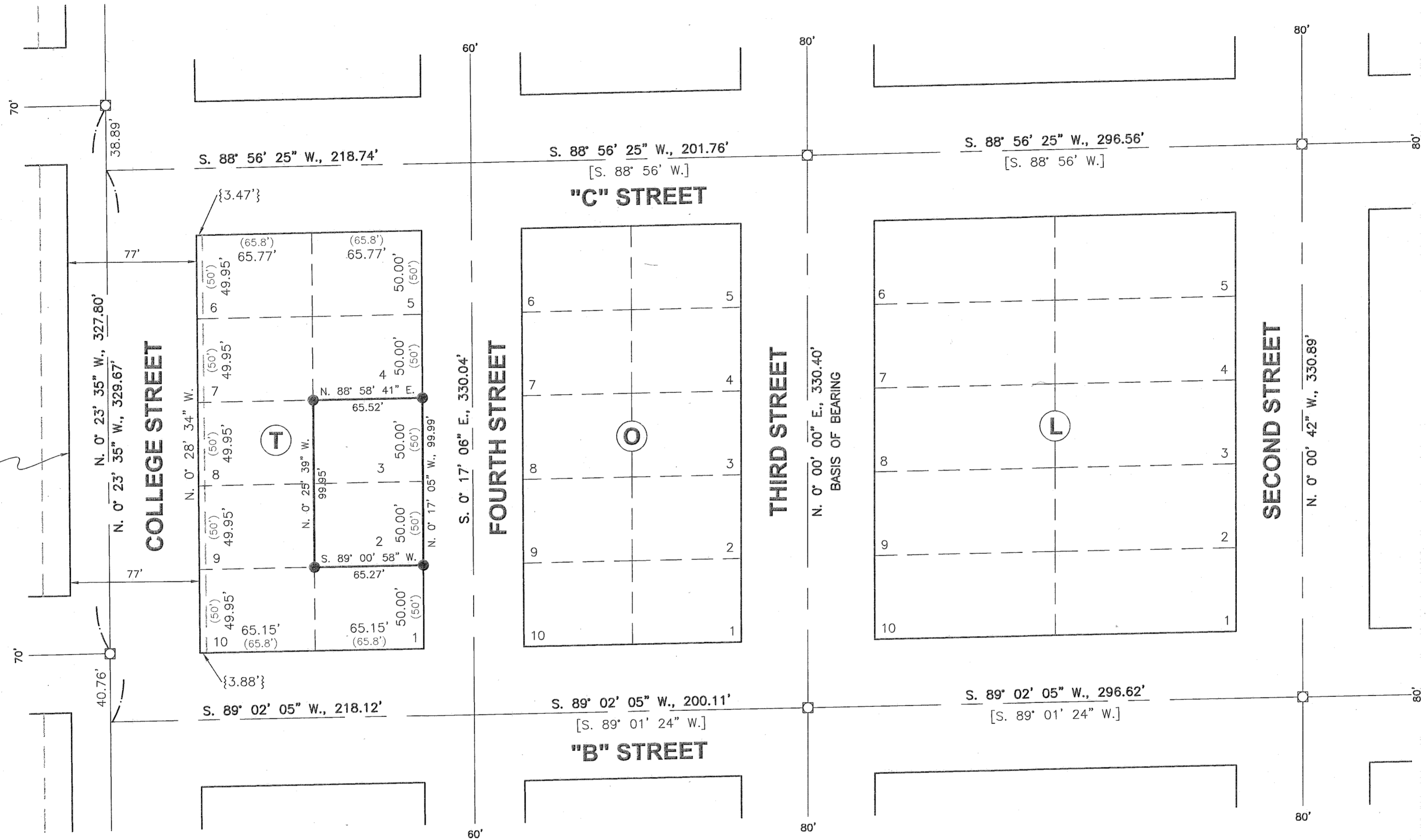

SCALE: 1" = 50'
 BASIS OF BEARING
 BA. CO. SUR. NO. 9-40-335
 Q. OF THIRD STREET BEARS
 NORTH BET. "B" & "C" STREETS

WEST LINE OF COLLEGE STREET ESTABLISHED 1' WEST OF SIDEWALK



NARRATIVE

The purpose of this survey for Michelle Matthey is to mark on the ground with proper monumentation the corners of Lots 2 and 3, Block "T", Father DeRoo's Addition to Baker City. Street monumentation as shown on Baker County Survey No. 9-40-335 was recovered this survey. The boundaries of Block T were reconstructed as described on said Survey No. 9-40-335.

LEGEND

- Set 5/8" rebar with plastic cap marked "HANLEY ENGR. PLS 1817".
- Found, monument in monument box.
- () Plat Distance.
- { } Record Data Per Ba. Co. Surv. No. 9-40-3BC.
- [] Record Data Per Ba. Co. Surv. No. 9-40-335.

HANLEY ENGINEERING, INC.

P.O. BOX 701, 2043 MAIN STREET, BAKER CITY, OREGON 97814 (541) 523-3803



MAP OF SURVEY
LOTS 2 AND 3, BLOCK "T",
FATHER DE ROO'S ADDITION
TO BAKER CITY, OREGON

Surveyed July 3 thru 9, 2003
 for Michelle Matthey
 Scale: 1" = 50'

FILED July 23, 2003
 BAKER COUNTY SURVEYOR
 SURVEY NO. 9-40-573

REGISTERED
 PROFESSIONAL
 LAND SURVEYOR

Thomas J. Hanley
 OREGON
 JULY 13, 1979
 THOMAS J. HANLEY
 1817

Renews June 30, 2005