

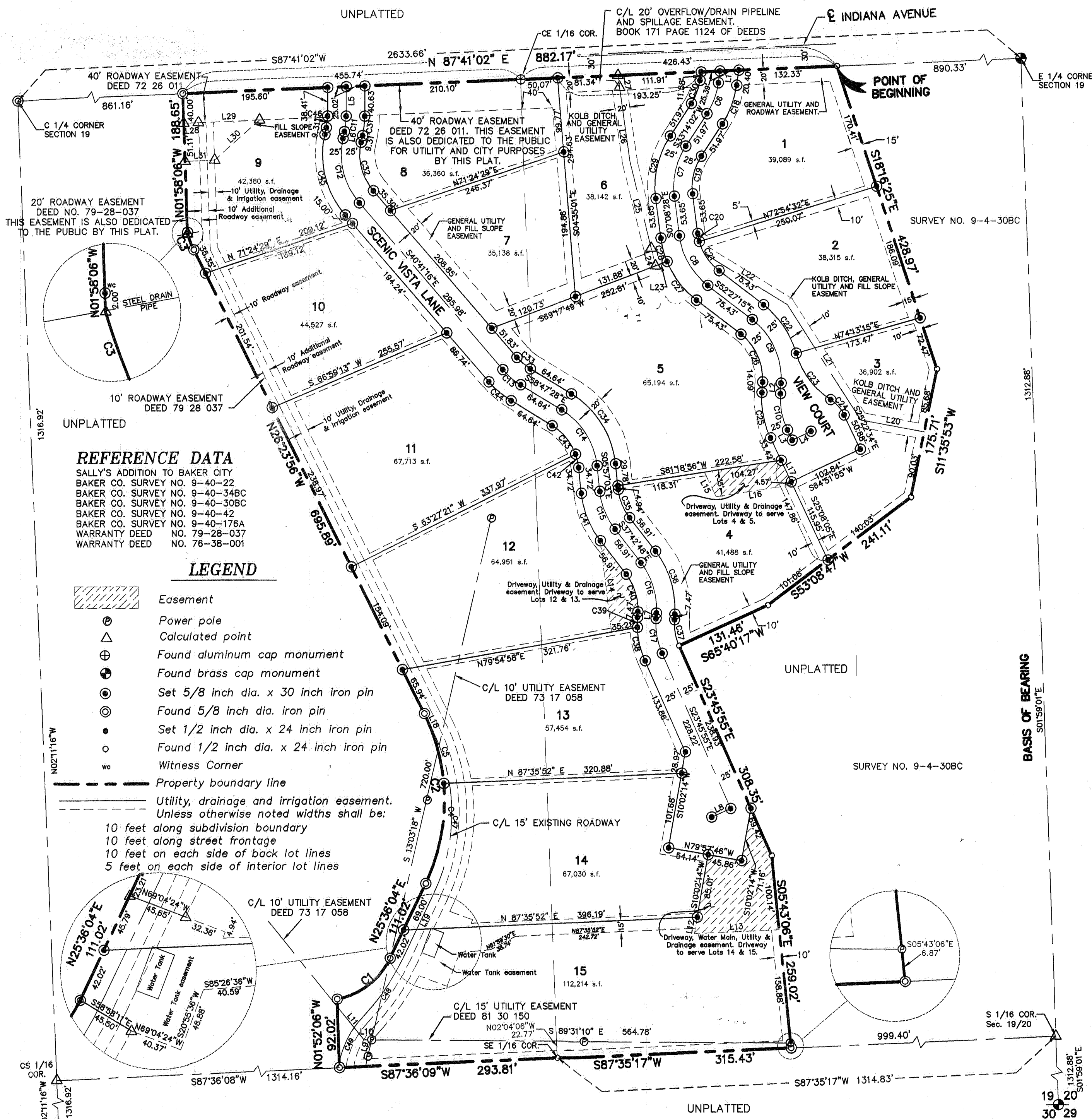
# SCENIC VISTA ESTATES SUBDIVISION

A PORTION OF THE NW 1/4 SE 1/4 & A PORTION OF THE NE 1/4 SE 1/4, SECTION 19, T. 9 S., R. 40 E., W.M., BAKER CITY, BAKER COUNTY, OREGON  
2002

SALLY'S ADDITION TO BAKER CITY

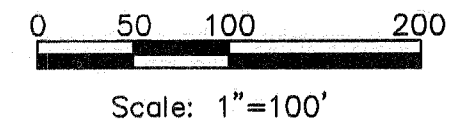
I, GERALD L. EARL, HEREBY CERTIFY THAT THIS IS AN EXACT DUPLICATE COPY OF THE PARTITION PLAT AS SUBMITTED TO THE BAKER COUNTY CLERK FOR RECORDING.

*Gerald L. Earl*  
GERALD L. EARL



LINE	BEARING	LENGTH
L1	S07°41'17"W	15.99
L2	S03°34'46"W	14.09
L3	S25°08'05"E	15.26
L4	N64°51'55"E	28.00
L5	S00°13'39"W	39.52
L6	S12°17'47"W	9.31
L7	S03°41'07"W	7.47
L8	S66°14'05"W	28.00
L9	S13°03'18"W	11.89
L10	S89°31'10"E	4.95
L11	N38°52'06"W	56.60
L12	S10°02'14"W	22.53
L13	N87°35'52"E	114.36
L14	N06°59'00"W	123.64
L15	S25°08'05"E	36.49
L16	S81°18'56"W	104.27
L17	S25°08'05"E	31.92
L18	N26°23'56"W	24.75
L19	N25°36'04"E	96.82
L20	N79°31'03"W	87.27
L21	N32°32'11"W	184.08
L22	N58°16'17"W	131.19
L23	S69°17'49"W	16.55
L24	S13°44'25"E	24.47
L25	S13°44'25"E	119.93
L26	S07°47'19"E	101.02
L27	S07°47'19"E	15.99
L28	S87°41'02"W	20.00
L29	S87°41'02"W	62.45
L30	S48°31'25"W	80.94
L31	S87°41'02"W	40.00

CURVE	ARC	RADIUS	DELTA	TANGENT	CHORD BRG.	LONG CH.
C1	93.42	98.79	54°10'58"	50.53	N52°39'34"E	89.98
C2	236.35	260.44	51°59'43"	127.01	N00°24'01"W	228.32
C3	22.82	130.22	10°02'21"	11.44	S21°22'45"E	22.79
C4	138.05	260.44	30°22'17"	70.69	N10°24'42"E	136.44
C5	98.29	260.44	21°37'27"	49.74	N15°35'10"W	97.71
C6	44.59	100.00	25°32'44"	22.67	N20°27'40"E	44.22
C7	70.47	100.00	40°22'29"	36.77	S13°02'47"W	69.02
C8	79.09	100.00	45°18'47"	41.74	S29°47'51"E	77.04
C9	97.80	100.00	56°02'01"	53.21	N24°26'14"W	93.95
C10	50.12	100.00	28°42'52"	25.60	S10°46'39"E	49.59
C11	21.06	100.00	12°04'08"	10.57	N06°15'43"E	21.03
C12	92.47	100.00	52°59'03"	49.84	S14°11'45"E	89.21
C13	31.60	100.00	18°06'12"	15.93	S49°44'22"E	31.46
C14	92.22	100.00	52°50'25"	49.68	N32°22'15"W	88.99
C15	55.44	100.00	31°45'45"	28.45	S21°49'55"E	54.73
C16	72.25	100.00	41°23'55"	37.79	N17°00'50"W	70.69
C17	47.91	100.00	27°27'02"	24.42	S10°02'24"E	47.45
C18	55.73	125.00	25°32'44"	28.34	N20°27'40"E	55.27
C19	52.85	75.00	40°22'29"	27.58	S13°02'47"W	51.76
C20	11.07	75.00	8°27'11"	5.54	S11°22'03"E	11.06
C21	48.25	75.00	36°51'36"	24.99	S34°01'27"E	47.42
C22	80.01	125.00	36°40'30"	41.43	N34°07'00"W	78.65
C23	79.50	110.00	41°24'28"	41.57	S36°28'59"E	77.78
C24	27.76	50.00	31°48'39"	14.25	N41°18'53"W	27.40
C25	62.64	125.00	28°42'52"	31.99	S10°46'39"E	61.99
C26	73.35	75.00	56°02'01"	39.91	N24°26'14"W	70.46
C27	68.12	125.00	30°18'28"	33.85	S37°18'01"E	65.35
C28	32.74	125.00	15°00'19"	16.46	S14°38'37"E	32.64
C29	88.08	125.00	40°22'29"	45.96	S13°02'47"W	86.27
C30	33.44	75.00	25°32'44"	17.00	N20°27'40"E	33.16
C31	26.33	125.00	12°04'08"	13.21	N06°15'43"E	26.28
C32	69.36	75.00	52°59'03"	37.38	S14°11'45"E	66.91
C33	23.70	75.00	18°06'12"	11.95	S49°44'22"E	23.60
C34	115.28	125.00	52°50'25"	62.11	N32°22'15"W	111.24
C35	41.58	75.00	31°45'45"	21.34	S21°49'55"E	41.05
C36	90.32	125.00	41°23'55"	47.23	N17°00'50"W	88.37
C37	35.93	75.00	27°27'02"	18.32	S10°02'24"E	35.59
C38	46.50	125.00	21°18'51"	23.52	S13°08'30"E	46.23
C39	13.39	125.00	6°08'11"	6.70	S00°37'01"W	13.38
C40	54.19	75.00	41°23'55"	28.34	N17°00'50"W	53.02
C41	69.29	125.00	31°45'45"	35.56	S21°49'55"E	68.41
C42	18.66	75.00	14°15'23"	9.38	N13°04'44"W	18.61
C43	50.51	75.00	38°33'02"	26.25	N39°29'57"W	49.56
C44	39.50	125.00	18°06'12"	19.91	S49°44'22"E	39.33
C45	115.59	125.00	52°59'03"	62.30	S14°11'45"E	111.52
C46	15.80	75.00	12°04'08"	7.93	N06°15'43"E	15.77
C47	226.89	250.00	52°00'00"	121.93	N00°23'56"W	219.19
C48	94.74	300.00	18°06'38"	47.77	N34°38'53"E	94.35
C49	75.66	125.00	34°40'51"	39.03	S28°21'16"W	74.51



### UTILITIES NOTES

- LOTS 1, 3, 4, 6 AND 8 ARE SUBJECT TO STORM DRAINAGE RUNOFF OVERFLOW. ALL MODIFICATIONS TO EXISTING DRAINAGE SHALL BE APPROVED BY THE CITY OF BAKER CITY PRIOR TO BEGINNING MODIFICATIONS.
  - LOT 15 IS SUBJECT TO THE INFREQUENT RELEASE OF WATER DRAINED FROM THE WATER TANKS. AN EASEMENT FOR SUCH RELEASE IS HEREBY DEDICATED.
- ### SURVEYOR'S NARRATIVE
- THE BASIS OF BEARINGS AND COORDINATES ARE BASED OFF AERIAL FLIGHT POINTS "BC 16 AND BC 20" FOR THE MAPPING OF THE CITY OF BAKER IN 1998 BY WALKER & ASSOCIATES.
  - ACCEPTED S1/4, E1/4 & SE SECTION CORNER MONUMENTS SET IN 1976 PER SURVEY DATED JANUARY 3, 1977 FOR R.B. SMITH BY JAMES HANLEY.
  - ACCEPTED C1/4 CORNER MONUMENT SET IN 1981 PER SURVEY FILED MARCH 6, 1981, SURVEY NO. 9-40-42 FOR BILL HEATON BY WILLIAM HANLEY.
  - ACCEPTED CE1/16 CORNER MONUMENT SET IN "1976 PE 2808" BY JAMES HANLEY.
  - ACCEPTED SE1/16 CORNER MONUMENT (FOUND 1/2" PIN IN LEIU OF 5/8" PIN) FITS SURVEY FILED JANUARY 30, 1979 FOR BILL HEATON BY WILLIAM HANLEY.
  - DID NOT FIND CS1/16 CORNER OR S1/16 CORNER COMMON TO SECTIONS 19 & 20. USED CALCULATED POSITIONS BASED ON EVEN SPLIT FROM C1/4 TO S1/4 & E1/4 TO SE SECTION CORNER. FITS SURVEY FILED JANUARY 30, 1979 FOR BILL HEATON BY WILLIAM HANLEY. HELD CALC POSITION FOR CS1/16 CORNER.
  - EAST BOUNDARY-ACCEPTED FOUND MONUMENTS PER SURVEY FILED APRIL 24, 1972, SURVEY NO. 9-40-30 BC. FOR TONY BRANDENTHALER BY JAMES HANLEY.
  - FIELD EQUIPMENT USED TO COMPLETE THIS SURVEY, TRIMBLE GPS 4800 RECEIVER AND TRIMBLE TDSC1 DATA COLLECTOR.

FILED NOVEMBER 12, 2002  
 BAKER COUNTY SURVEYOR  
 SURVEY NO. 9-40-562 SD

**Earl & Associates, Inc.**  
 Surveyors, Engineers & Planners

314 Badiola St. • Caldwell, ID 83605  
 (208) 454-0256  
 (208) 454-0979 Fax  
 AU0501002.DWG 7/26/02  
 SHEET 1 of 2

Document No. B0246 0053  
 Recorded Time: 09:55 A.M.  
 Date: 11-12-02  
*Jamark J. Green* By *Karen Phillips*  
 Baker County, OR., Clerk