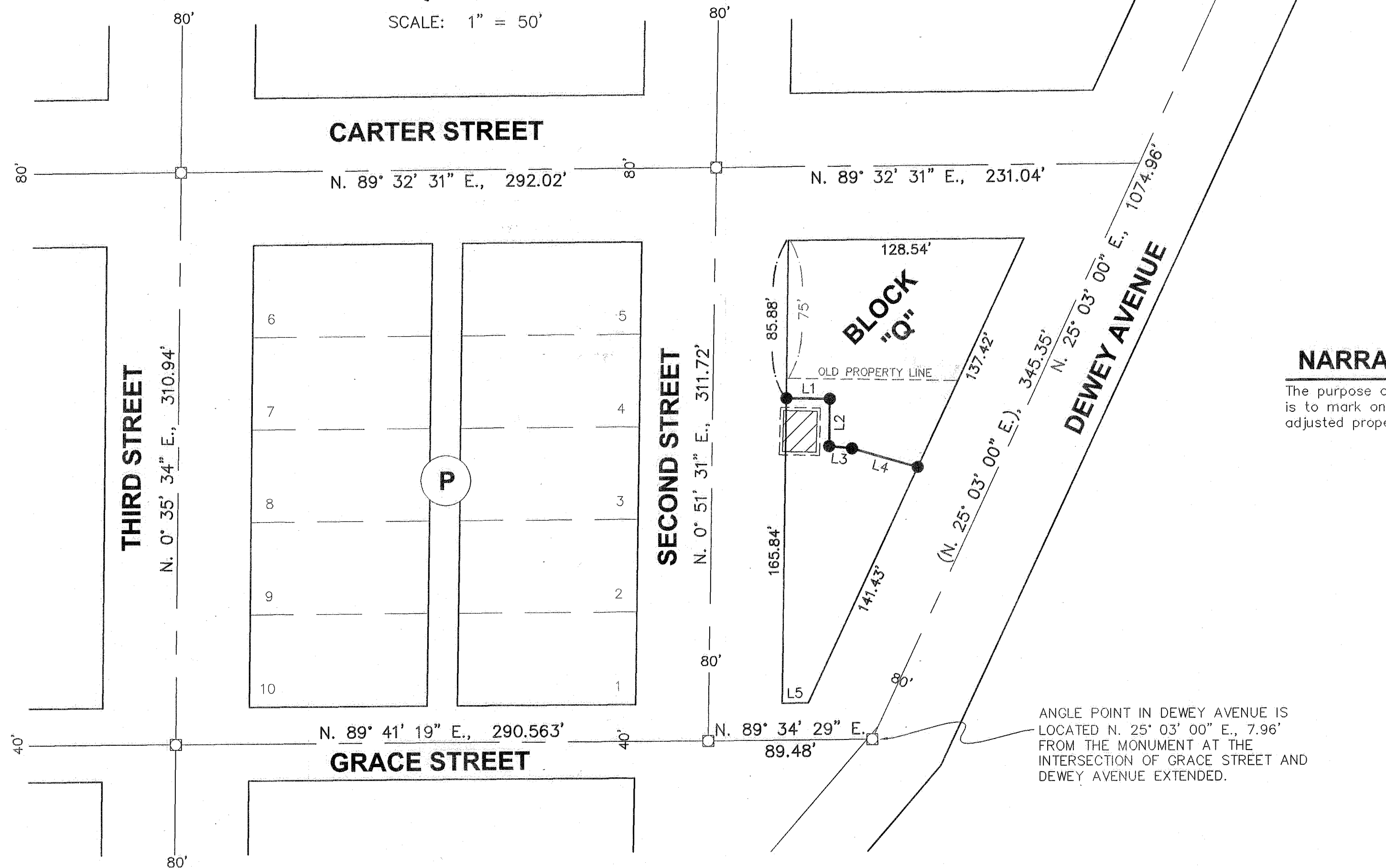


BASIS OF BEARING
DEWEY AVENUE BEARS
S. 25° 03' 00" W. FROM
PLACE ST. TO GRACE ST.

SCALE: 1" = 50'

INTERSECTION OF DEWEY AVENUE
AND PLACE STREET



LINE TABLE

LINE	BEARING	DISTANCE
L1	N. 89°08'29" W.	23.73'
L2	N. 0°51'31" E.	25.75'
L3	N. 84°06'49" W.	12.51'
L4	N. 74°07'07" W.	37.28'
L5	S. 89°34'29" W.	14.24'

NARRATIVE

The purpose of this survey for property line adjustment for Edna Harrell is to mark on the ground with proper monumentation, the corners of the adjusted property line as shown hereon.

REFERENCES

- Plat of M.E. Place's Addition to Baker City, Philo Anderson Survey dated March 1, 1949.
- Baker County Survey No. 9-40-185.
- Baker County Survey No. 9-40-186.
- Baker County Survey No. 9-40-187.

ANGLE POINT IN DEWEY AVENUE IS
LOCATED N. 25° 03' 00" E., 7.96'
FROM THE MONUMENT AT THE
INTERSECTION OF GRACE STREET AND
DEWEY AVENUE EXTENDED.

LEGEND

- Set 5/8" rebar with plastic cap marked "HANLEY ENGR. PLS 1817".
- Found, monument in monument box.
- () Record Data Per Ba. Co. Surv. No. 9-40-186.

HANLEY ENGINEERING, INC.

P.O. BOX 701, 2043 MAIN STREET, BAKER CITY, OREGON 97814 (541) 523-3803

**MAP OF SURVEY
FOR PROPERTY LINE ADJUSTMENT**

**BLOCK "Q", M.E. PLACE'S ADDITION
BAKER CITY, OREGON**

Surveyed December 24, 2001 thru June 11, 2002
for Edna Harrell
Scale: 1" = 50'

REGISTERED
PROFESSIONAL
LAND SURVEYOR

Thomas J. Hanley
OREGON
JULY 13, 1979
THOMAS J. HANLEY
1817

FILED August 7, 2002
BAKER COUNTY SURVEYOR
SURVEY NO. 9-40-556

Renews June 30, 2003