

RECORD OF SURVEY

A PART OF THE NW1/4 OF THE SE1/4 & NE1/4 OF THE SE1/4 SECTION 19,
T. 9 S., R. 40 E., W.M., CITY OF BAKER, BAKER COUNTY, OREGON
2002

LEGEND

- ⊙ FOUND BRASS CAP MONUMENT
- ⊕ FOUND ALUMINUM CAP MONUMENT
- ⊙ SET 5/8 INCH DIA. X 30 INCH IRON PIN
- ⊙ FOUND 5/8 INCH DIA. IRON PIN
- SET 1/2 INCH DIA. X 24 INCH IRON PIN
- FOUND 1/2 INCH DIA. IRON PIN
- FOUND P-K NAIL
- ⊗ FOUND IRON PIPE OR ROD
- △ CALCULATED POINT
- ⊙ FOUND HUB & TACK AERIAL FLIGHT POINT BASED ON 1998, CITY OF BAKER MAP
- X — EXISTING FENCE
- — — PROPERTY BOUNDARY LINE
- () RECORD DATA
- < > RECORD DATA PER DEEDS
- { } RECORD DATA PER SURVEY NO. 9-40-30
- () RECORD DATA PER SURVEY NO. 9-40-34
- [] RECORD DATA PER RECORD OF SURVEY FILED JAN. 30, 1979
- ⊕ EXISTING POWER POLE

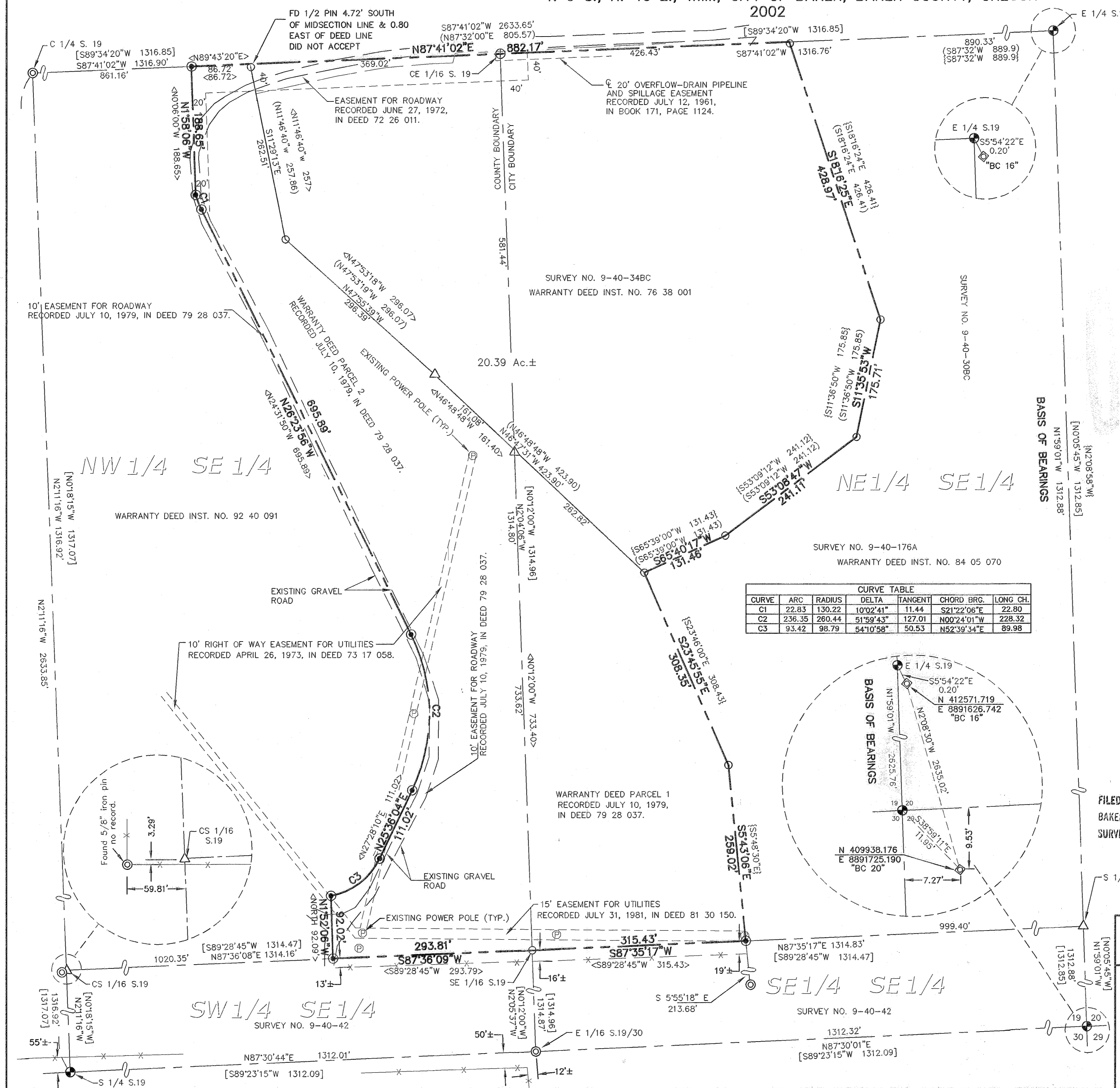
REFERENCE SURVEYS

- FILED JAN. 2 & 3, 1977 AND JAN. 30, 1979
- SURVEY NO. 9-40-22
- SURVEY NO. 9-40-34BC
- SURVEY NO. 9-40-30BC
- SURVEY NO. 9-40-42
- SURVEY NO. 9-40-176A

SURVEYOR'S CERTIFICATE AND NARRATIVE

- 1) THE BASIS OF BEARINGS AND COORDINATES ARE BASED OFF AERIAL FLIGHT POINTS "BC 16 AND BC 20" FOR THE MAPPING OF THE CITY OF BAKER IN 1988 BY WALKER & ASSOCIATES.
- 2) ACCEPTED S1/4, E1/4 & SE SECTION CORNER MONUMENTS SET IN 1976 PER SURVEY DATED JANUARY 3, 1977 FOR R.B. SMITH BY JAMES HANLEY.
- 3) ACCEPTED C1/4 CORNER MONUMENT SET IN 1981 PER SURVEY FILED MARCH 6, 1981, SURVEY NO. 9-40-42 FOR BILL HEATON BY WILLIAM HANLEY.
- 4) ACCEPTED CE1/16 CORNER MONUMENT SET IN "1976 PE 2808" BY JAMES HANLEY.
- 5) ACCEPTED SE1/16 CORNER MONUMENT (FOUND 1/2" PIN IN LEIU OF 5/8" PIN) FITS SURVEY FILED JANUARY 30, 1979 FOR BILL HEATON BY WILLIAM HANLEY.
- 6) DID NOT FIND CS1/16 CORNER OR S1/16 CORNER COMMON TO SECTIONS 19 & 20. USED CALCULATED POSITIONS BASED ON EVEN SPLIT FROM C1/4 TO S1/4 & E1/4 TO SE SECTION CORNER. FITS SURVEY FILED JANUARY 30, 1979 FOR BILL HEATON BY WILLIAM HANLEY. HELD CALC POSITION FOR CS1/16 CORNER.
- 7) EAST BOUNDARY—ACCEPTED FOUND MONUMENTS PER SURVEY FILED APRIL 24, 1972, SURVEY NO. 9-40-30 BC. FOR TONY BRANDENTHALER BY JAMES HANLEY.
- 8) FIELD EQUIPMENT USED TO PERFORM THIS SURVEY, TRIMBLE GPS 4800 RECEIVER AND TRIMBLE TDSC1 DATA COLLECTOR.

CURVE TABLE						
CURVE	ARC	RADIUS	DELTA	TANGENT	CHORD BRG.	LONG CH.
C1	22.83	130.22	10°02'41"	11.44	S21°22'06"E	22.80
C2	236.35	260.44	51°59'43"	127.01	N00°24'01"W	228.32
C3	93.42	98.79	54°10'58"	50.53	N52°39'34"E	89.98



FILED 7/17/02
BAKER COUNTY SURVEYOR
SURVEY NO. 9-40-554

REGISTERED
PROFESSIONAL
LAND SURVEYOR
[Signature]
JUL 13, 1999
ERNEST L. EARL
1810

LICENSE EXPIRES 12/31/03

INDEX NO. 9402-19-2-0-0-00-00

SURVEY FOR:
STEVE JONES

Earl & Associates, Inc.
Surveyors, Engineers & Planners
314 Badiola St. • Caldwell, ID
(208) 454-0256
(208) 454-0979 Fax

JOB NO. AP0601	DWG NO. AP0601ROS
SCALE: 1"=100'	REV. △
FIELD BOOK NO.	BOOK 122
DRAWN BY: DATE:	
bek	7-08-02