

NE 1/4 SEC. 20, NW 1/4 SEC. 21, T 9 S, R 40 E, W. M.

18
FND. 16mm (5/8") IRON ROD IN MONUMENT BOX, ACCEPT FOR INTERSECTION OF 1ST ST. AND ESTES ST.
N 126418.461
E 2711659.512

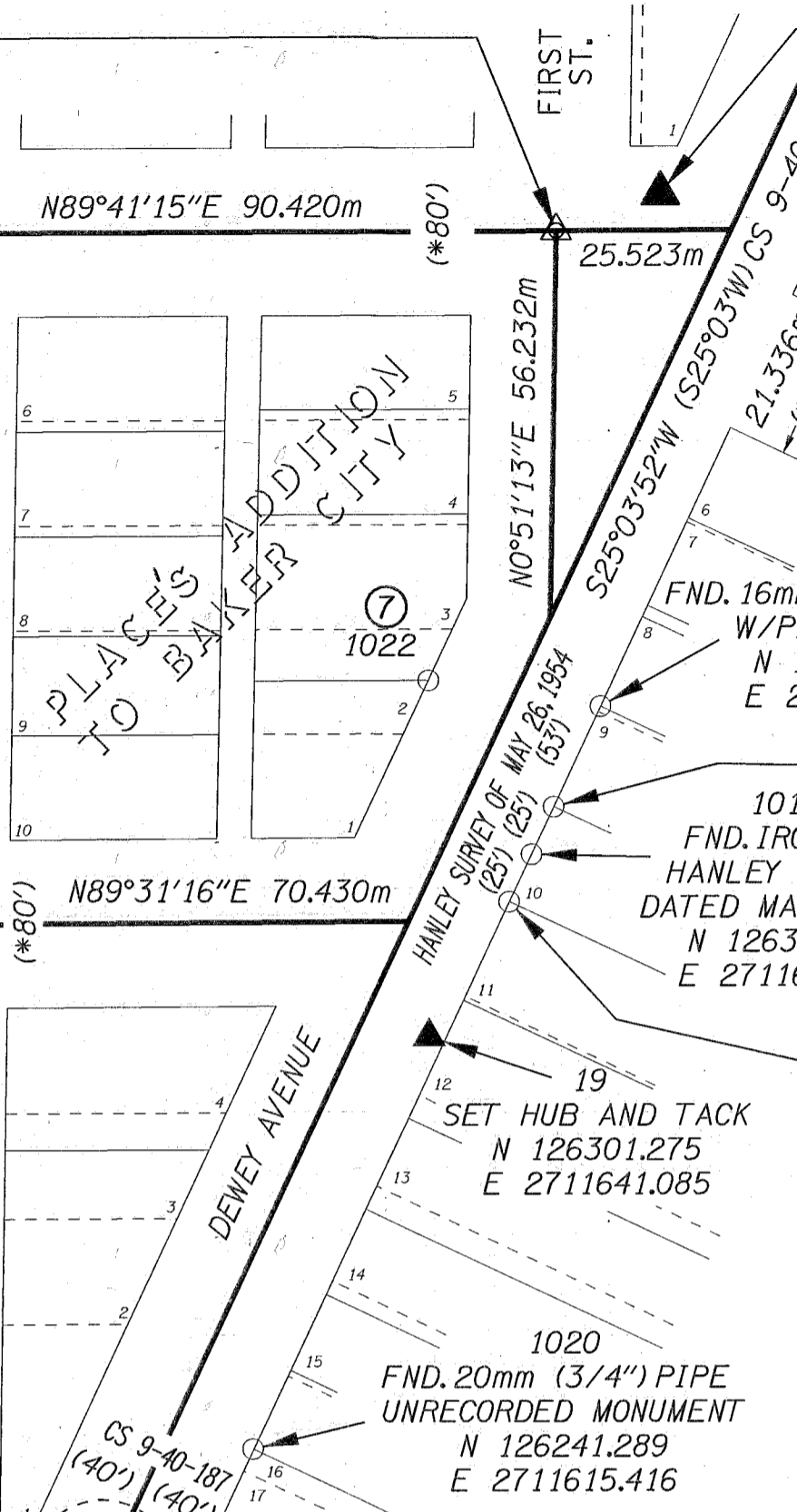
1002
FND. 13mm (1/2") IRON ROD IN MONUMENT BOX, CS 9-40-14 BC ACCEPT FOR INTERSECTION OF 2ND ST. AND ESTES ST.
N 126417.968
E 2711569.093

20
FND. 16mm (5/8") IRON ROD IN MONUMENT BOX, CS 9-40-14 BC, ACCEPT AS INTERSECTION OF 2ND ST. AND CARTER ST.
N 126317.433
E 2711567.569

1004
FND. 25mm (1") IRON PIPE IN CITY MONUMENT BOX, ACCEPT AS INTERSECTION OF 3RD ST. AND GRACE ST., DRG. FOR LDS, JULY 23-34, 1940 P. ANDERSON SURVEY, MAR 1, 1949
N 126221.978
E 2711477.561

GRACE ST.
N 89°42'27"E 88.560m
(**290.60') [*290.61']

THIRD ST.
N 89°42'27"E 88.560m
PLACES 2ND ADDT
SECOND ADDITION
STODDARD'S ADDITION
CORNER OF LOT 9 OF GRIER'S ADDITION SET AT 450' FROM NORTHWESTERLY CORNER OF LOT 1 OF GRIER'S ADDITION
STODDARD'S ADDITION TO THE CITY OF BAKER



13
SET 'PK' NAIL
N 126423.901
E 2711674.715

1021
FND. 12mm (1/2") REBAR UNRECORDED MONUMENT
N 126374.110
E 2711768.034

1013
FND. 16mm (5/8") REBAR W/PLASTIC CAP
N 126349.307
E 2711666.056

1012
FND. 16mm (5/8") REBAR HANLEY SURVEY DATED MAY 26, 1954
N 126334.715
E 2711659.235

1011
FND. IRON ROD HANLEY SURVEY DATED MAY 26, 1954
N 126327.817
E 2711656.008

1010
FND. 16mm (5/8") IRON ROD HANLEY SURVEY DATED MAY 26, 1954
N 126320.911
E 2711652.759

1020
FND. 20mm (3/4") PIPE UNRECORDED MONUMENT
N 126241.289
E 2711615.416

LEGEND

- (*) M.E. PLACE'S ADDITION
- () OSHD DRG. 6B-2-21 OR AS NOTED
- [] OSHD DRG. 3B-22-23
- [*] P. ANDERSON SURVEY, MAR. 1, 1949
- (**) DRG. FOR LDS CHURCH, JULY 23-24, 1940
- ▲ SET NETWORK POINT
- △ FOUND MONUMENT USED AS NETWORK POINT
- FOUND MONUMENT AS NOTED
- RETRACED CENTERLINE
- R/W OR PROPERTY BOUNDARY

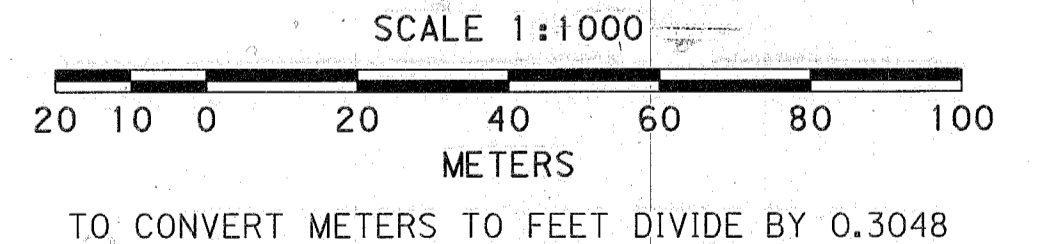
0+159.457 P.I.
N 126439.930
E 2711992.093

0+210.868 P.T.
[6+92.6 P.T.]

NOTES

- ① PT. 21: FND. IRON ROD IN MONUMENT BOX, ACCEPT AS INTERSECTION OF 2ND ST. AND GRACE ST. PT. 21 TO PT. 1009: N89°34'24"E 27.266m (**86.11') N 126222.430 E 2711566.120
- ② PT 22: SET 'PK' NAIL
N 126200.003
E 2711564.027
- ③ PT. 1009: FND. 16mm (5/8") IRON ROD IN CITY MONUMENT BOX, ACCEPT AS INTERSECTION OF GRACE ST. AND DEWEY ST.
N 126222.633
E 2711593.385
- ④ PT. 11: SET 'PK' NAIL
N 126202.318
E 2712000.884
- ⑤ STODDARD'S ADDITION; PHILO ANDERSON SURVEY DATED MAR. 1, 1949
- ⑥ PT. 12: FND. 12mm (1/2") IRON ROD IN MONUMENT BOX, ACCEPT AS POINT FOR CENTERLINE ELM STREET, CS 9-40-99 BC CS 9-40-341 MP
N 126425.681
E 2711991.953
- ⑦ PT. 1022: FND. STEEL PIPE, UNRECORDED
N 126353.074
E 2711640.949

REGISTERED PROFESSIONAL LAND SURVEYOR
Robert E. Butler
OREGON
JULY 25, 1995
ROBERT E. BUTLER
2733
EXPIRES DECEMBER 31, 2003



OREGON DEPARTMENT OF TRANSPORTATION
HORIZONTAL CONTROL, RECOVERY AND RETRACEMENT MAP
OF THE DEWEY AVENUE (BAKER CITY) SECTION
OF THE WHITNEY AND LA GRANDE - BAKER CITY HIGHWAYS
JAN. 29, 2001 TO AUG 30, 2001 FOR ODOT REGION 5
3012 ISLAND AVENUE, LA GRANDE, OREGON, 97850
RETRACED CENTERLINE, FOUND MONUMENTS SHEET 4 OF 5