

NE 1/4 SEC. 20, NW 1/4 SEC. 21, T 9 S, R 40 E, W. M.

REGISTERED
PROFESSIONAL
LAND SURVEYOR

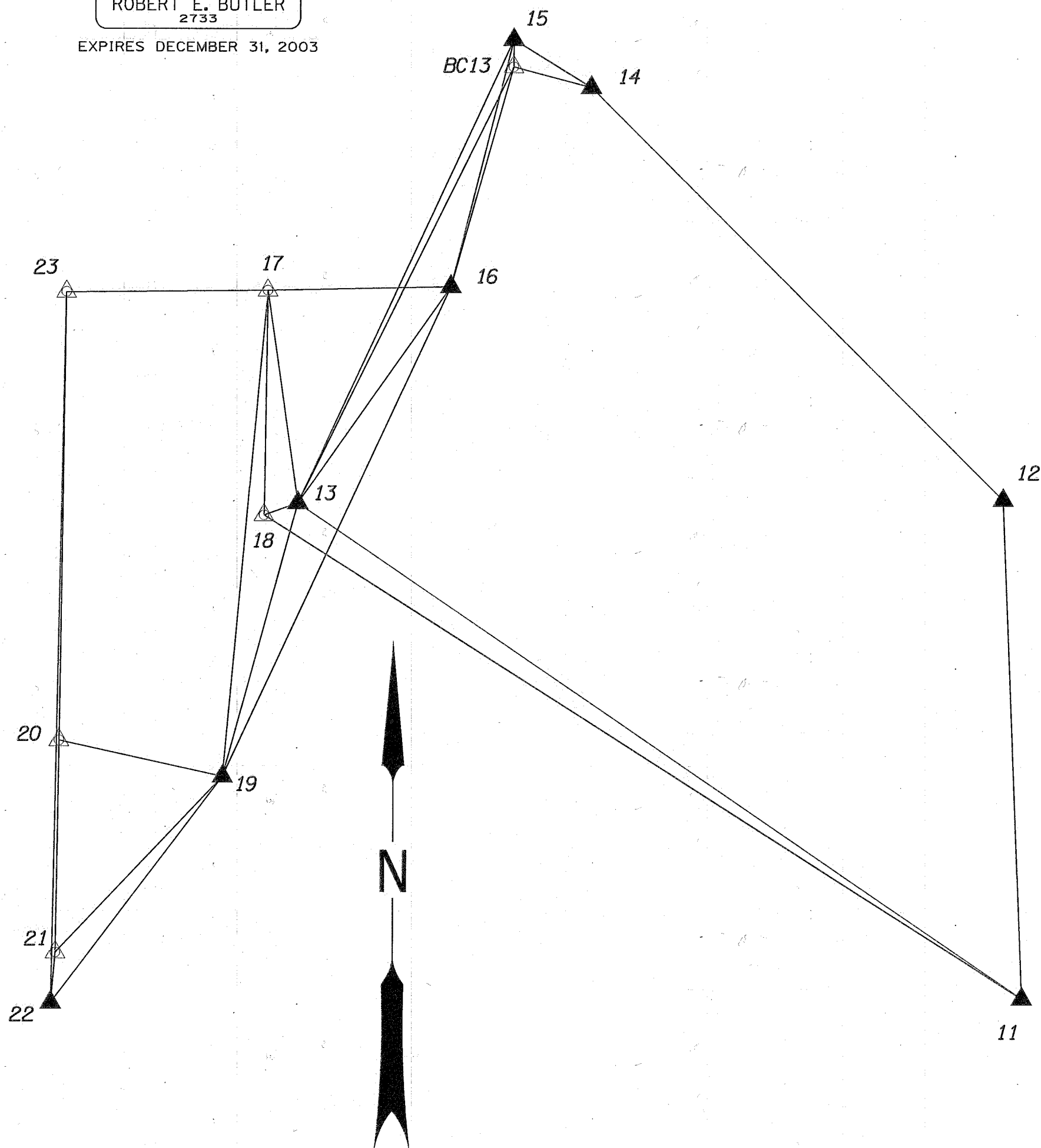
Robert E. Butler

OREGON
JULY 25, 1995
ROBERT E. BUTLER
2733

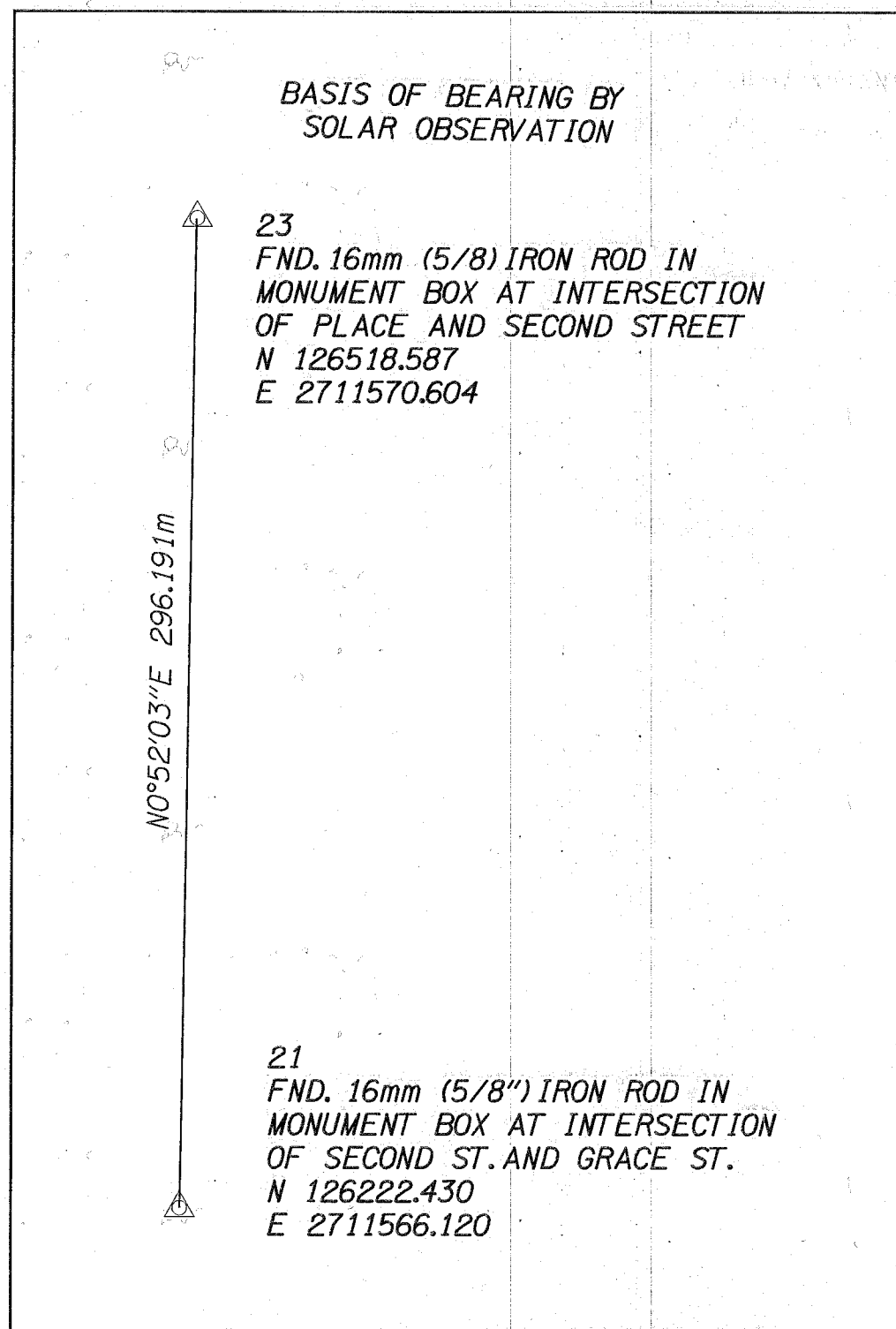
EXPIRES DECEMBER 31, 2003

REFERENCES

- M.E. PLACE'S ADDITION TO BAKER CITY, MARCH 23, 1872
- PLACES SECOND ADDITION TO BAKER CITY
- GRIER'S ADDITION TO BAKER CITY
- STODDARD'S ADDITION, CITY OF BAKER - MAY 8, 1941
- BAKER CITY ORDINANCE 945 - BOOK 168, PAGE 586
- BAKER CITY ORDINANCE 1077 - OCTOBER 15, 1906
- BAKER CITY ORDINANCE 2166 - BOOK 129, PAGE 245, 246
- BAKER CITY ORDINANCE 2170 - NOVEMBER 25, 1940,
- BAKER CITY ORDINANCE 2590 - AUGUST 9, 1965
- OREGON STATE HIGHWAY DEPARTMENT DRAWING 3B-22-23
- OREGON STATE HIGHWAY DEPARTMENT DRAWING 6B-2-21
- OREGON STATE HIGHWAY DEPARTMENT R/W FILE 9846
- SURVEY FOR LDS CHURCH - JULY 23, 24, 1940
- PHILO ANDERSON SURVEY - MARCH 1, 1949
- JAMES D. HANLEY SURVEY - MAY 26, 1954
- BAKER COUNTY SURVEY 9-40-14 BC
- BAKER COUNTY SURVEY 9-40-99 BC
- BAKER COUNTY SURVEY 9-40-136 BC
- BAKER COUNTY SURVEY 9-40-186
- BAKER COUNTY SURVEY 9-40-187
- BAKER COUNTY SURVEY 9-40-293
- BAKER COUNTY SURVEY 9-40-357
- BAKER COUNTY SURVEY 9-40-438
- BAKER COUNTY SURVEY 9-40-494
- BAKER COUNTY SURVEY 9-40-495



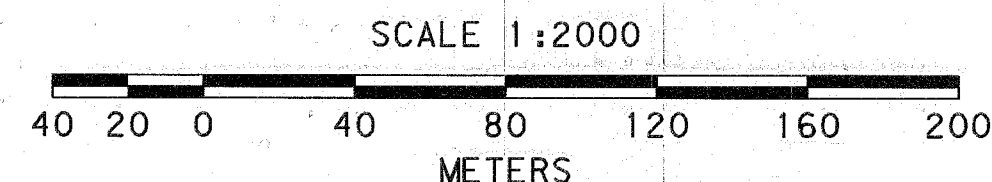
- ▲ SET NETWORK POINT
- △ FOUND MONUMENT USED AS NETWORK POINT
- LINES OF OBSERVATION



6/11/02
WELL STATIONS
IT'S POSITION W
SURVEY 9-40-550

NETWORK COORDINATES (ASSUMED)

POINT	EASTING	NORTHING	DESCRIPTION
11	2712000.884	126202.318	SET 'PK.' NAIL
12	2711991.953	126425.681	FND. 12mm (1/2") IRON ROD IN MONUMENT BOX, CS 9-40-341 MP, 9-40-99 BC, 9-40-357
13	2711674.715	126423.901	SET 'PK.' NAIL
14	2711806.198	126610.295	SET 'PK.' NAIL
15	2711771.293	126631.702	SET 'PK.' NAIL
BC13	2711771.227	126619.517	FND. 16mm (5/8") IRON ROD W/PLASTIC CAP IN MON. BOX FOR SEC. COR. 17, 16, 20, 21; CS 9-40-136, 9-40-293
16	2711743.313	126520.906	SET HUB AND TACK
17	2711661.011	126519.099	FND. 16mm (5/8") IRON ROD IN CITY MONUMENT BOX, NOT RECORDED WITH COUNTY SURVEYS
18	2711659.512	126418.461	FND. 16mm (5/8") IRON ROD IN CITY MONUMENT BOX, NOT RECORDED WITH COUNTY SURVEYS
19	2711641.085	126301.275	SET HUB AND TACK
20	2711567.569	126317.433	FND. 16mm (5/8") IRON ROD IN CITY MONUMENT BOX, CS 9-40-14 BC, MONUMENT NOT DESCRIBED ON PLAT
21	2711566.120	126222.430	FND. 16mm (5/8") IRON ROD IN CITY MONUMENT BOX, NOT RECORDED WITH COUNTY SURVEYS
22	2711564.027	126200.003	SET 'PK.' NAIL
23	2711570.604	126518.587	FND. 16mm (5/8") IRON ROD IN CITY MONUMENT BOX, NOT RECORDED WITH COUNTY SURVEYS



TO CONVERT METERS TO FEET DIVIDE BY 0.3048

OREGON DEPARTMENT OF TRANSPORTATION

HORIZONTAL CONTROL, RECOVERY AND RETRACEMENT MAP

OF THE DEWEY AVENUE (BAKER CITY) SECTION

OF THE WHITNEY AND LA GRANDE - BAKER CITY HIGHWAYS

JAN. 29, 2001 TO AUG. 30, 2001 FOR ODOT REGION 5

3012 ISLAND AVENUE, LA GRANDE, OREGON, 97850

NETWORK, REFERENCES, BASIS OF BEARING SHEET 2 OF 5