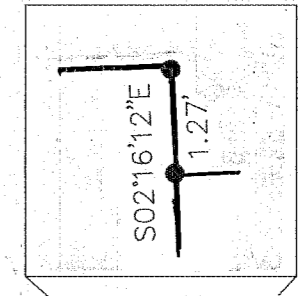


MAP OF SURVEY FOR PROPERTY LINE ADJUSTMENT

BETWEEN LOTS 2 & 3, SUNRISE PLACE
 BAKER CITY, BAKER COUNTY, OREGON
 SW1/4SE1/4 OF SECTION 9, T9S, R40E, WM



NARRATIVE

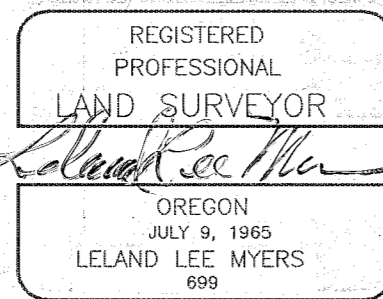
The purpose of this property line adjustment plat is to reconfigure Lots 2 and 3 of Sunrise Place in the SW1/4SE1/4 of Section 9, T9S, R40E, WM, Baker City, Baker County, Oregon, to fit with the way the land has been sold. The plat was made at the request of Jerry Corn.

This is an after the fact adjustment as the Westerly 365 feet of Lot 3 was sold by Deed No. B0032-0119 on August 7, 2000. The Westerly 365 feet of Lot 2 was also sold by Deed No. B0031-0083 dated July 28, 2000. It is intended to partition the adjusted Lot 2 into three parcels in the near future.

Jim Hanley surveyed the subdivision in 1997 and it was recorded in 1998 as Sunrise Place. I found all the monuments to be within acceptable tolerances of the record distance and bearing and this plat shows those records as the property dimensions. I did set two new monuments on the ends of the property adjustment line.

CERTIFICATION

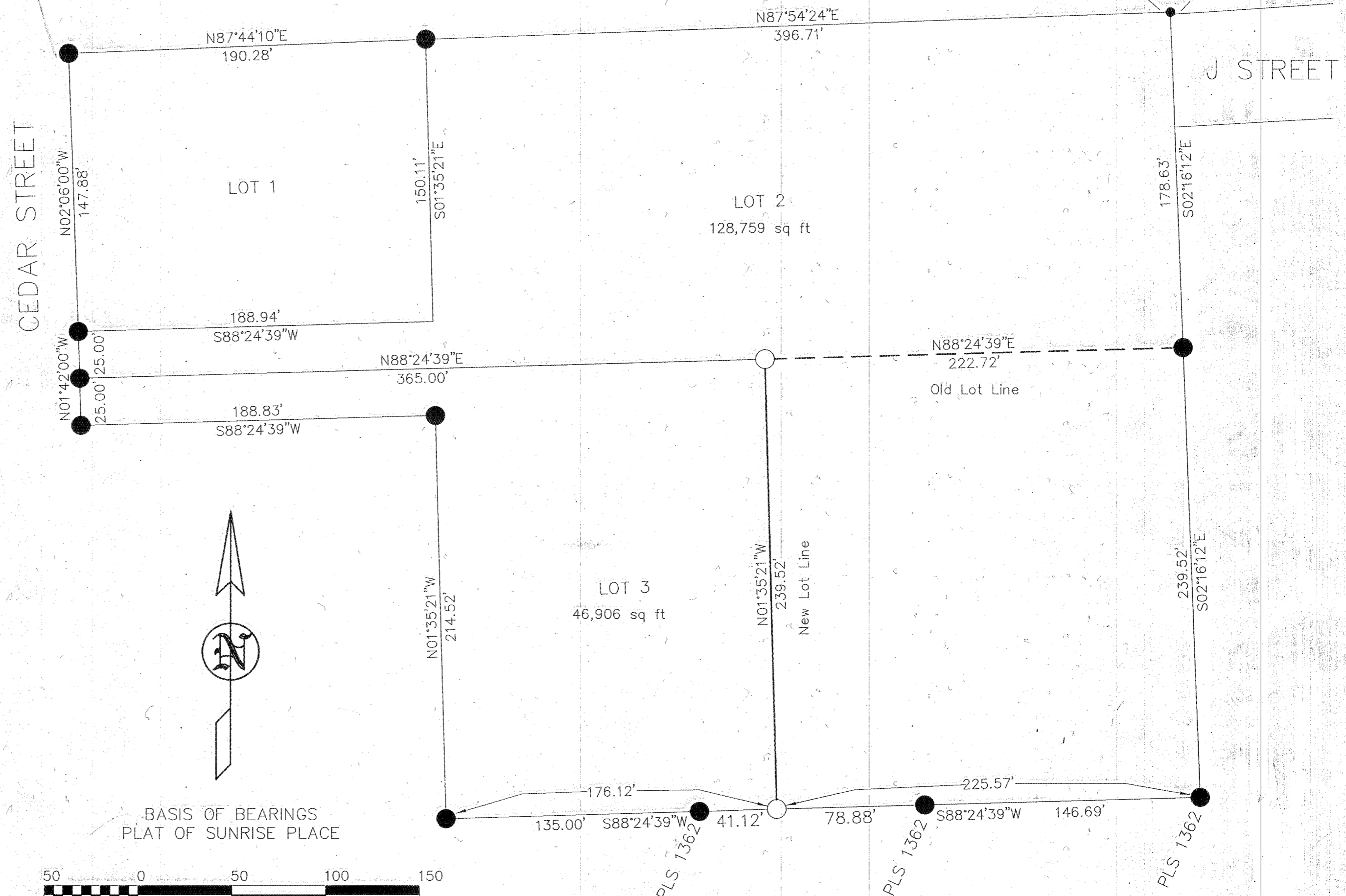
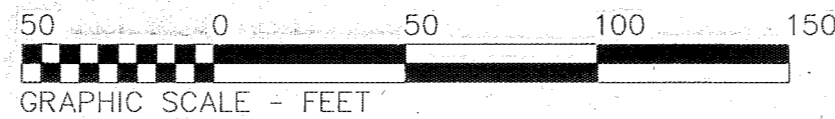
I, Leland Lee Myers, a Professional Land Surveyor registered in the State of Oregon, 587 E Auburn Street, PO Box 99, Sumpter, Oregon 97877, completed this survey on September 4, 2001, by setting the monuments as shown and do hereby certify that the information shown on this plat is in accordance with Baker County regulations and ORS Chapter 92 and is correct to the best of my knowledge.



Renewal Date 1/1/03



BASIS OF BEARINGS
 PLAT OF SUNRISE PLACE



LEGEND

- Found No. 5 Rebars with Yellow Plastic Caps set by PLS 1206 unless otherwise noted
- Set 30" Long No. 5 Rebars with Yellow Plastic Caps marked PLS 699

FILED November 2 2001
 BAKER COUNTY SURVEYOR
 SURVEY No. 9-40-540