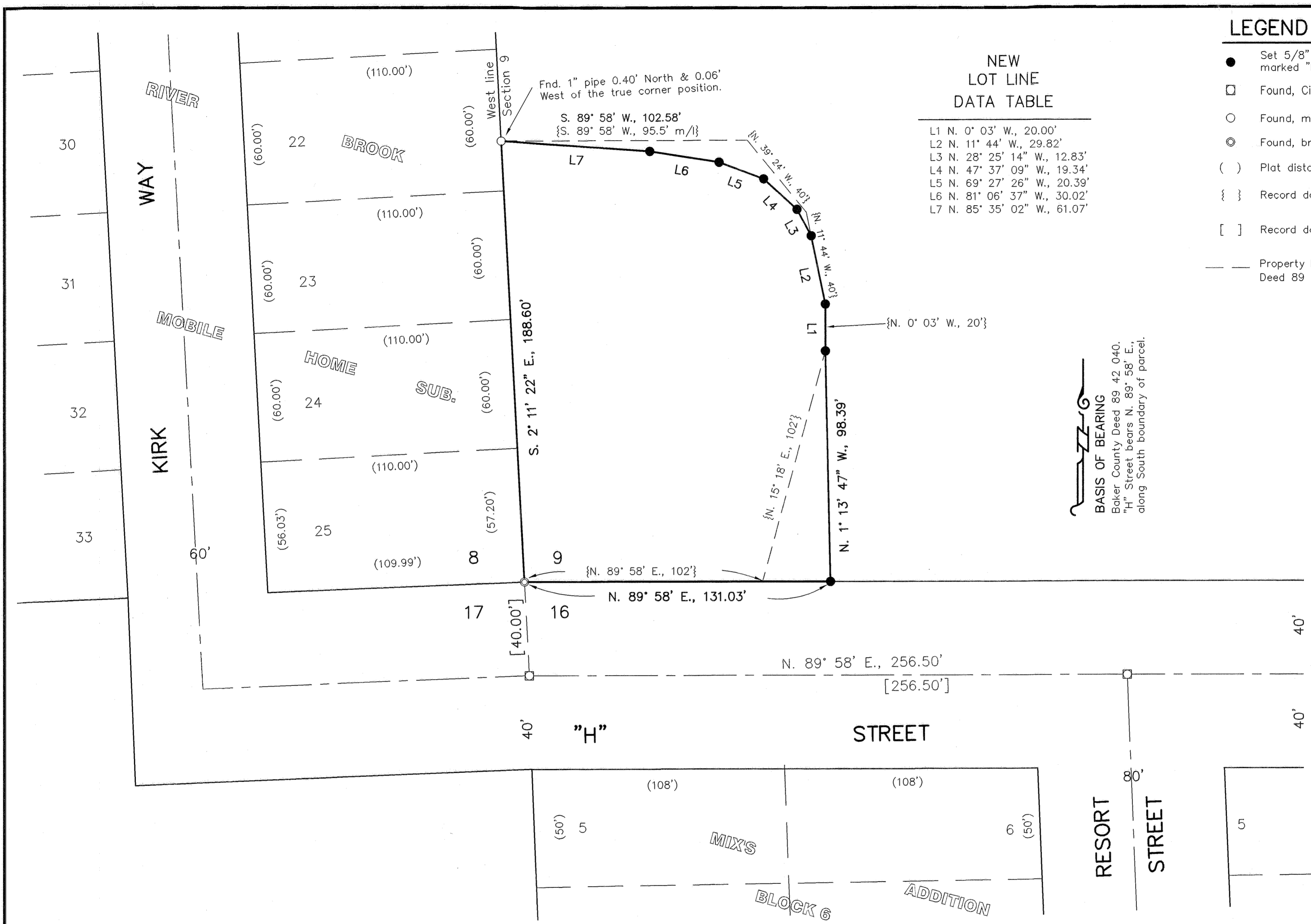


LEGEND

- Set 5/8" rebar with plastic cap marked "HANLEY ENGR. PLS 1817".
- Found, City monument in monument box.
- Found, monument as noted.
- ⊙ Found, brass cap monument for Section corner.
- () Plat distance.
- { } Record data per Baker County Deed 89 42 040.
- [] Record data per Ba. Co. Sur. No. 9-40-515.
- Property boundary per Baker County Deed 89 42 040.

NEW LOT LINE DATA TABLE

L1	N. 0° 03' W., 20.00'
L2	N. 11° 44' W., 29.82'
L3	N. 28° 25' 14" W., 12.83'
L4	N. 47° 37' 09" W., 19.34'
L5	N. 69° 27' 26" W., 20.39'
L6	N. 81° 06' 37" W., 30.02'
L7	N. 85° 35' 02" W., 61.07'



NARRATIVE

The purpose of this survey for John Anderson is to adjust the boundaries of his parcel as described in Baker County Deed 89 42 040 to follow closer to existing fence lines. All corners of the adjusted boundary lines are marked with proper monumentation as shown hereon. The bearing for the West line of Section 9 was taken from Baker County Subdivision Plat SD2000-004, and rotated clockwise 0° 50' 49".

**REGISTERED
PROFESSIONAL
LAND SURVEYOR**
Thomas J. Hanley
OREGON
JULY 13, 1979
THOMAS J. HANLEY
1817

Renews June 30, 2001

HANLEY ENGINEERING, INC.

P.O. BOX 701, 2043 MAIN STREET, BAKER CITY, OREGON 97814 (541) 523-3803

MAP OF SURVEY

IN THE SW¼ SW¼ OF SECTION 9,
T. 9 S., R. 40 E., W.M.
BAKER CITY, OREGON

Surveyed May 4 THRU 23, 2001
for John Anderson
Scale: 1" = 30'

FILED JUNE 22, 2001
BAKER COUNTY SURVEYOR
SURVEY NO. 9-40-536