

**BASIS OF BEARING**  
 O.S.H.D. DRAWING NO. 9B-1-26  
 HIGHWAY BEARS S. 32° 00' 30" E.  
 BETWEEN STA. 2254+00.94 P.T.  
 AND STA. 2266+18.78 P.O.T. Bk

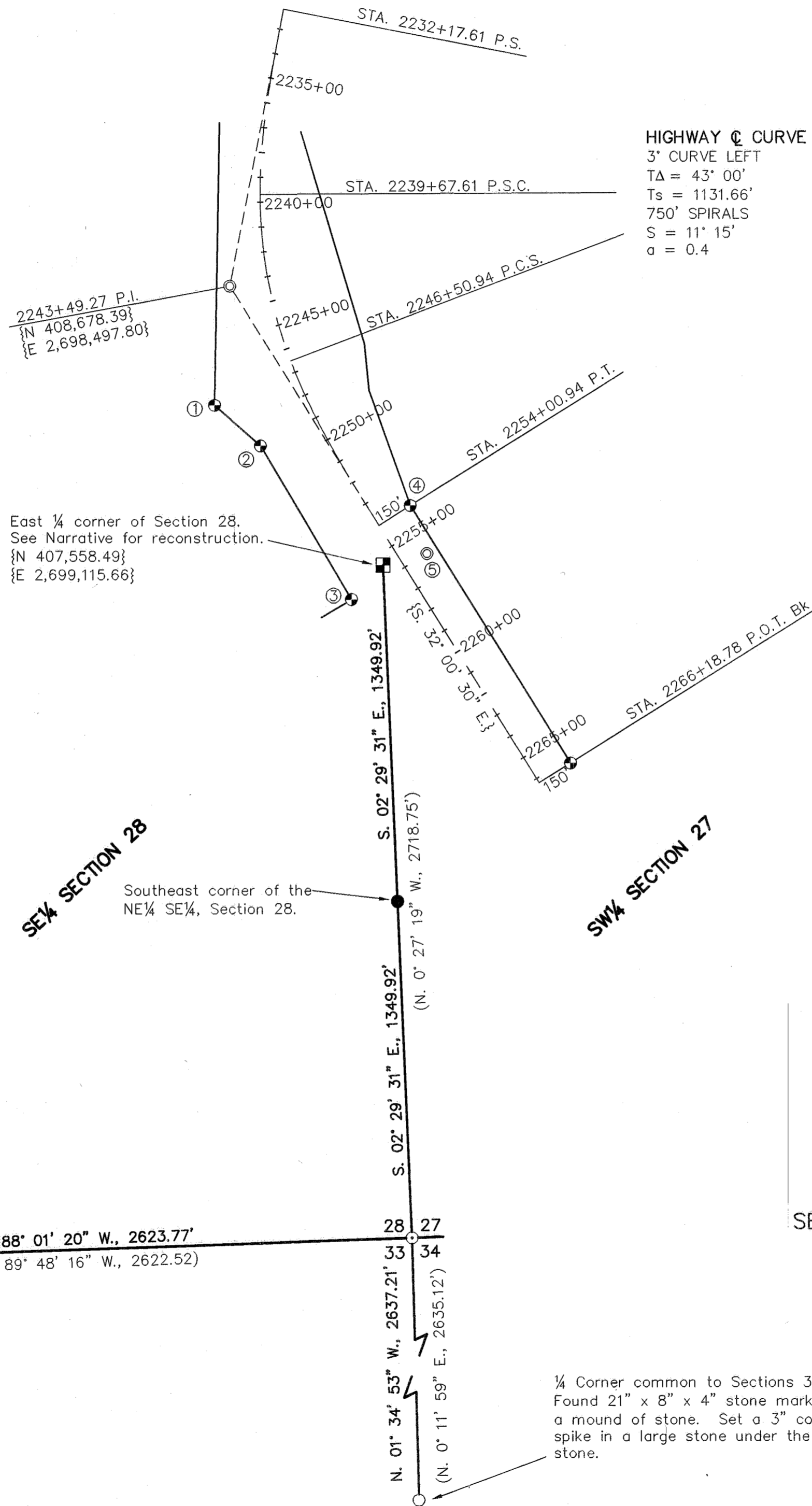
SCALE: 1" = 400'

**LEGEND**

- Set 5/8" rebar with plastic cap marked "HANLEY ENGR. PLS 1817".
- Found, 5/8" rebar with plastic cap marked "LS 645".
- Found, monument as noted.
- ⊙ Found, O.S.H.D. Brass Cap Monument.
- ⊕ Found, O.S.H.D. R/W marker, 5/8 pin with aluminum cap.
- ⊠ 1/4 Corner location as reestablished from O.S.H.D. monument ties. Not monumented this survey. See Narrative.
- ( ) Record Data per Ba. Co. Sur. No. 9-40-37.
- { } Record Data per O.S.H.D. Drawing No. 9B-1-26.

**HIGHWAY CURVE DATA**

3' CURVE LEFT  
 TA = 43° 00'  
 Ts = 1131.66'  
 750' SPIRALS  
 S = 11' 15"  
 a = 0.4



**NARRATIVE**

The purpose of this survey for Charles Swinyer is to mark upon the ground with proper monumentation the Southeast corner of the Northeast quarter of the Southeast quarter of Section 28. Said corner is on the South boundary line of the Swinyer property. The 3/4" iron pipe (as stated on O.S.H.D. Drawing No. 9B-1-26) monumenting the quarter corner common to Sections 27 & 28 was evidently destroyed during the construction of the Interstate. It's position was reestablished (not monumented) as follows:  
 Ties were made to numerous O.S.H.D. monuments as shown hereon. The coordinate (as stated on said O.S.H.D. Drawing) for the monument at the P.I. (Station 2243+49.27) was held, and the bearing (S. 32° 00' 30" E. as stated on said O.S.H.D. Drawing) between the monument at Station 2254+00.94 P.T. 150' L and the monument at Station 2266+18.78 P.O.T. Bk 150' L was held. The quarter corner position was then reestablished at the coordinates stated on said O.S.H.D. Drawing.  
 The 5/8" rebar with plastic cap set by Baker County Survey No. 9-40-37 (Hambleton survey) for the section corner common to Sections 27, 28, 33, and 34 was found and tied to. The distance stated on the Hambleton survey between the said section corner and the said quarter corner is in conflict with our distance by 18.91 feet. To make sure that we had the correct monument for the section corner we tied to the quarter corner common to Sections 28 and 33, and the quarter corner common to Sections 33 and 34. These checked very good with the Hambleton survey, we therefore accepted the 5/8" rebar for the section corner common to Sections 27, 28, 33, and 34.

**MONUMENT NOTES**

- ① STATION 2247+00.00 P.O.C. 350' R - Monument is 3.64' North & 1.08' West of true corner position.
- ② STATION 2249+00.00 P.O.S. 250' R - Monument is 22.70' North & 9.99' West of true corner position.
- ③ STATION 2256+00.00 P.O.T. 250' R - Monument is 4.13' North & 2.66' West of true corner position.
- ④ STATION 2254+00.94 P.T. 150' L
- ⑤ STATION 2256+00.00 P.O.T. 104.95' R

**QUARTER CORNER REFERENCES**

- ③ Monument bears S. 42° 53' 49" W., 186.85' from the calculated 1/4 corner position.
- ④ Monument bears N. 24° 28' 59" E., 263.41' from the calculated 1/4 corner position.
- ⑤ Monument bears N. 75° 04' 43" E., 182.58' from the calculated 1/4 corner position.

**REFERENCES**

Baker County Survey No. 9-40-33B.  
 Baker County Survey No. 9-40-37.  
 Baker County Survey No. 9-40-54.  
 O.S.H.D. Drawing No. 9B-1-26.

**MAP OF SURVEY**  
 SECTION 27, 28, 33, & 34, T. 9 S., R. 40 E., W.M.  
 BAKER COUNTY, OREGON

Surveyed May 4 thru June 6, 2001  
 for Charles Swinyer  
 Scale: 1" = 400'

South 1/4 Corner of Section 28  
 Found 12" x 10" x 4" stone  
 located in small mound of stone  
 in an East-West running fence  
 line. Set 12" spike under stone.

1/4 Corner common to Sections 33 & 34.  
 Found 21" x 8" x 4" stone marked 1/4 in  
 a mound of stone. Set a 3" cotton gin  
 spike in a large stone under the marked  
 stone.

HANLEY ENGINEERING, INC.  
 2043 MAIN STREET  
 BAKER CITY, OREGON

**REGISTERED  
 PROFESSIONAL  
 LAND SURVEYOR**  
*Thomas J. Hanley*  
**OREGON**  
 JULY 13, 1979  
**THOMAS J. HANLEY**  
 1817

Renews June 30, 2001

FILED JUNE 15 2001  
 BAKER COUNTY SURVEYOR  
 SURVEY NO. 9-40-535