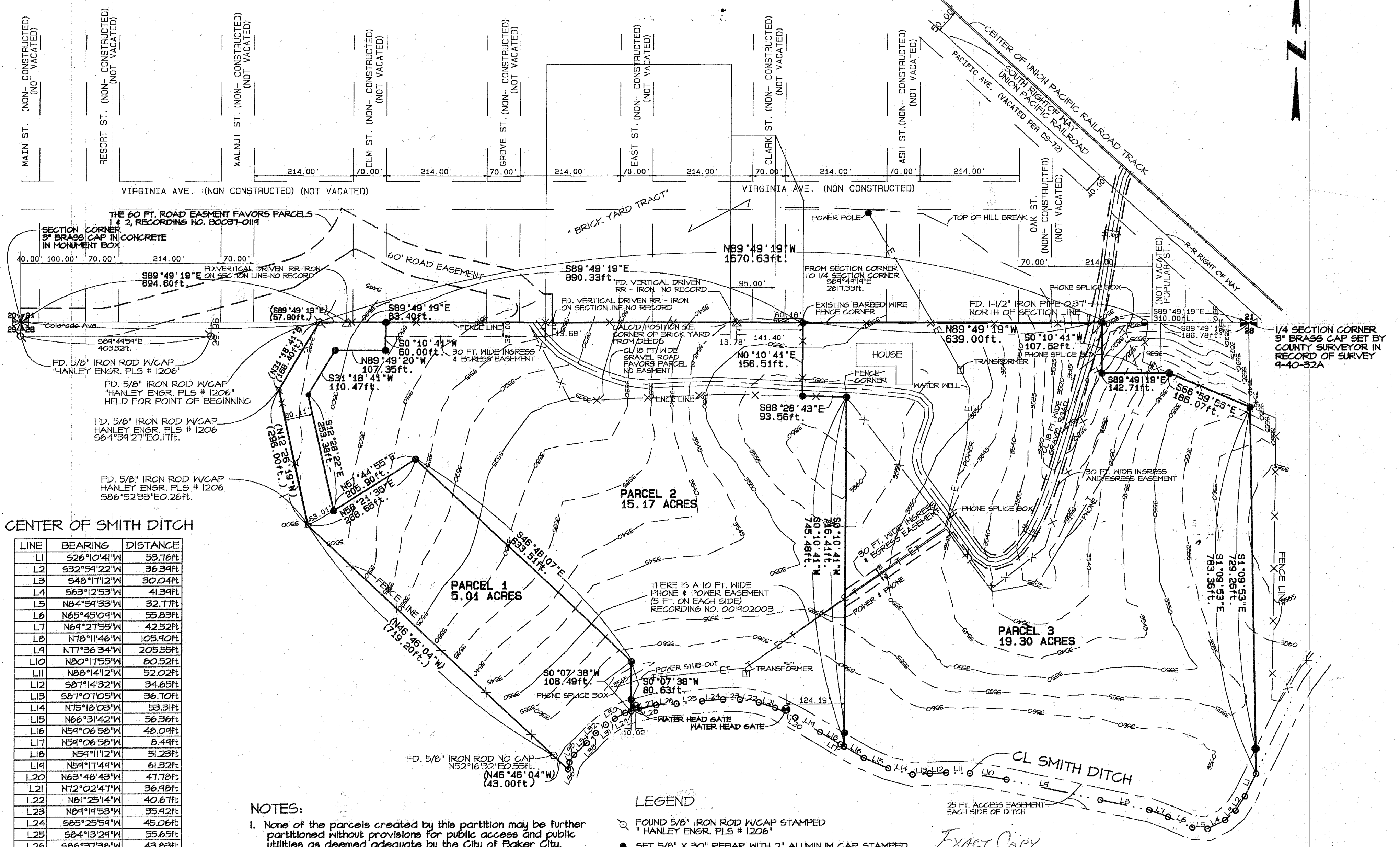


PARTITION PLAT NO. P2001 - 008

NW 1/2, NW 1/4 OF SECTION 28, TOWNSHIP 9 SOUTH, RANGE 40 EAST,
WILLAMETTE MERIDIAN, IN BAKER CITY, BAKER COUNTY, OREGON.



CENTER OF SMITH DITCH

LINE	BEARING	DISTANCE
L1	S26°10'41"W	53.76ft
L2	S32°54'22"W	36.34ft
L3	S48°17'12"W	30.04ft
L4	S63°12'53"W	41.34ft
L5	N84°54'33"W	32.77ft
L6	N65°45'04"W	55.83ft
L7	N69°27'55"W	42.52ft
L8	N78°11'46"W	105.90ft
L9	N77°36'34"W	205.55ft
L10	N80°17'55"W	80.52ft
L11	N88°14'12"W	52.02ft
L12	S87°14'32"W	34.65ft
L13	S87°07'05"W	36.70ft
L14	N75°18'03"W	53.31ft
L15	N66°31'42"W	56.36ft
L16	N59°06'58"W	48.09ft
L17	N59°06'58"W	8.44ft
L18	N59°11'12"W	51.23ft
L19	N59°17'49"W	61.32ft
L20	N63°48'43"W	47.78ft
L21	N72°02'47"W	36.98ft
L22	N81°25'14"W	40.67ft
L23	N89°19'53"W	35.92ft
L24	S85°25'59"W	45.06ft
L25	S84°13'29"W	55.65ft
L26	S86°37'38"W	43.83ft
L27	S75°52'41"W	36.58ft
L28	S75°19'36"W	18.43ft
L29	S75°19'36"W	12.80ft
L30	S62°02'37"W	25.93ft
L31	S57°12'39"W	23.71ft
L32	S49°37'39"W	27.85ft
L33	S42°43'53"W	28.38ft
L34	S47°30'31"W	36.80ft
L35	S30°20'22"W	18.14ft
L36	S12°01'57"W	15.55ft

NOTES:

- None of the parcels created by this partition may be further partitioned without provisions for public access and public utilities as deemed adequate by the City of Baker City.
- Contours are based on an assumed datum.

LEGEND

- FOUND 5/8" IRON ROD W/CAP STAMPED "HANLEY ENGR. PLS # 1206"
- SET 5/8" X 30" REBAR WITH 2" ALUMINUM CAP STAMPED "ROUSE SURVEYING, INC. PLS. 2149"
- FOUND 1-1/2" IRON PIPE
- () RECORD BEARINGS AND DISTANCES
- △ FOUND VERTICAL RAILROAD IRON IN GROUND
- FOUND 5/8" IRON ROD NO CAP
- CL. DITCH-LINE SEGMENT END POINT

FILED JUNE 11 2001
 BAKER COUNTY SURVEYOR
 SURVEY NO. 9-40-534 MP

SCALE: 1" = 140'

Exact Copy

REGISTERED PROFESSIONAL LAND SURVEYOR

OREGON
 JANUARY 21, 1997
 TIMOTHY P. ROUSE
 2799

Renewal 12/31/2002

REVISION #1 5/23/01

SURVEYED
 11/17-18 & 12/07/00
 502-503/2001

PARTITION PLAT FOR
 JEFFERY D. & CAROL J. PETRY

ROUSE SURVEYING, INC.

10416 N.E. 67TH ST.
 VANCOUVER, WA. 98662

PH. 360-253-8234 FAX. 360-253-4309