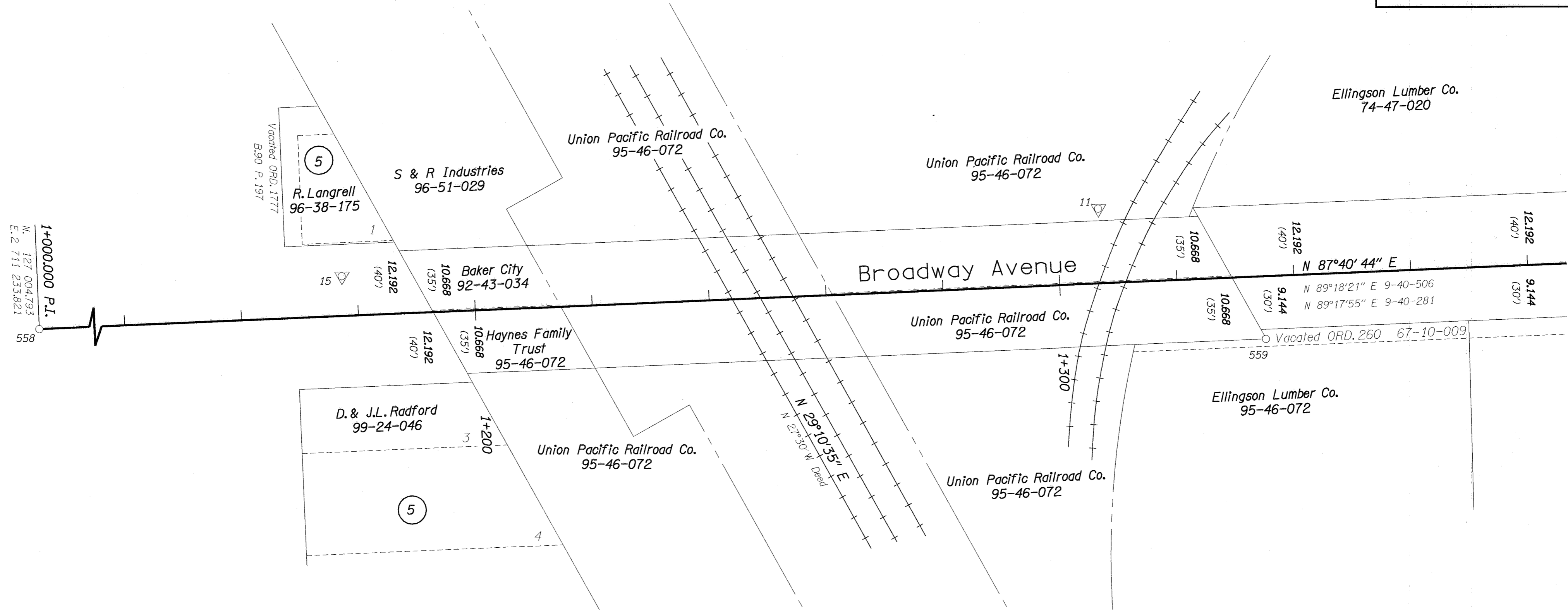


RECORD OF SURVEY  
S.W. ¼ SEC. 17, T.9S., R.40E., W.M.  
BAKER COUNTY, OREGON



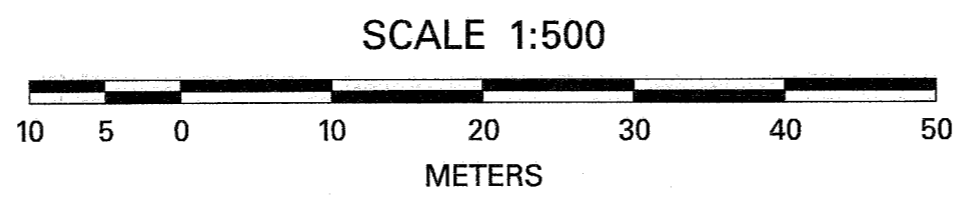
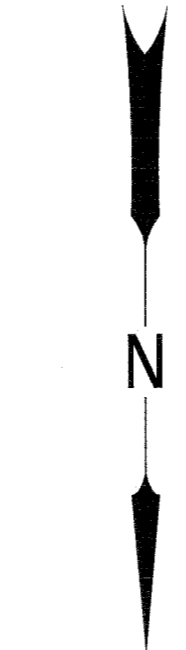
MATCH SHEET 4

1+000,000 P.L.  
N. 127 004793  
E. 2 711 233821  
558

JOHN STEWART'S  
ADDITION

REGISTERED  
PROFESSIONAL  
LAND SURVEYOR  
*M.S.*  
OREGON  
JULY 13, 1999  
MICHAEL S. SWANSON  
\*56296  
RENEWAL DATE: JUNE 30, 2002  
SIGNED: *3-16-2001*

LEGEND	
○	MONUMENT FOUND AS NOTED IN TABLE.
△	PROJECT CONTROL POINT FOUND OR SET AS NOTED IN TABLE.
□	CALCULATED POSITION
N 70°46'22"E	MEASURED INFORMATION
N 69°01'30" E	RECORD INFORMATION



	<b>CONSULTING ENGINEERS</b> 920 COUNTRY CLUB RD., SUITE 100B EUGENE, OREGON 97401 TEL. (541) 683-6090 FAX. (541) 683-6576
	CENTER LINE RESOLUTION, MONUMENT RECOVERY AND CONTROL SURVEY <b>BROADWAY AVENUE BICYCLE PATH</b> FOR BAKER CITY, BAKER COUNTY AND OREGON DEPARTMENT OF TRANSPORTATION MARCH 2001
APPROVED BY: <i>M.L. ADKINS, C.E.S.</i> TITLE: OBEC	DESIGNED: M. SWANSON DRAWN: AD CHK'D: MLA
SCALE: 1:500	PROJ. NO. 19-66.2 FILE NO. 10855S SHT. 3 OF 5

I:\Projects\019\01906602\Survey\MS\10855\filed\_survey.dgn 03/16/2001

FILED MARCH 26, 2001  
BAKER COUNTY SURVEYOR  
SURVEY NO. 9-40-529