

DITCH EASEMENT, BOOK 69 PAGE 470, 10 FEET WIDE ALONG EAST, SOUTH AND WEST SIDES OF THE N 1/4 NW 1/4 SW 1/4, TO INTERSECT COUNTY ROAD ON EAST SIDE AND POWDER RIVER ON WEST SIDE.

# ELKHORN VISTA SUBDIVISION SD2000-004

### RESTRICTED ACCESS

Ingress and egress to Hughes Lane for Lots 6 through 11 is limited to the authorized access easements as shown on the annexed plat. Lot 1 has no legal access to Hughes Lane.

### ROAD CURVE DATA

6" C.L.  
Δ = 15° 31' 35"  
R = 954.93'  
ℳ = 130.18'  
L = 258.77'  
Lc = S. 84° 01' 32" E., 257.98'

### LEGEND

- Set 5/8" rebar with plastic cap marked "HANLEY ENGR. PLS 1817".
- Found, 5/8" rebar with plastic cap marked "HANLEY ENGR. PLS 1206" set by Partition Plat No. P1994-015.
- ⊗ Found, 1/2" rebar.
- Found, monument as noted.
- ⊙ Found, brass cap monument as noted.
- Found, O.S.H.D. R/W marker, 5/8" pin with 1 1/2" aluminum cap.
- ( ) Record data per Ba. Co. Sur. No. 9-40-68.
- { } Record data per Partition Plat No. P1994-015.
- Easement line.
- /// Dual access driveway easement.

### NOTES

1. Found 5/8" rebar set by Baker County Survey No. 9-40-35BC. This rebar is not accepted as the true West 1/4 corner position. True corner position is 5.56' South and 6.26' West of rebar.
2. Found R.R. Spike set in centerline of Hughes Lane, 0.8 feet West of the O.S.H.D. Highway No. 86 centerline.
3. Found O.S.H.D. 1 1/2" aluminum cap monument 0.10' North and 0.17' East of calculated position.
4. Found O.S.H.D. 1 1/2" aluminum cap monument 1.76' North and 5.89' West of calculated position.
5. Found O.S.H.D. 1 1/2" aluminum cap monument 2.41' North and 8.72' West of calculated position.
6. Found O.S.H.D. 1 1/2" aluminum cap monument 0.09' North and 0.18' East of calculated position.

I, Thomas J. Hanley, hereby certify that this is an exact duplicate copy of the subdivision plat as submitted to the Baker County Clerk for recording.

*Thomas J. Hanley*  
Thomas J. Hanley

SURVEYED OCTOBER 4 THRU  
NOVEMBER 16, 2000

REGISTERED  
PROFESSIONAL  
LAND SURVEYOR

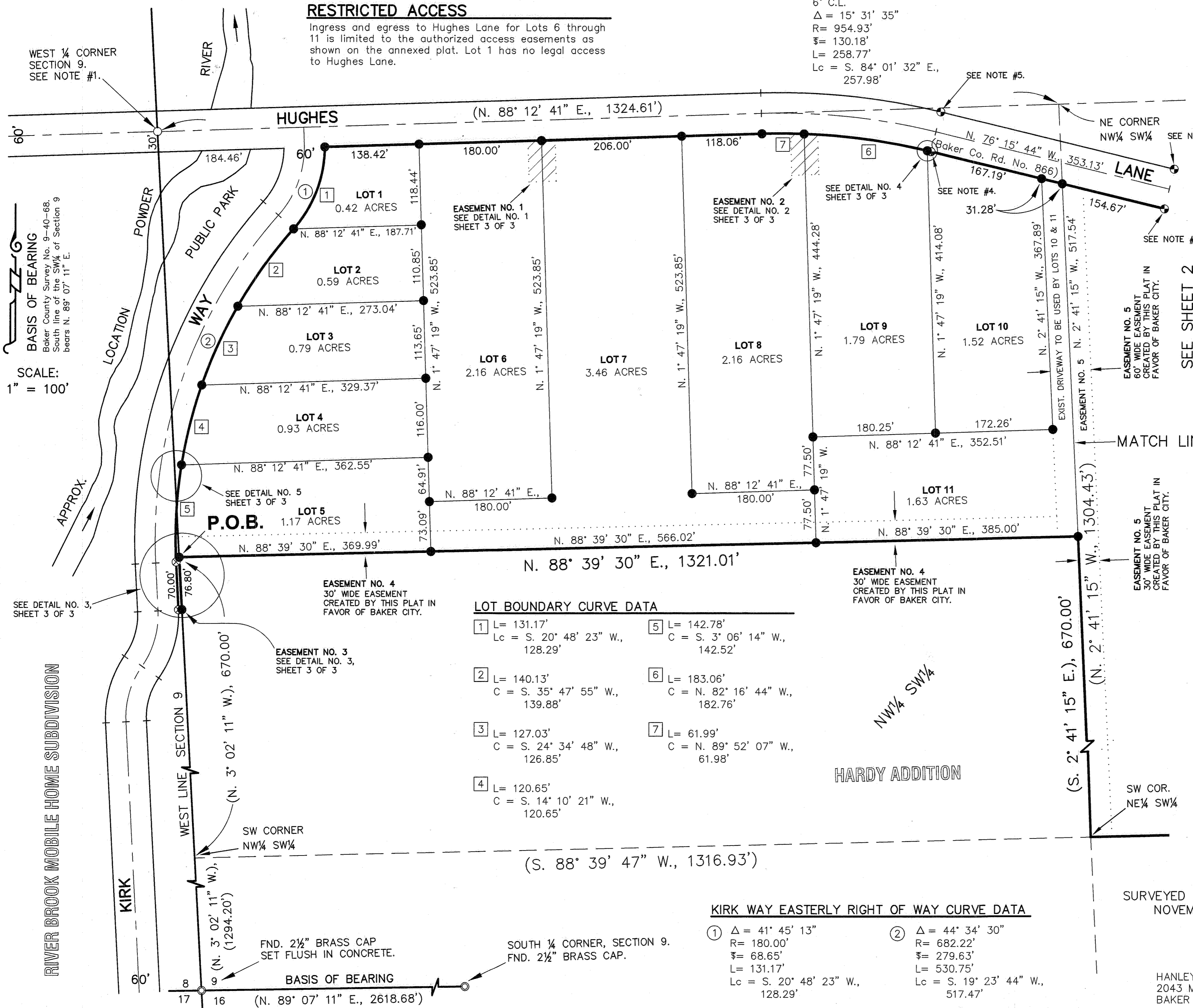
*Thomas J. Hanley*  
OREGON  
JULY 13, 1979  
THOMAS J. HANLEY  
1817

HANLEY ENGINEERING, INC.  
2043 MAIN STREET  
BAKER CITY, OREGON

Renews June 30, 2001

FILED NOV. 21, 2000  
BAKER COUNTY SURVEYOR  
SURVEY NO. 9-40-526SD

SHEET 1 OF 3



SEE SHEET 2

SEE SHEET 2

SEE SHEET 2

WEST 1/4 CORNER SECTION 9. SEE NOTE #1.

**BASIS OF BEARING**  
Baker County Survey No. 9-40-68. South line of the SW 1/4 of Section 9 bears N. 89° 07' 11" E.

**SCALE:**  
1" = 100'

RIVER BROOK MOBILE HOME SUBDIVISION

POWDER RIVER  
PUBLIC PARK

KIRK WAY

WEST LINE SECTION 9

FND. 2 1/2" BRASS CAP SET FLUSH IN CONCRETE.

SOUTH 1/4 CORNER, SECTION 9. FND. 2 1/2" BRASS CAP.

SW CORNER NW 1/4 SW 1/4

SW COR. NE 1/4 SW 1/4

MATCH LINE

HARDY ADDITION

