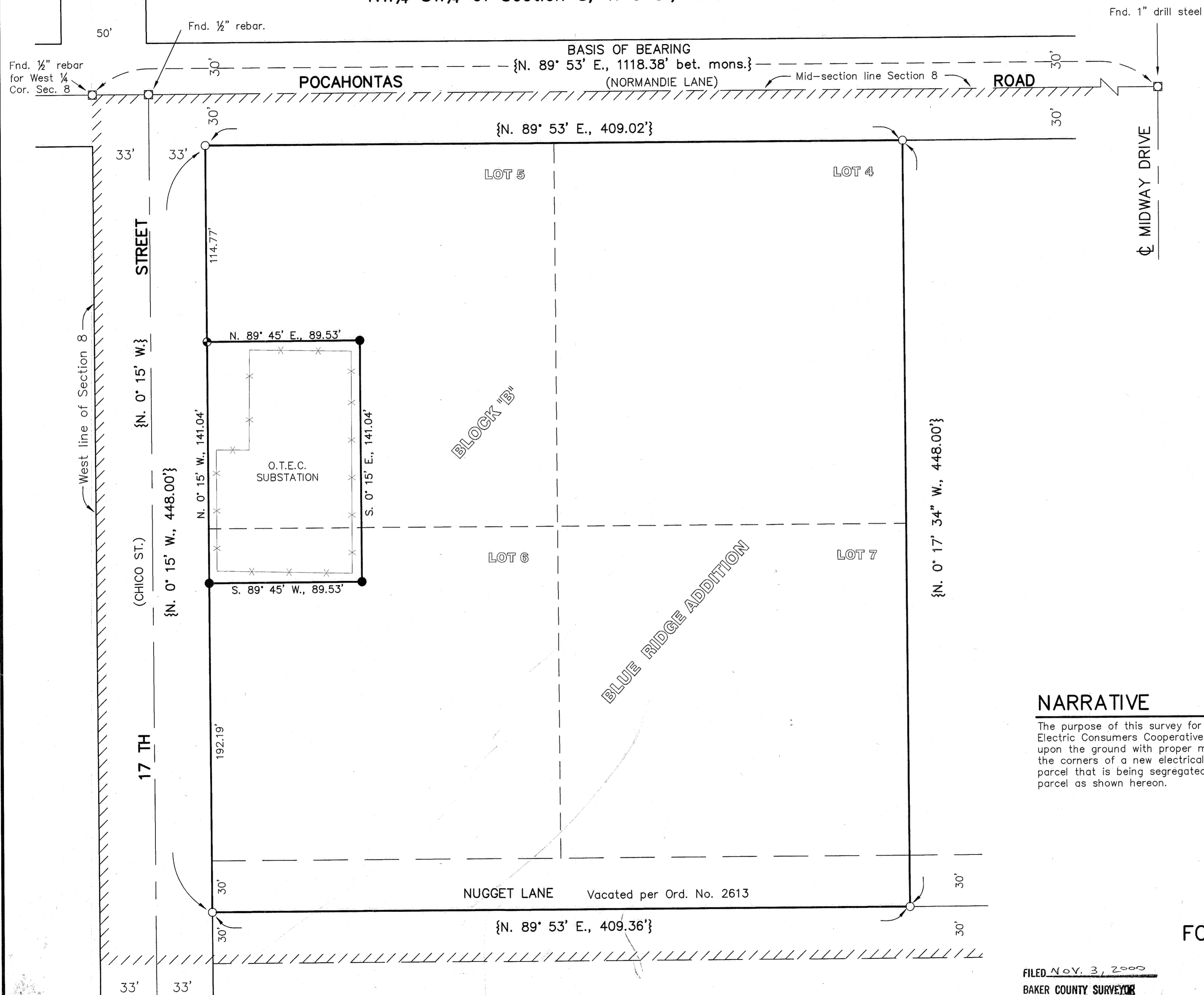


NW¼ SW¼ of Section 8, T. 9 S., R. 40 E. W.M.



**BASIS OF BEARING**  
Baker Co. Survey No. 9-40-446.

- LEGEND**
- Set 5/8" x 30" rebar with plastic cap marked "HANLEY ENGR. PLS 1817".
  - ⊕ Set 5/8" x 15" rebar with plastic cap marked "HANLEY ENGR. PLS 1817".
  - Found monument as noted in mon. box.
  - 5/8" rebar, not tied to this survey.
  - { } Record data per Baker County Survey Number 9-40-446.
  - X-X- Existing fence line.
  - ////// Addition boundary line.

- REFERENCES**
- Baker County Survey No. 9-40-21BC.
  - Baker County Survey No. 9-40-52BC.
  - Baker County Survey No. 9-40-222A.
  - Baker County Survey No. 9-40-273.
  - Baker County Survey No. 9-40-326.
  - Baker County Survey No. 9-40-446.

**NARRATIVE**

The purpose of this survey for Oregon Trail Electric Consumers Cooperative, Inc. is to mark upon the ground with proper monumentation, the corners of a new electrical substation parcel that is being segregated from the larger parcel as shown hereon.

**REGISTERED PROFESSIONAL LAND SURVEYOR**  
*Thomas J. Hanley*  
**OREGON**  
JULY 13, 1979  
**THOMAS J. HANLEY**  
1817

Renews June 30, 2001

**MAP OF SURVEY FOR LOT LINE ADJUSTMENT IN BLUE RIDGE ADDITION TO BAKER CITY, OREGON**

Surveyed October 31, 2000 for O.T.E.C.  
Scale: 1" = 40'

FILED Nov. 3, 2000  
BAKER COUNTY SURVEYOR  
SURVEY NO. 9-40-525

HANLEY ENGINEERING, INC.  
2043 MAIN STREET  
BAKER CITY, OREGON