

**RECORD OF SURVEY
FOR A PROPERTY LINE ADJUSTMENT
BETWEEN PARCELS 2 AND 3 OF PARTITION P 1999-006
WITHIN THE SW 1/4, SECTION 20
TOWNSHIP 9 SOUTH, RANGE 40 EAST, W.M.
BAKER CITY, BAKER COUNTY, OREGON.**

FILED 9-13-2000

BAKER COUNTY SURVEYOR

Thomas J. Hawley

SURVEY No. 9-40-522

DATE: JUNE 15, 2000

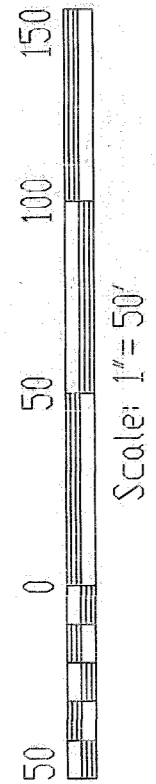
PREPARED BY:

EDWARDS & CUMMINGS, LLC
CIVIL/STRUCTURAL ENGINEERING
LAND SURVEYING * GPS SERVICES

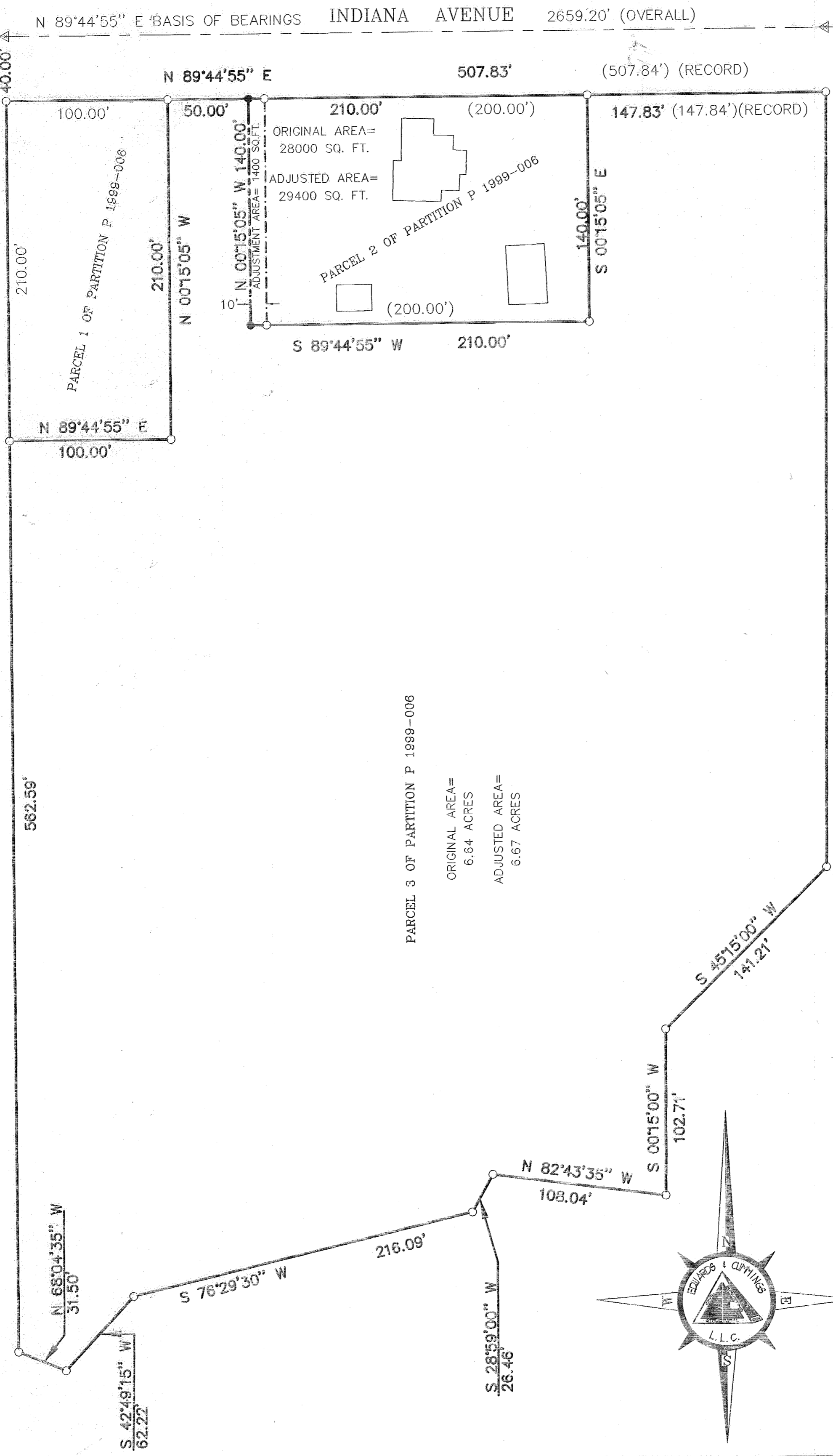
106 SE 1ST AVENUE
SUITE 202
HERMISTON, OR 97138
OFFICE: (541) 869-5411
FAX: (541) 869-2014
E-MAIL: edc@edcum.com

Job No. CO-99105 DWG No. B-870

FIND BRASS CAP AS PER
REF. (1) AND (2) W1/4 CORNER
SECTION 20, T9S, R40E, W.M.



N 00°15'05" W 772.59'



ORIGINAL AREA = 28000 SQ. FT.
ADJUSTED AREA = 29400 SQ. FT.
ADJUSTMENT AREA = 1400 SQ. FT.

PARCEL 3 OF PARTITION P 1999-006

ORIGINAL AREA = 6.64 ACRES
ADJUSTED AREA = 6.67 ACRES

REFERENCES:

- (1) "MAP OF SURVEY" BAKER COUNTY SURVEY No. 9-40-482
- (2) RECORD OF SURVEY, BAKER COUNTY SURVEY No. 9-40-107
- (3) PARTITION PLAT No. P 1999-006

LEGEND

- PARTITION P 1999-006 BOUNDARIES
- OLD PROPERTY LINE
- NEW ADJUSTED LINE
- RIGHT-OF-WAY
- CENTERLINE
- OF RECORD
- FND. 5/8" dia. REBAR
- ⊕ SET 5/8" X 30" REBAR
- ⊖ MONUMENT / AS NOTED
- △ CALCULATED POINT

SURVEYOR'S CERTIFICATION & NARRATIVE

I, DANNY K. CUMMINGS, A REGISTERED PROFESSIONAL LAND SURVEYOR, HEREBY CERTIFY THAT ON 6/15/2000, A SURVEY WAS STARTED, AND WAS COMPLETED ON 6/15/2000, AT THE REQUEST OF WES AND DIANE RALEY, TO ADJUST THE PROPERTY LINE BETWEEN PARCELS 2 AND 3 OF PARTITION PLAT No. P 1999-006. CONTROL FOR THIS SURVEY IS AS PER REFERENCES (1) AND (2) AND (3), AS SHOWN HEREON. THE BASIS OF BEARINGS FOR THIS PLAT IS THE LINE BETWEEN THE WEST 1/4 CORNER, AND THE CENTER 1/4 CORNER OF SECTION 20, T9S, R40E, W.M. I HEREBY CERTIFY THAT THIS PLAT IS A TRUE AND ACCURATE REPRESENTATION OF THAT SURVEY, RECORD AND MEASURED DATA SHOWN ON THIS PLAT ARE ONE AND THE SAME, UNLESS OTHERWISE NOTED.

REGISTERED
PROFESSIONAL
LAND SURVEYOR
Danny K. Cummings
OREGON
JAN. 21, 1988
DANNY K. CUMMINGS
2-316

RENEWAL DATE: 12-31-01