

NW¼ NW¼ SEC. 15, T. 9 S., R. 40 E., W.M.

PARCEL NO. 2 OF PARTITION PLAT P 1991-008.

PARTITION PLAT NO. P 1999-015

{N. 88° 52' 30" E., 1322.59'}

P.O.B. NW Corner Sec. 15

NE Corner NW¼ NW¼ Sec. 15, set by Baker Co. Sur. No. 9-40-234.

LEGEND

- Set 5/8" rebar with plastic cap marked "HANLEY ENGR. PLS 1817".
- Found, 5/8" rebar with plastic cap marked "HANLEY ENGR. PLS 1206".
- ⊙ Found, O.S.H.D. R/W marker, 5/8 pin with aluminum cap.
- Found, city monument in steel case.
- Found, monument as noted.
- ⊙ Sewer Manholes.
- ⊗ Water Valve.
- ( ) Record Data Per J.M. Boyd's Addition.
- (( )) Record Data Per Deed.
- { } Record Data Per Partition Plat P1990-003.
- [ ] Record Data Per Baker Co. Sur. No. 9-40-25BC.
- < > Record Data Per Baker Co. Sur. No. 9-40-234.
- [[ ]] Record Data Per Partition Plat No. 1992-013.
- x-x- Existing fence line.
- //// Addition Boundary Line.

REFERENCES

- Baker County Deed 88 28 053.
- Baker County Deed 88 20 124, also filed in Baker County Court Journal, Book "G", Page 415, recorded dated August 12, 1910.
- Baker County Deed Book 164, Page 383 recorded dated May 31, 1955.
- J.M. Boyd's Second Addition to Baker City. O.D.O.T. Highway Drawing No. 1A-21-12.
- Baker County Partition Plat No. P 1990-003.
- Baker County Partition Plat No. P 1991-008.
- Baker County Partition Plat No. P 1992-013.
- Baker County Partition Plat No. P 1994-007.
- Baker County Survey Number 9-40-25BC.
- Baker County Survey Number 9-40-41BC.
- Baker County Survey Number 9-40-234.
- Baker County Survey Number 9-40-476.

NOTES:

1. Water and sewer lines may cross Denver Street under Baker Co. Rd. Dept. Permit No. 99-062.
2. Existing 12 foot wide utility easement. Deed 99 51 119.

Scale: 1" = 100'

Fnd. 5/8" rebar for the SE Corner of the NW¼ NW¼ of Sec. 15, set by Partition Plat No. 1994-007.

I, Thomas J. Hanley, hereby certify that this is an exact duplicate copy of the partition plat as submitted to the Baker County Clerk for recording.

Thomas J. Hanley  
Thomas J. Hanley

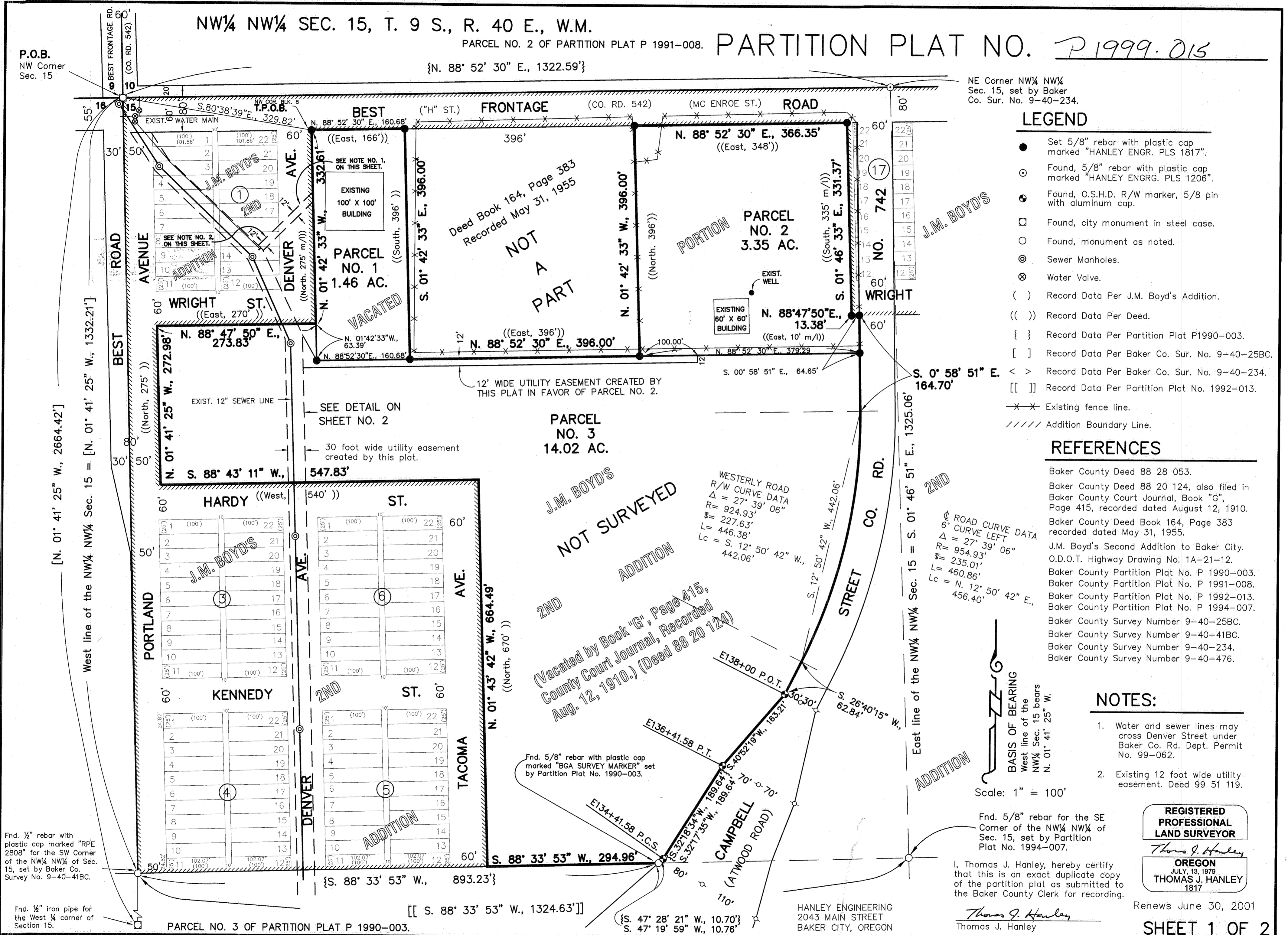
REGISTERED PROFESSIONAL LAND SURVEYOR

THOMAS J. HANLEY  
JULY 13, 1979  
1817

Renews June 30, 2001

SHEET 1 OF 2

FILED January 3, 2000  
BAKER COUNTY SURVEYOR  
SURVEY NO. 9-40-511MP



Fnd. 1/2" rebar with plastic cap marked "RPE 2808" for the SW Corner of the NW¼ NW¼ of Sec. 15, set by Baker Co. Survey No. 9-40-41BC.

Fnd. 1/2" iron pipe for the West 1/4 corner of Section 15.

PARCEL NO. 3 OF PARTITION PLAT P 1990-003.

HANLEY ENGINEERING  
2043 MAIN STREET  
BAKER CITY, OREGON