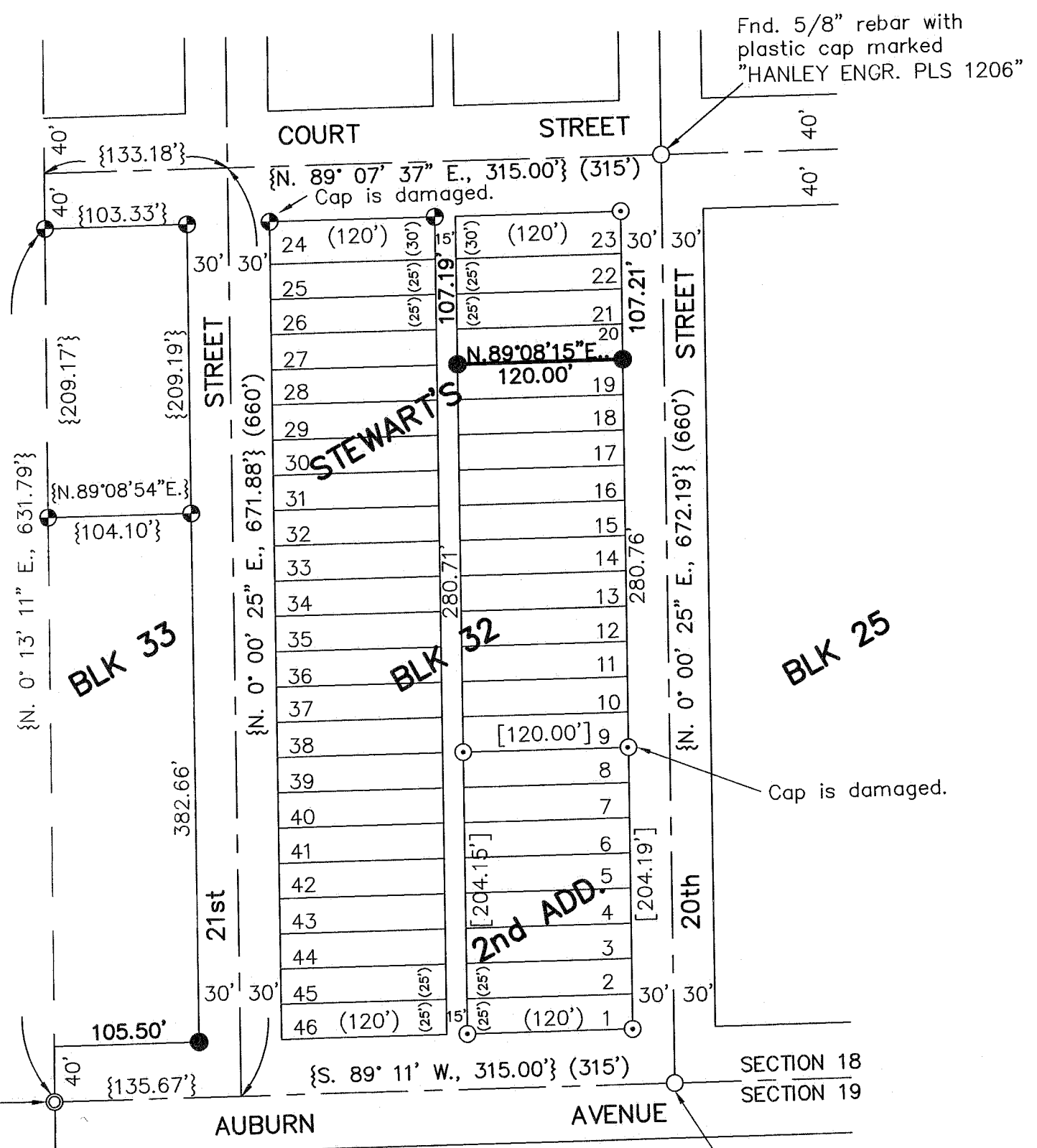
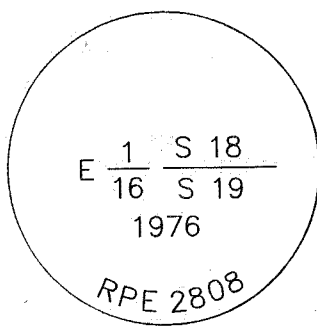


BASIS OF BEARING
 Baker County Survey
 No. 9-40-437.



REFERENCES

- Baker County Survey No. 9-40-199.
- Baker County Survey No. 9-40-351.
- Baker County Survey No. 9-40-437.

LEGEND

- Set 5/8" rebar with plastic cap marked "HANLEY ENGRG. PLS 1206".
- ⊙ Found, 5/8" rebar with plastic cap marked "HANLEY ENGR. PLS 1206", set by Baker Co. Sur. No. 9-40-351.
- ⊕ Found, 5/8" rebar with plastic cap marked "HANLEY ENGR. PLS 1206", set by Baker Co. Sur. No. 9-40-437.
- Found monument as noted.
- ⊙ Found monument of record, 2 1/2" aluminum cap on 1" galv. iron pipe.
- () Record distance, Stewart's 2nd Add. Plat.
- [] Record Data Baker Co. Survey No. 9-40-351.
- { } Record Data Baker Co. Survey No. 9-40-437.

NARRATIVE

The purpose of this survey for Dick and Judy Marr is to mark on the ground with proper monumentation the Southeast corner of Block 33 and the South line of Lot 20, Block 32, in Stewart's 2nd Addition to Baker City, Oregon. Monumentation shown on Baker County Survey Nos. 9-40-199, 9-40-351 and 9-40-437 was recovered this survey.

REGISTERED PROFESSIONAL LAND SURVEYOR
Thomas J. Hanley
OREGON
 JULY, 13, 1979
THOMAS J. HANLEY
 1817

Renews June 30, 2001

MAP OF SURVEY
IN BLOCKS 32 AND 33
STEWART'S SECOND ADDITION
 FOR DICK AND JUDY MARR
 Surveyed March 23rd & 25th, 1999
 Scale: 1" = 100'

HANLEY ENGINEERING
 2043 MAIN STREET
 BAKER CITY, OREGON

FILED 12-22-1999
 BAKER COUNTY SURVEYOR
 SURVEY NO. 9-40-509