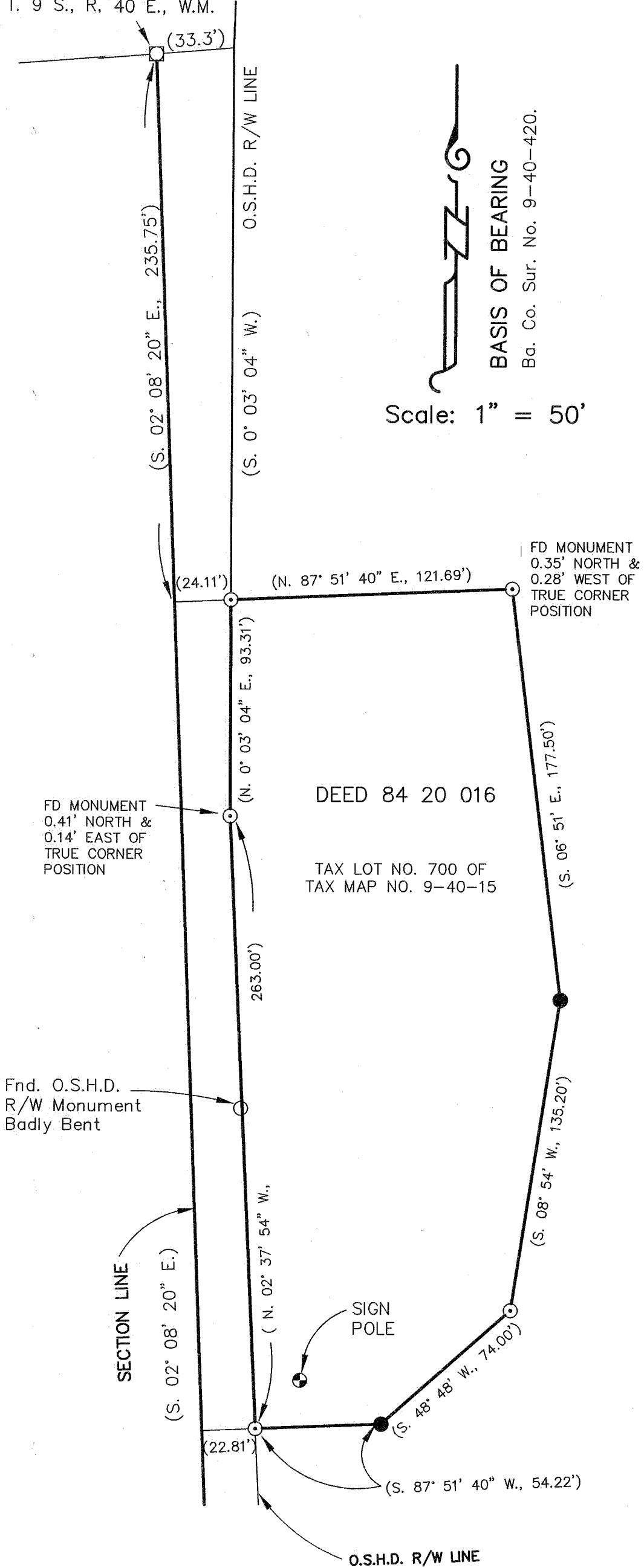


East 1/4 corner Section 16
T. 9 S., R. 40 E., W.M.



NARRATIVE

The purpose of this survey for John Zukin is to replace missing property corners, with proper monumentation, that were set previously by Baker County Survey No. 9-40-420. See said survey for more information regarding fencing, buried power lines and ties to the centerline of Interstate 84, since that information was not duplicated hereon.

LEGEND

- Set 5/8" rebar with plastic cap marked "HANLEY ENGR. PLS 1817".
- ⊙ Found, 5/8" rebar with plastic cap marked "HANLEY ENGR. PLS 1206".
- Found, monument as noted.
- Found, city monument in steel case.
- () Data Per Baker Co. Sur. No. 9-40-420.

**REGISTERED
PROFESSIONAL
LAND SURVEYOR**

Thomas J. Hanley

OREGON
JULY, 13, 1979
THOMAS J. HANLEY
1817

RENEWS JUNE 30, 2001

MAP OF SURVEY

SECTION 15, T. 9 S., R. 40 E., W.M.
BAKER COUNTY, OREGON

Surveyed November 2, 1999

for John Zukin

Scale: 1" = 50'

HANLEY ENGINEERING
2043 MAIN STREET
BAKER CITY, OREGON

FILED *Nov. 17, 1999*
BAKER COUNTY SURVEYOR
SURVEY NO. *9-40-507*