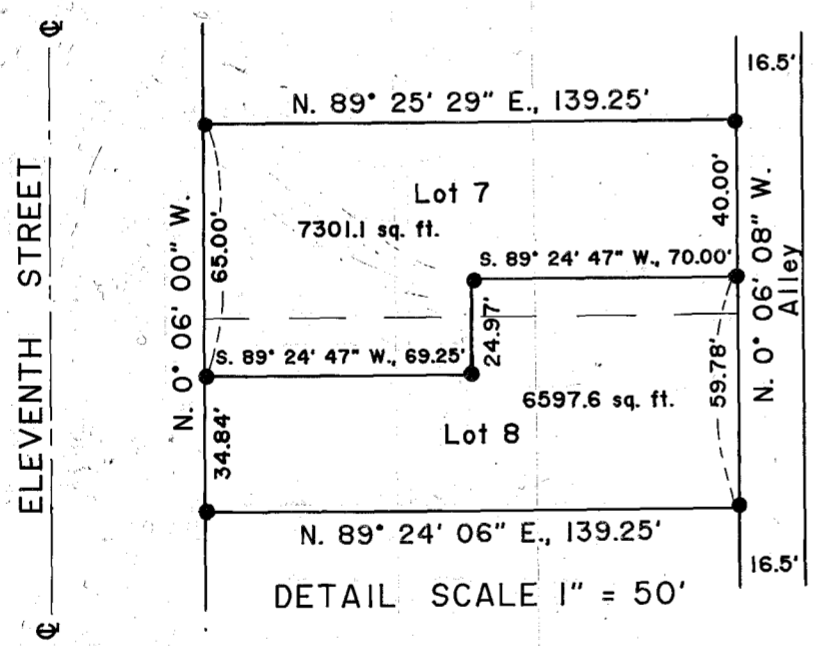


Scale: 1" = 100'



LEGEND

- Set 5/8" X 30" rebar with plastic cap marked "HANLEY ENGR. PLS 1206"
- ⊠ Found city monument in steel case.
- () Plat distance.

NARRATIVE

This survey for Leonard Gazley is for purpose of marking on the ground with standard monumentation the corners of his property in Lots 7 and 8, B.W. Leven's Add'n and proposed property line adjustment within these two lots as per his instructions. Controlling monumentation was recovered at street intersection 11th and "A", 11th and Campbell and 12th and Campbell. Monuments along 10th Street are destroyed. See Narrative in Survey No. 9-40-381. The adjusted property line is parallel to line between Lots 7 and 8.

REFERENCES: ORIGINAL PLAT B.W. LEVEN'S ADD'N.
 COUNTY SURVEY NO. 9-40-79 BC
 COUNTY SURVEY NO. 9-40-198 A
 COUNTY SURVEY NO. 9-40-381

REGISTERED
 PROFESSIONAL
 LAND SURVEYOR

James D. Hanley
 OREGON
 SEPTEMBER 23, 1977
 JAMES D. HANLEY
 1206

Renews June 30, 1997

**LOT LINE ADJUSTMENT
 OF LOTS 7 & 8, BLOCK 8
 IN B.W. LEVEN'S ADD'N
 TO BAKER CITY, OREGON**
 Surveyed April 29, 1997
 For Leonard Gazley
 SCALES AS SHOWN

HANLEY ENGINEERING
 2043 MAIN STREET
 BAKER CITY, OREGON

FILED 5-5-97
 BAKER COUNTY SURVEYOR
 SURVEY NO. 9-40-462