

# LEGEND

- ⊙ POWER POLE
- DRY WELL or PEDESTAL (AS NOTED)
- ▣ FOUND MONUMENT IN STEEL CASE AS NOTED.
- SET 5/8" x 30" REBAR WITH PLASTIC CAP MARKED "HANLEY ENGR PLS 1206"
- ⊕ WATER VALVE
- LOCATION OF ELEVATION SHOT
- ◆ FIRE HYDRANT
- ⊙ MANHOLE
- W — WATER LINE, SIZE AS NOTED
- SS — SANITARY SEWER, SIZE AS NOTED

# SITE SURVEY

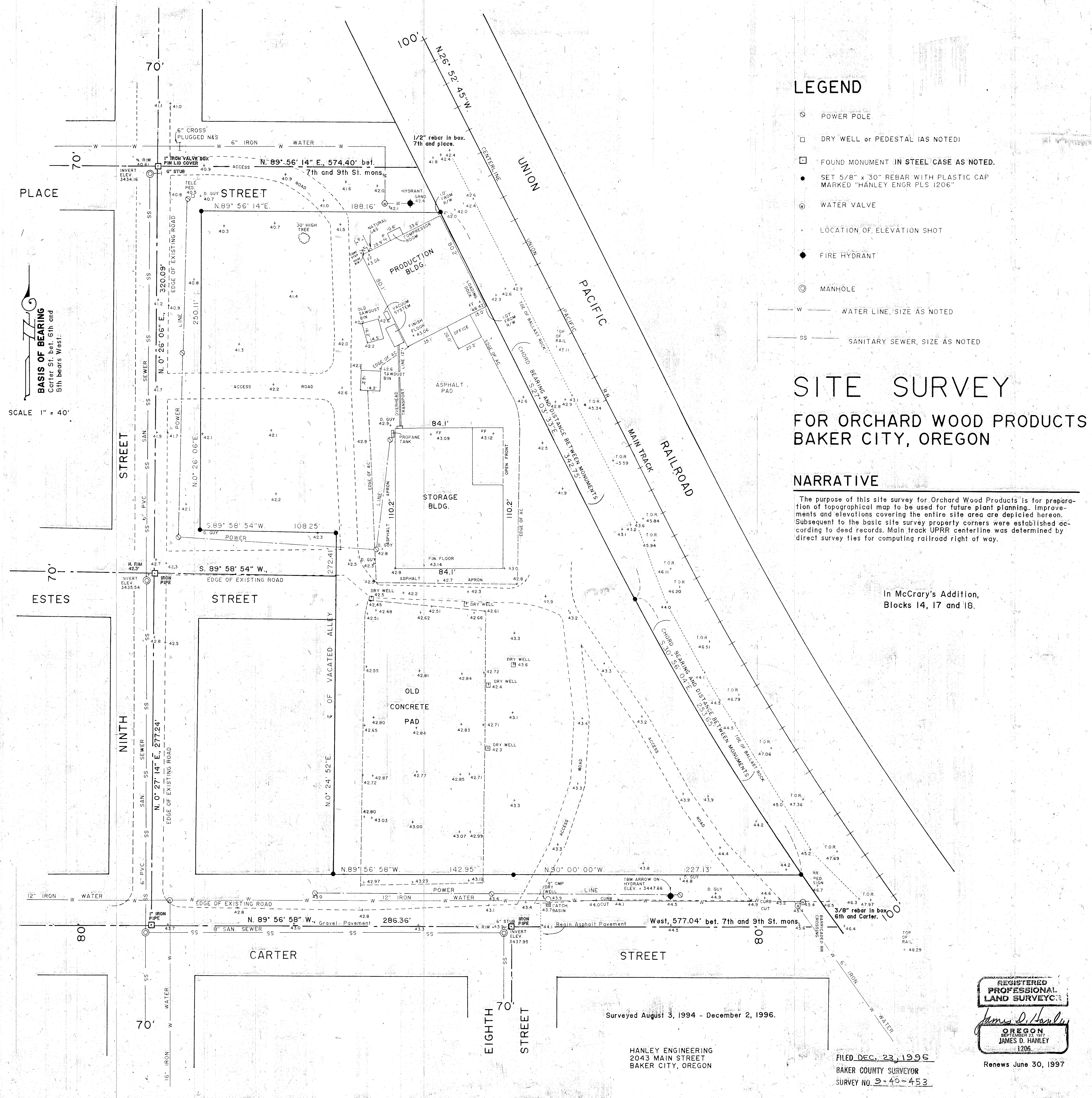
## FOR ORCHARD WOOD PRODUCTS

## BAKER CITY, OREGON

### NARRATIVE

The purpose of this site survey for Orchard Wood Products is for preparation of topographical map to be used for future plant planning. Improvements and elevations covering the entire site area are depicted hereon. Subsequent to the basic site survey property corners were established according to deed records. Main track UPRR centerline was determined by direct survey ties for computing railroad right of way.

In McCrary's Addition,  
Blocks 14, 17 and 18.



**BASIS OF BEARING**  
Carter St. bet. 6th and 9th bears West.

SCALE 1" = 40'

Surveyed August 3, 1994 - December 2, 1996.

HANLEY ENGINEERING  
2043 MAIN STREET  
BAKER CITY, OREGON

FILED DEC. 23, 1996  
BAKER COUNTY SURVEYOR  
SURVEY NO. 2-40-453

REGISTERED  
PROFESSIONAL  
LAND SURVEYOR

*James D. Hanley*

OREGON  
SEPTEMBER 23, 1977  
JAMES D. HANLEY  
1206

Renews June 30, 1997