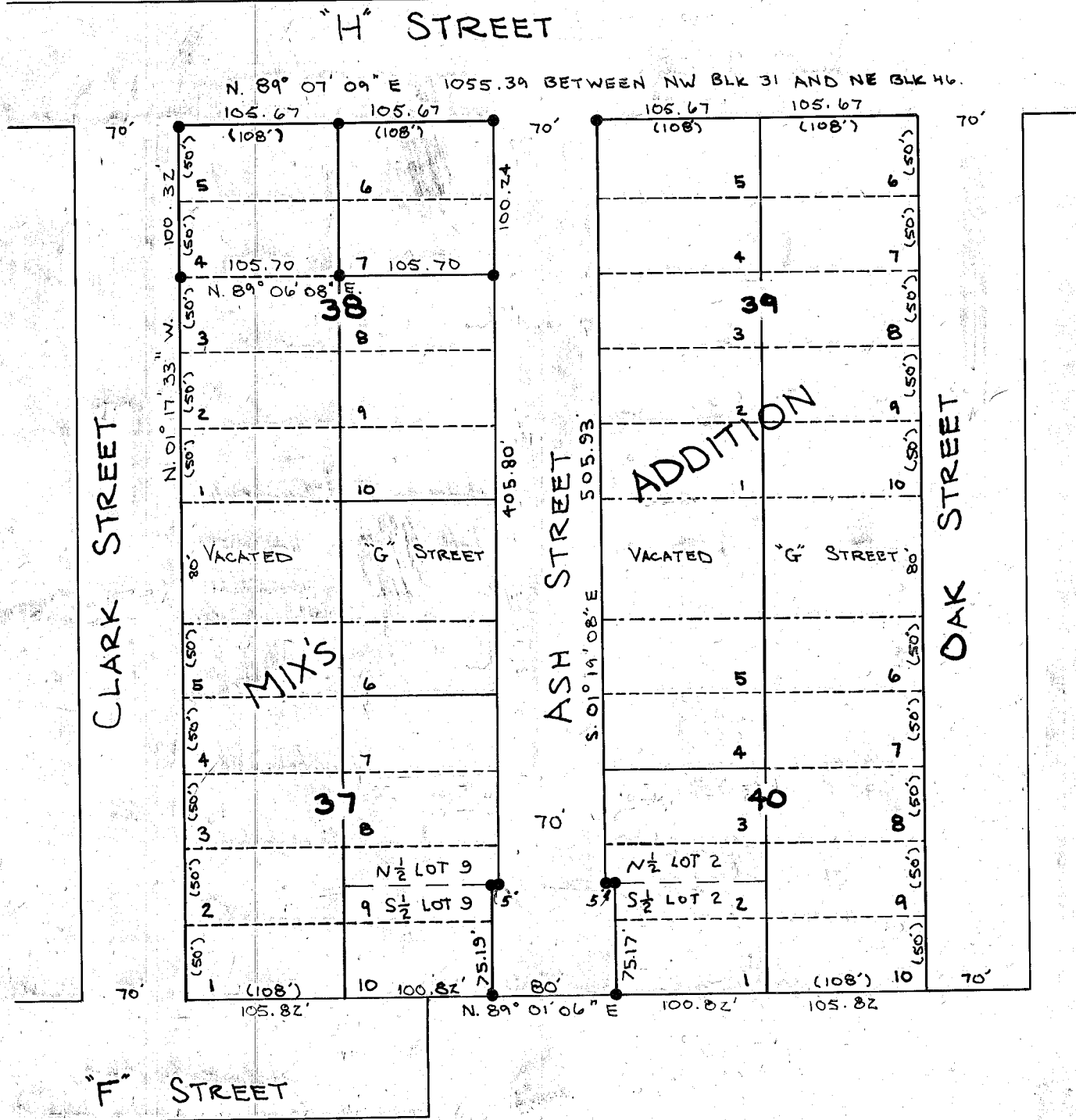


MONUMENTATION RECOVERED AT CENTERLINE "H" STREET AND EAST STREET AND THE NE CORNER NW 1/4 OF SECTION 16, T.9 S. R. 40 E., W.M. ESTABLISHES "H" STREET CENTERLINE.



NARRATIVE

THE PURPOSE OF THIS SURVEY FOR MARYELLEN OLSON IS TO MONUMENT THE STREET BOUNDARIES IN MIX'S ADDITION. DEVELOPMENT OF THIS STREET REQUIRED ADDITIONAL LAND AT THE SOUTH END IN ORDER TO ACCOMMODATE A CUL-DE-SAC ACCORDING TO BAKER CITY STANDARDS. THE LAND WILL BE DEEDED TO THE CITY. MONUMENTATION CONTROLLING ASH STREET LOCATION IS FOUND ON SURVEY NO. 9-40-175 BC. BASIS OF BEARING ARE HELD FROM THAT SURVEY.

LEGEND

- SET 5/8" x 30" REBAR W/ PLASTIC CAP MKD. "HANLEY ENGRG PLS 1206".
- () PLAT RECORD DISTANCE

REFERENCE SURVEY NO. 9-40-25 BC
9-40-175 BC

**MAP OF SURVEY
ASH STREET IN MIX'S ADDITION**

SCALE 1" = 100'

MONUMENTATION SURVEYED AUGUST 8, 1995

REGISTERED PROFESSIONAL LAND SURVEYOR
James D. Hanley
OREGON
SEPTEMBER 23, 1977
JAMES D. HANLEY
1206

FILED 9-15-95

BAKER COUNTY SURVEYOR
SURVEY NO. 9-40-416

RENEWAL DATE JAN. 1, 1996