

# NARRATIVE

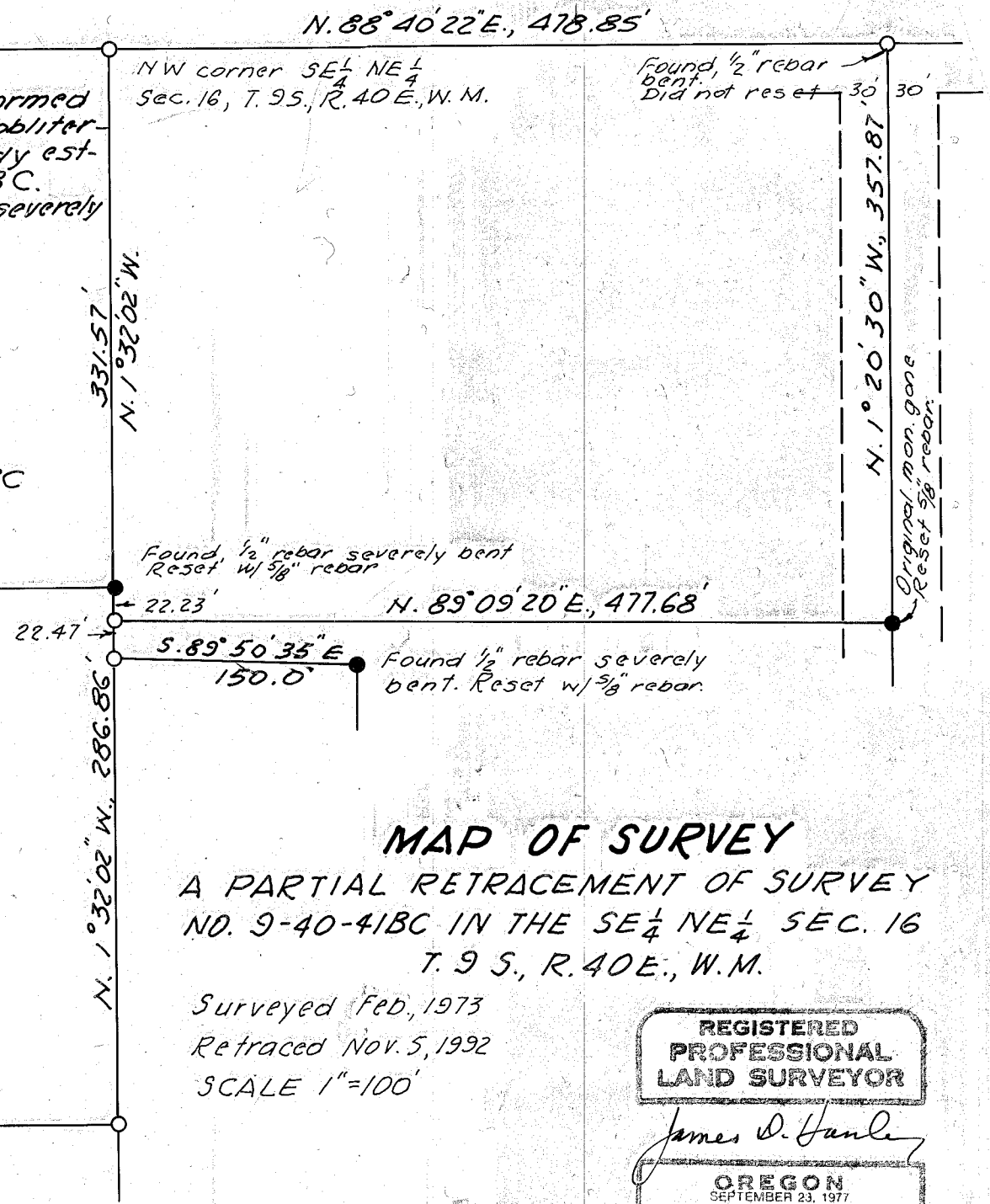
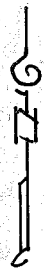
The purpose of this resurvey for Sunridge Inn, performed at the request of Alan Blair, was to reset or replace obliterated property corner monuments that had been previously established as shown on Baker County Survey No. 9-40-41 BC. Several of these monuments found slightly bent, others severely bent and some removed from the ground.

# LEGEND

○ Found 1/2" rebar monument of record Sur. No. 9-40-41 BC

● Reset at record location with 5/8" x 30" rebar with plastic cap mkt "HANLEY ENGR. PLS 1206"

Brngs and distances are the above record data, basis for this retracement.



# MAP OF SURVEY

A PARTIAL RETRACEMENT OF SURVEY NO. 9-40-41 BC IN THE SE 1/4 NE 1/4 SEC. 16 T. 9 S., R. 40 E., W. M.

Surveyed Feb., 1973  
Retraced Nov. 5, 1992  
SCALE 1"=100'

REGISTERED  
PROFESSIONAL  
LAND SURVEYOR

James D. Hanley  
OREGON  
SEPTEMBER 23, 1977  
JAMES D. HANLEY  
1206

FILED July 14, 1993  
BAKER COUNTY SURVEYOR  
SURVEY NO. 9-40-373