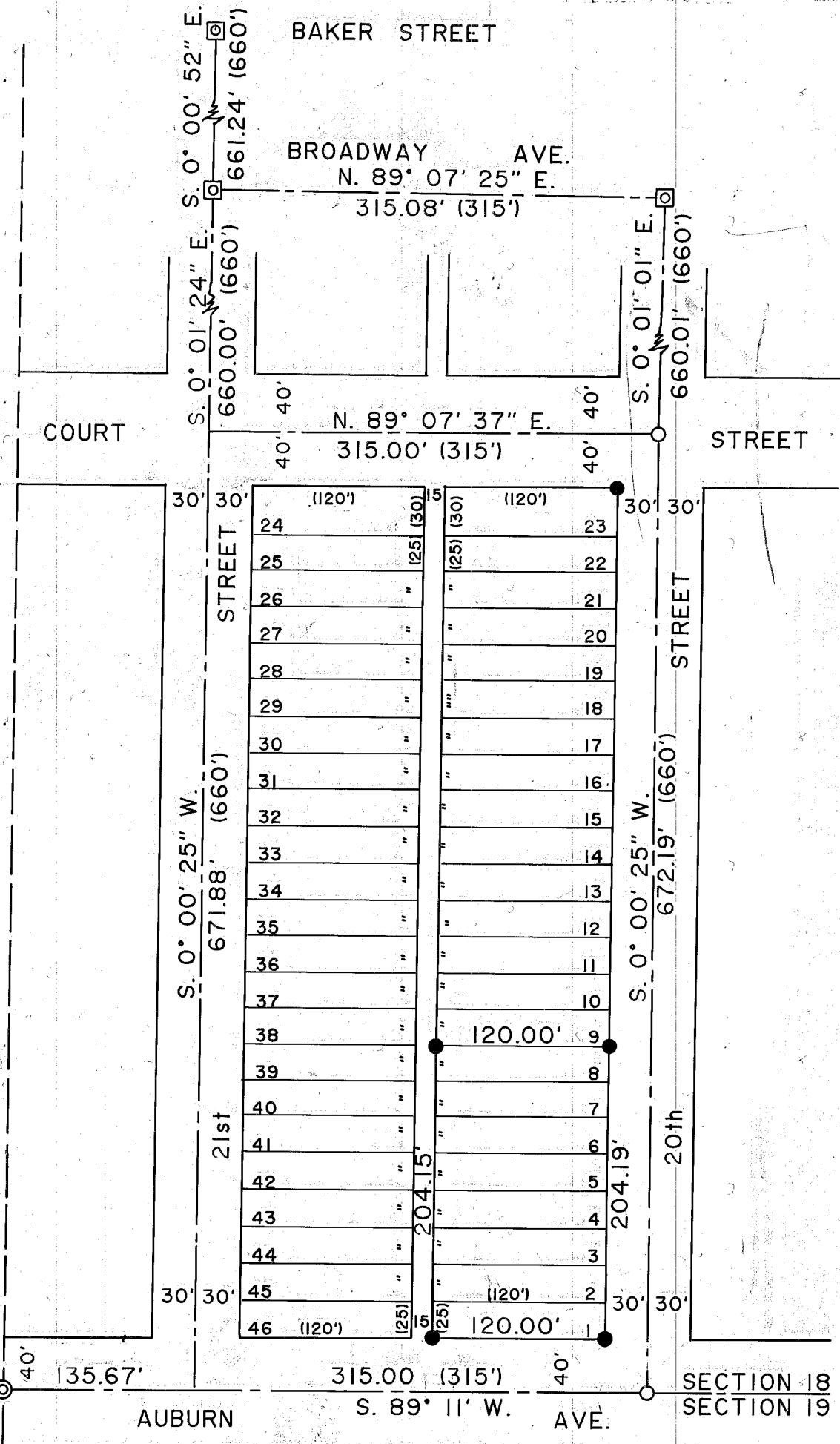


Held the 20th Street centerline bearing from Survey No. 9-40-199

CORNER 1/4 SE 1/4 SECTION 18



SURVEY NARRATIVE

The purpose of this survey for John and Jana Harvey is to monument selected lot corners in Block 32, Stewart's 2nd Addition to Baker City.

Recovery of city street monumentation was made along 21st Street centerline intersections with Baker and Broadway Streets and along 20th Street centerline intersections with Court Street and Auburn Avenues. No other monumentation along 21st Street exists.

The intersection of Court Street and 21st Street centerlines was determined by 660 feet plat distance measured South from 21st and Broadway and 315 feet plat distance measured West from the Court Street and 20th Street found monuments.

The Auburn Avenue and 21st Street centerline intersection was established at 315 feet plat distance along the section line from 20th and Auburn.

Block 32 was then traversed along surrounding street centerline and the line between Lots 8 and 9 was marked using proportionate measurements according to standard survey practices. The South line of Lot 1 and North line of Lot 23 were also monumented as shown.

LEGEND

- Found monument of record, 5/8" rebar with plastic cap marked "HANLEY ENGR. PLS 1206"
- ◻ Found monument of record, in steel case, 5/8" rebar with plastic cap marked "City of Baker PLS 2162"
- ⊙ Found monument of record, 2 1/2" aluminum cap on 1" galv. iron pipe
- Set 5/8" x 30" rebar with plastic cap marked "HANLEY ENGR. PLS 1206"
- () Record distances, Stewart's 2nd. Addition Plat

Reference Survey: No. 9-40-199 of Block 25

MAP OF SURVEY IN BLOCK 32 STEWART'S SECOND ADDITION

SURVEYED APRIL 16 AND 17, 1992
FOR JOHN AND JANA HARVEY

SCALE 1" = 100'

HANLEY ENGINEERING
2043 MAIN STREET
BAKER CITY, OREGON

REGISTERED
PROFESSIONAL
LAND SURVEYOR

James D. Hanley
OREGON
SEPTEMBER 23, 1977
JAMES D. HANLEY
1206

FILED June 1, 1992
BAKER COUNTY SURVEYOR
SURVEY NO. 9-40-351