

City mon. of 8 and Madison is 330.19 ft. North of 8 and Church

Found City monument at Church and 6 St., 409.94 feet from Church and 8 St. mon.

CHURCH ST.

261.29' [261.18']

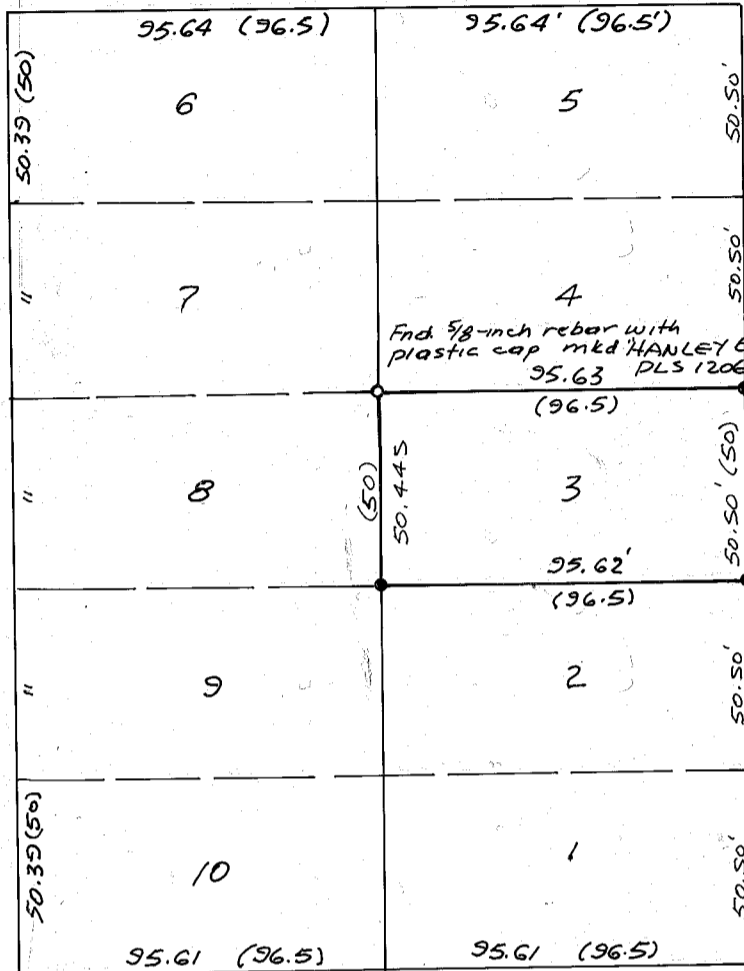
M.H.

City mon.

N. 89° 37' E.

Manhole rim is marked but has been rotated. Bailey map distances employed for street intersection.

148.65 [148.60']



Fnd 5/8-inch rebar with plastic cap mkd HANLEY ENGR 95.63 PLS 1206"

SEVENTH ST. 332.59' [332.62'] N. 0° 0' 16" W.

Assumed brng 8 and Church to 8 and Madison is North.

EIGHTH ST. 331.86' [331.75'] N. 0° 0' 50" W.

BROADWAY AVE. N. 89° 46' 40" E. 261.22' [261.18']

NARRATIVE:

This survey for Mike Nelson Real Estate and D & S Realty is for purpose of marking on the ground the boundaries of Lot 3. The Southeast corner was found in place, consisting of a 5/8-inch rebar with plastic cap marked HANLEY ENGR. City of Baker street monuments were found as shown and are basis of this survey control. Survey was conducted according to standard practices.

LEGEND:

- Found City of Baker street monuments
- Found as noted
- Set 5/8-inch x 30-inch rebar with plastic cap mkd. HANLEY ENGR PLS 1206"
- () Original plat distance
- [] Bailey map distance

REFERENCE SURVEYS:

Official plat of J.H. Parker's Addition
City Engr Bailey Map
Survey No. 9 40-127 BC.

MAP OF SURVEY
LOT 3, BLOCK 8, J.H. PARKER'S ADDITION
BAKER, OREGON

AUGUST 20 and 22, 1991

Scale: 1" = 50'

FILED 9-06-'91
BAKER COUNTY SURVEYOR
SURVEY NO. 9-40-343

REGISTERED PROFESSIONAL LAND SURVEYOR

James D. Hanley

OREGON
SEPTEMBER 23, 1977
JAMES D. HANLEY
1206

HANLEY ENGINEERING
2043 MAIN STREET
BAKER CITY, OR.