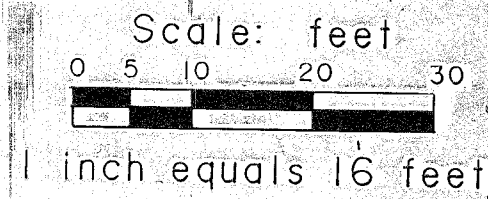


SECOND FLOOR

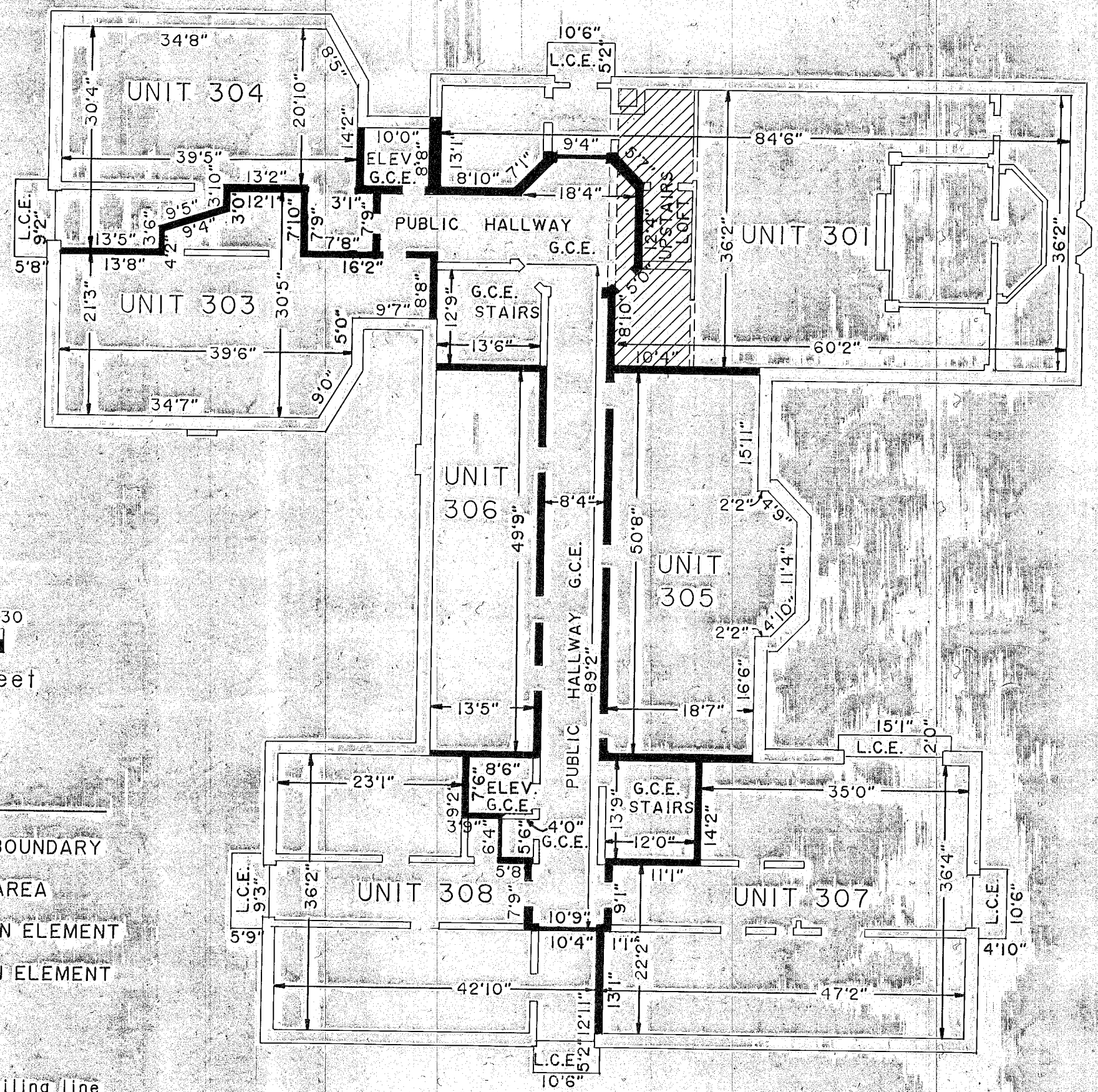
PARKING ASSIGNMENTS

UNIT NO.	PARKING SPACE	UNIT NO.	PARKING SPACE
201	20	301	4
202	21	303	15
203	18	304	13
204	19	305	12
205	16	306	11
206	17	307	7
207	5	308	8
208	6		

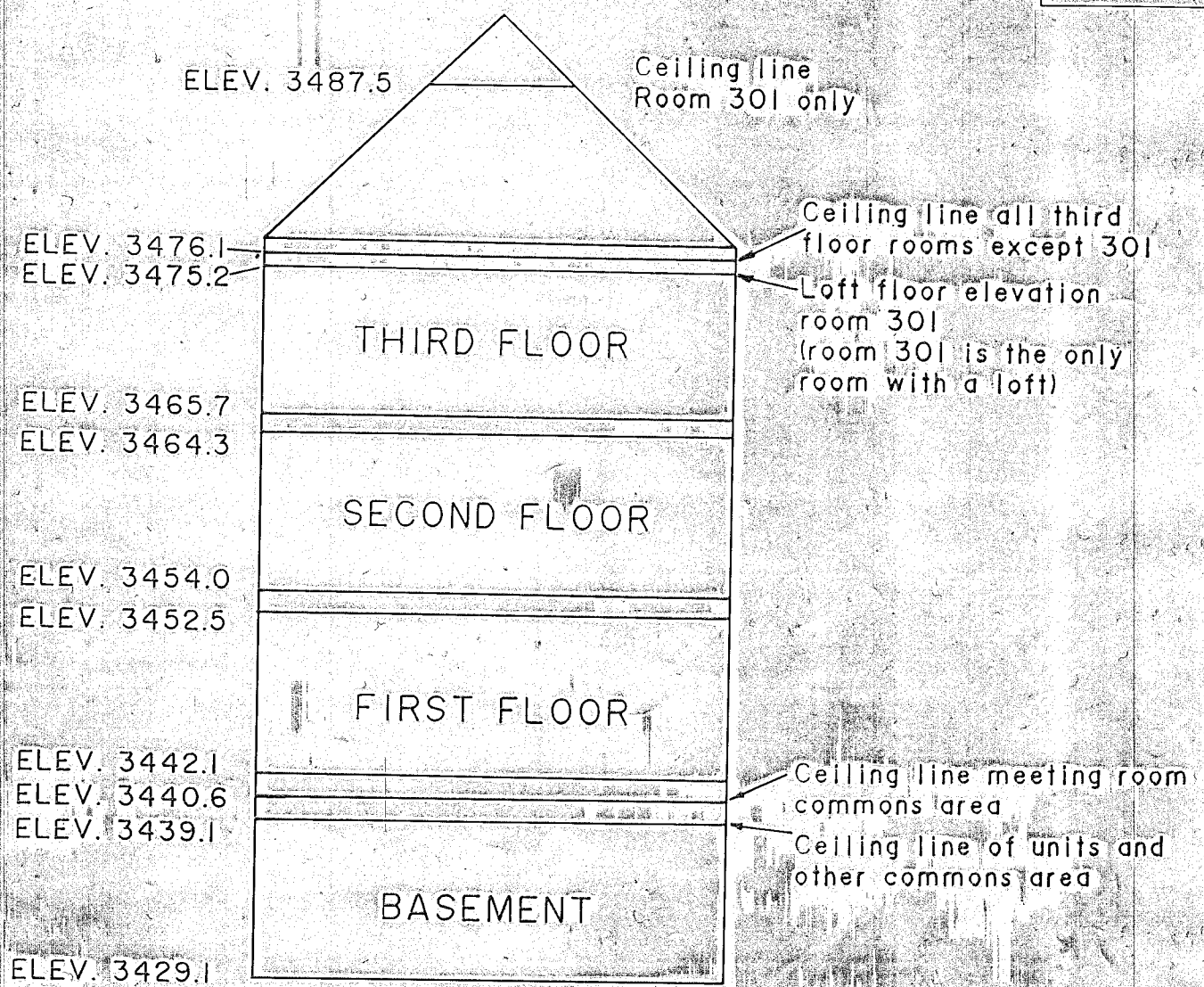
Basis of elevations: U.S.C.G.S. Benchmark No. V483, set in 1941 at the North entrance to the Baker Junior High School. Elevation of Benchmark is 3440.04 feet.



- LEGEND
- INTERIOR UNIT BOUNDARY
  - ▨ UNIT 301 LOFT AREA
  - G.C.E. GENERAL COMMON ELEMENT
  - L.C.E. LIMITED COMMON ELEMENT



THIRD FLOOR



No Scale

ST. ELIZABETH TOWERS  
CONDOMINIUM

REGISTERED  
PROFESSIONAL  
LAND SURVEYOR

*James D. Hanley*  
ORIGON  
JAMES D. HANLEY  
1206