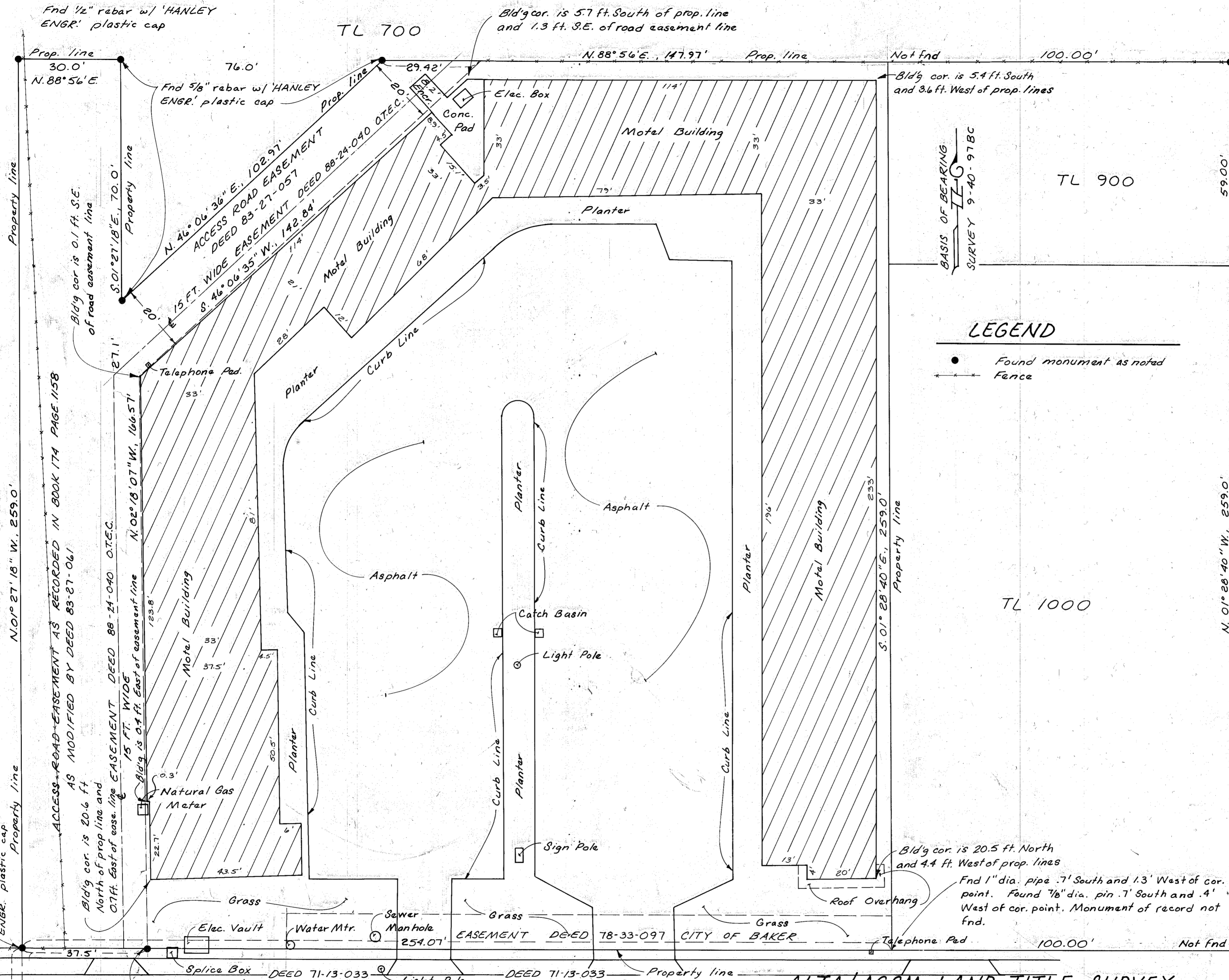


TL 400

TL 700

TL 900

TL 1000



LEGEND

- Found monument as noted
- +— Fence

TO **BOOTSMA INVESTMENT CO., INC.**
LAND TITLE INSURANCE & ESCROW CORP.:
 This is to certify that this map or plat and the survey on which it is based were made in accordance with "Minimum Standard Detail requirements for ALTA/ACSM Land Title Surveys," jointly established and adopted by ALTA and ACSM in 1983, meets the accuracy requirements of a Class A Survey, as defined therein, and includes items 2, 7, 9, 10, 11, 12 of Table 3 thereof.

REGISTERED
 PROFESSIONAL
 LAND SURVEYOR

James D. Hanley
 OREGON
 SEPTEMBER 23, 1977
 JAMES D. HANLEY
 1206

HANLEY ENGINEERING
 BAKER CITY, OREGON

ALTA/ACSM LAND TITLE SURVEY

A PARCEL IN THE SW 1/4 SE 1/4, SEC. 16
 T. 9 S., R. 40 E., W. M.

BAKER CITY, OREGON

SURVEYED: APRIL 23, 1990

FOR

BOOTSMA INVESTMENT CO., INC.

CAMPBELL STREET

N. 88° 55' 57" E., 718.54'

SCALE



FILED May 23, 1990
 BAKER COUNTY SURVEYOR
 SURVEY NO. 9-40-307