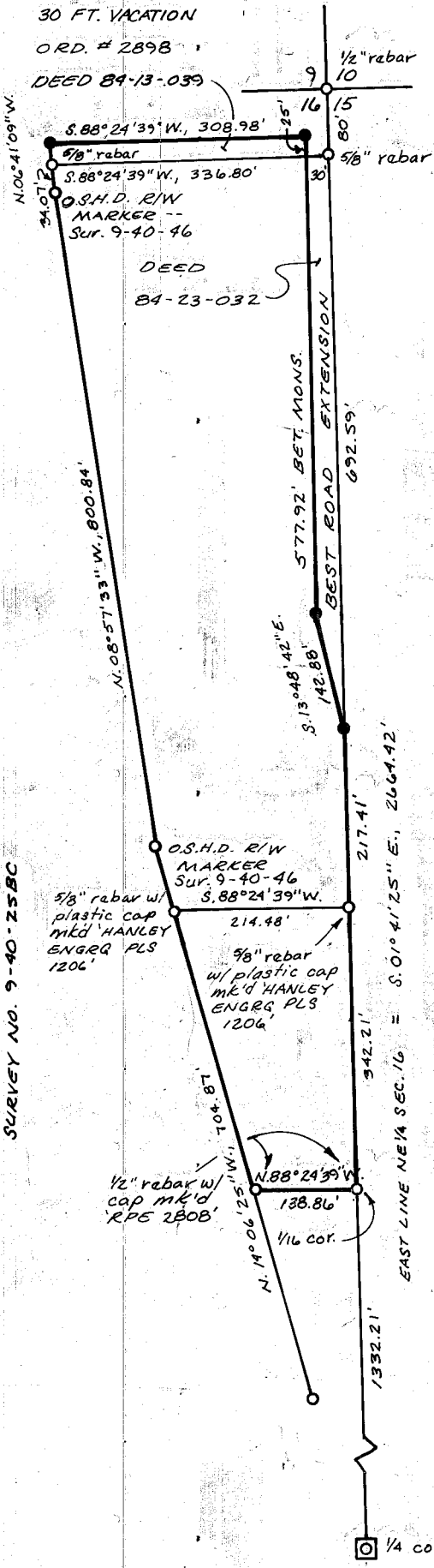


T. 9 S., R. 40 E., W. M.



BASIS OF BEARINGS
SURVEY NO. 9-40-25BC

MAP OF SURVEY

FOR

DUSTY RODE, BAKER VALLEY PACKING

SURVEYED: JAN. 12 and 31, 1990

SCALE: 1" = 200'

NARRATIVE

THIS SURVEY FOR DUSTY RODE WAS FOR THE PURPOSE OF MARKING ON THE GROUND THE PROPERTY CORNERS OF BAKER VALLEY PACKING. THE CORNER MONUMENTS ON THE SOUTH LINE OF THE SUBJECT PROPERTY, PREVIOUSLY SET (SURVEY NO. 9-40-41BC) WERE RECOVERED DURING THIS SURVEY.

REFERENCE SURVEYS

- 9-40-46 - RUSSELL RODE
- 9-40-41BC - BAKER RED MIX
- 9-40-25BC - CITY SURVEY OF 1970

LEGEND

- SET 5/8" x 30" REBAR W/ PLASTIC CAP MK'D "HANLEY ENGRG, PLS 1206"
- FOUND MONUMENT OF RECORD AS SHOWN HEREON
- ◻ MONUMENT IN CITY MONUMENT BOX

REGISTERED
PROFESSIONAL
LAND SURVEYOR

James D. Hanley

OREGON
SEPTEMBER 23, 1977
JAMES D. HANLEY
1206

HANLEY ENGINEERING
BAKER CITY, OREGON

FILED March 7, 1990

BAKER COUNTY SURVEYOR

SURVEY NO. 9-40-303