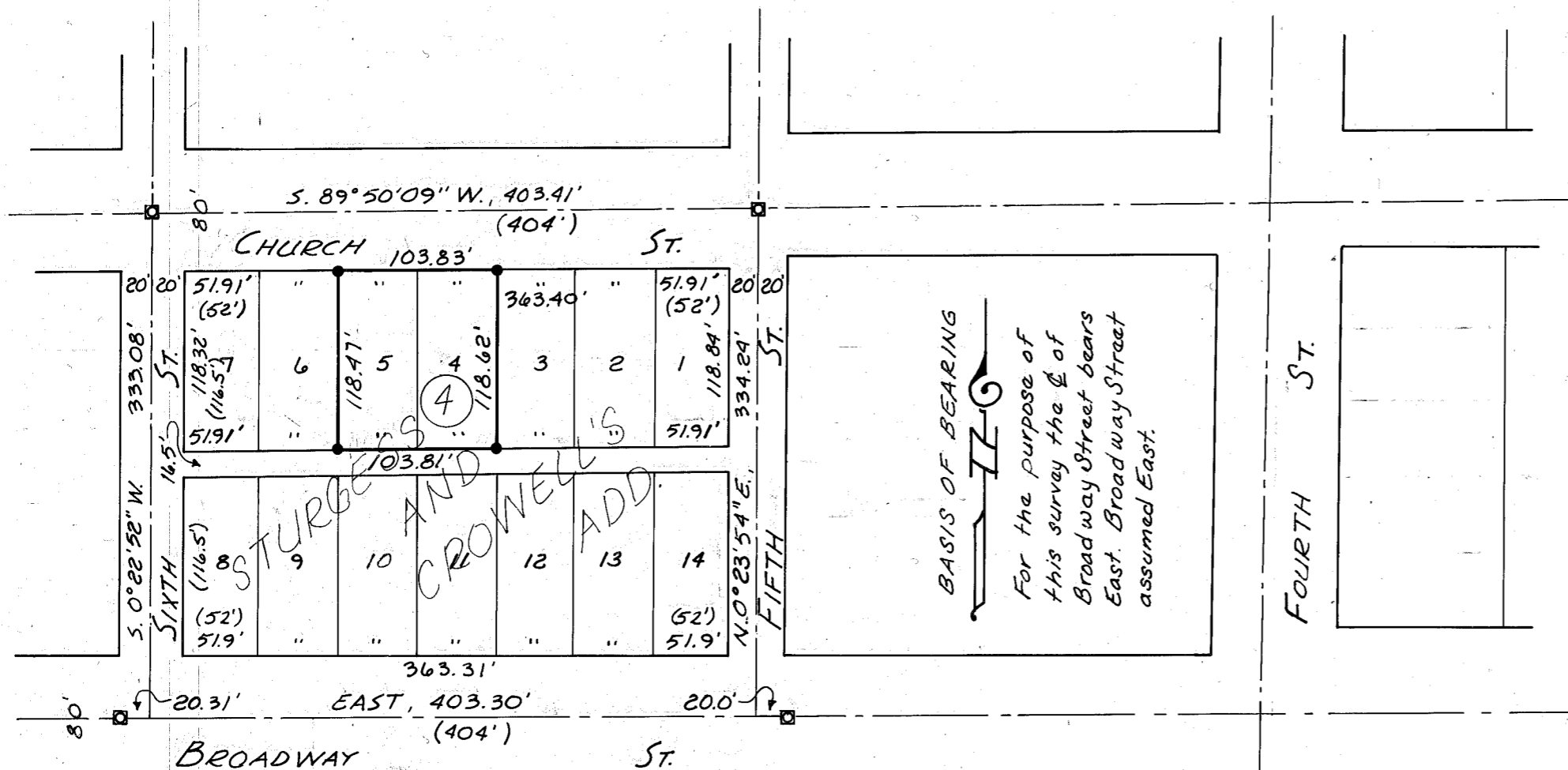


NARRATIVE

This survey for Warren Spencer was made for the purpose of marking on the ground the boundaries of Lots 4 and 5, Block 4, Sturgess and Crowell's Addition, Baker, Oregon. City street monuments were recovered as shown hereon and survey conducted according to standard practices.



LEGEND

- Set $\frac{5}{8}$ " x 30" rebar w/ plastic cap mkd, 'HANLEY ENGRG PLS 1206'
- ◻ Found city street monument in box
- () Record distance

MAP OF SURVEY
 LOTS 4 and 5, BLOCK 4,
 STURGESS and CROWELL'S
 ADDITION
 BAKER, OREGON
 FOR WARREN SPENCER
 SURVEYED MAY 6, 1988
 SCALE: 1" = 100'

REGISTERED
 PROFESSIONAL
 LAND SURVEYOR
James D. Hanley
 OREGON
 SEPTEMBER 23, 1977
 JAMES D. HANLEY
 1206

HANLEY ENGINEERING
 BAKER, OREGON
 FILED May 19, 1989
 BAKER COUNTY SURVEYOR
 SURVEY NO. 9-40-285