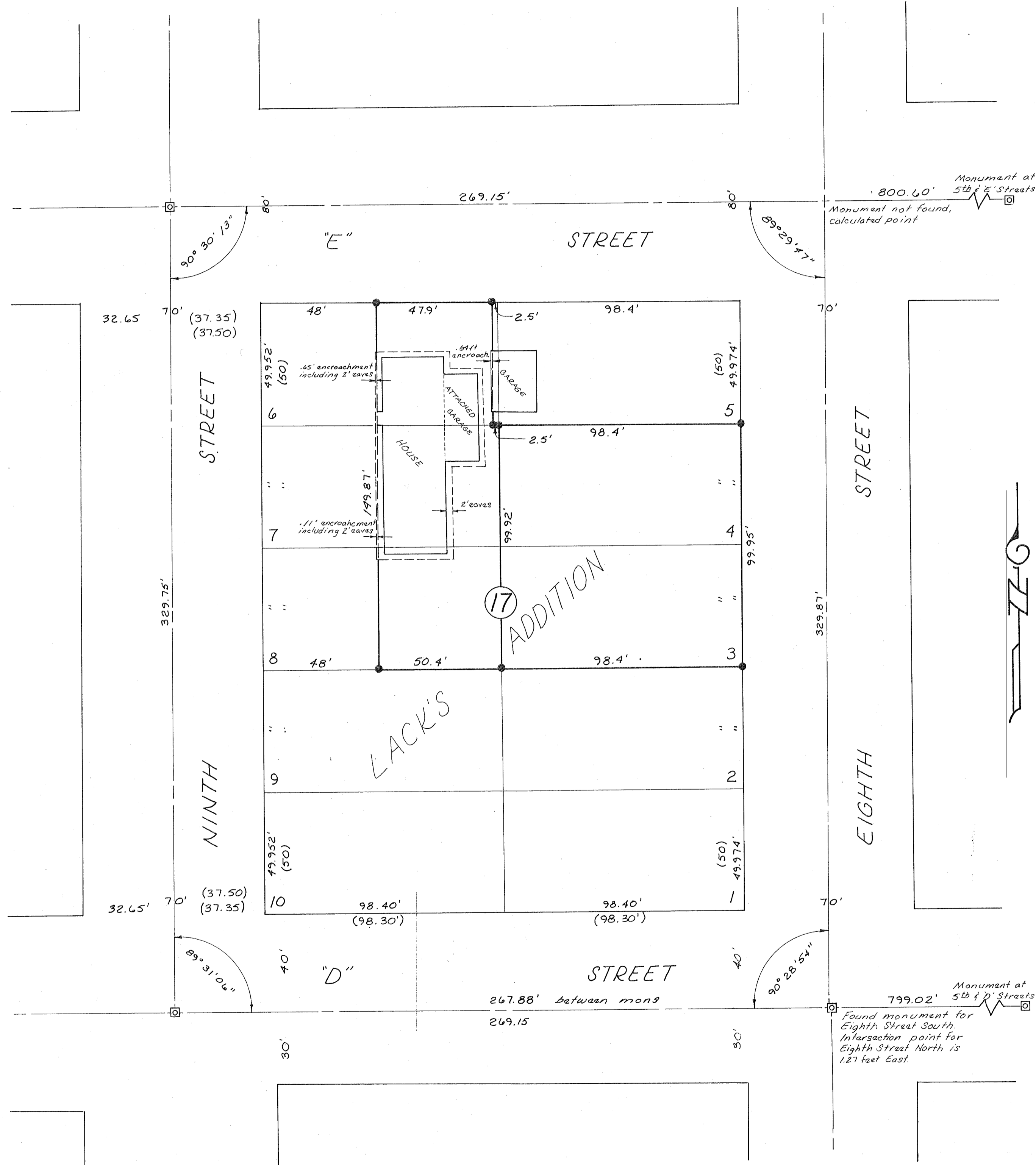


NARRATIVE

This survey for Pioneer Federal Savings was made for the purpose of marking on the ground portions of lots 6, 7 & 8 (being TL 2600), Block 17, Lacks Addition, Baker, Oregon; and for Helen Berdahl was made for the purpose of marking on the ground Lots 3 & 4, Block 17, Lacks Addition, Baker, Oregon. City street monuments were recovered as shown hereon and surveys proceeded following standard practices. Property line encroachments were discovered in the field and are shown hereon.



LEGEND

- — Set 5/8" x 30" rebar with plastic cap marked, 'HANLEY ENGINEERING, PLS 1206'
- ⊠ — Found city street monument in box
- () — Record distance

Please do Not Remove
 From Files - Original to
 9-40-284 can be
 Found at 9-40-229

MAP OF SURVEY BLOCK 17, LACK'S ADDITION BAKER, OREGON

FOR
 PIONEER FEDERAL SAVINGS
 AND
 HELEN BERDAHL
 JULY 23 & 26, 1985 AND APRIL 28, 1989
 SCALE: 1" = 30'

James Hanley
 HANLEY ENGINEERING
 BAKER, OREGON
 APR 28 1989
 FILED July 29, 1985
 SURVEY NO. 9-40-229
 9-40-284