

NARRATIVE

This survey is for the purpose of marking on the ground the boundaries of the parcel shown hereon. No monumentation was found at Court and Oak Street or Valley Ave. and Oak Street. The centerlines of Court Street and Valley Ave. were extended through the monuments marking the street intersections around block 17. The East-West plat distances were followed for establishing the West line of the subject property and the North-South lot distances by proportionate measurement.

LEGEND

- ☐ Found street monument in box
- Set 5/8" x 30" rebar
- () Original plat record
- [] Survey No. 9-40-154

MAP OF SURVEY FOR TIM TITUS

JULY 1, 1988 SCALE 1" = 100'

REGISTERED
PROFESSIONAL
LAND SURVEYOR

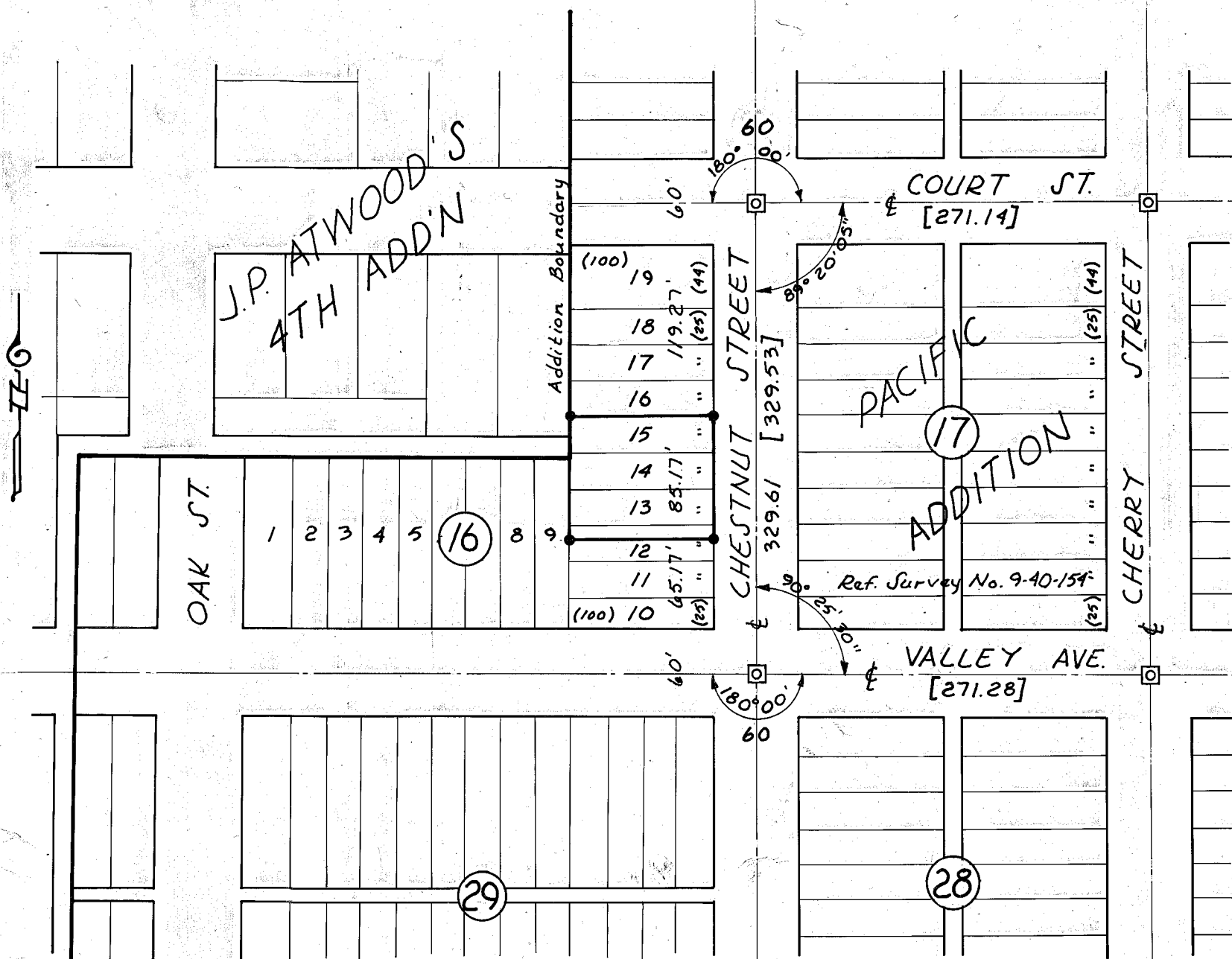
James D. Hanley

OREGON
SEPTEMBER 23, 1977
JAMES D. HANLEY
1206

FILED July 29, 1988

BAKER COUNTY SURVEYOR

SURVEY NO. 9-40-268



NOTE: Street monuments have been removed and replaced for paving. I do not believe they are in same original positions.