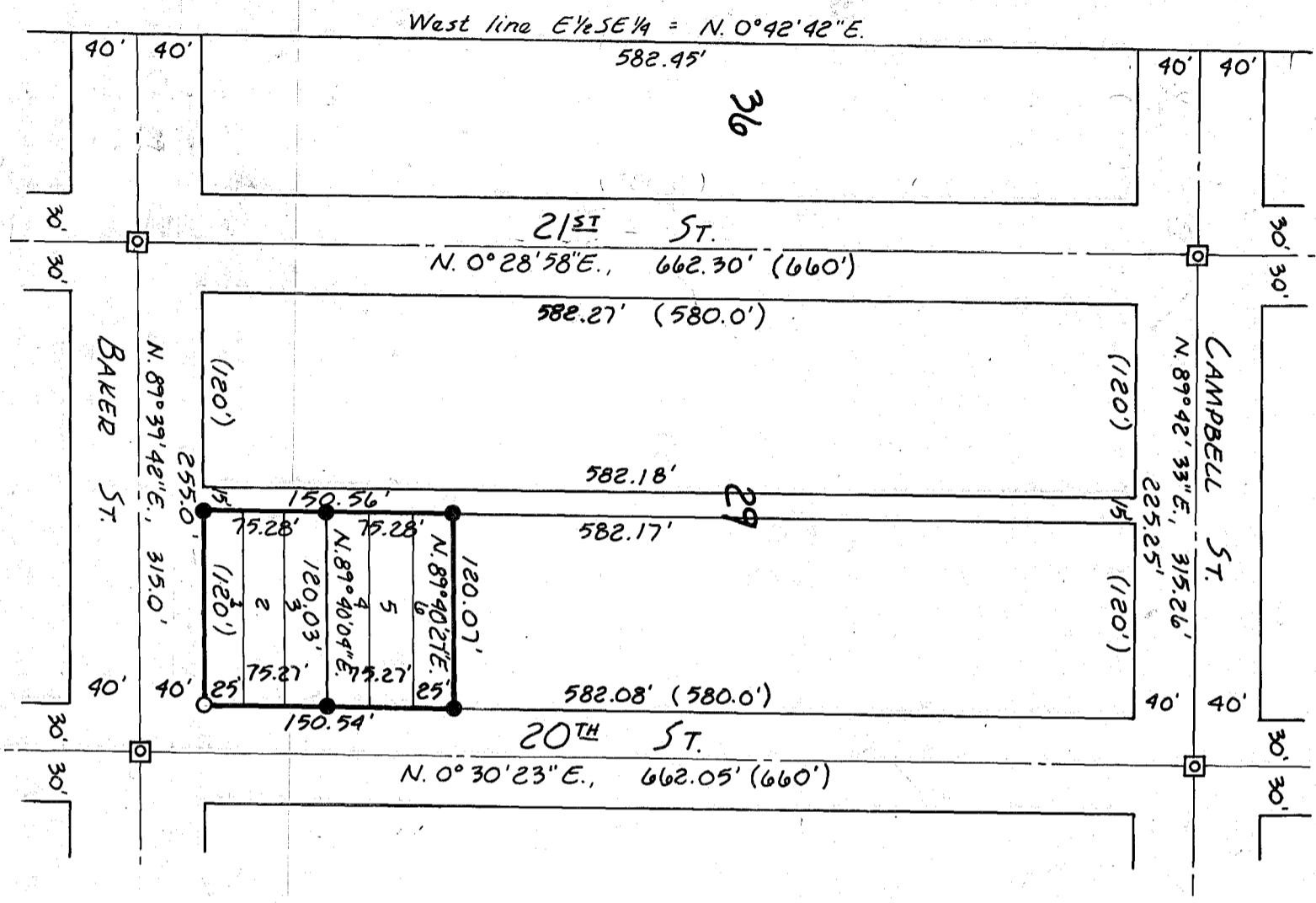




Basis of bearing by Survey No. 9-40-22. The West line Section 19 bears North.



**NARRATIVE:**

This survey for Cindy Slinker, for the purpose of marking on the ground the property corners shown hereon, was conducted according to standard survey practices after recovery of controlling street intersection monuments. Reference Survey - # 9-40-178

**MAP of SURVEY**  
**IN BLOCK 29,**  
**STEWART'S SECOND ADD'N**  
 SURVEYED Oct. 6, 1987 Scale: 1"=100'  
 for CINDY SLINKER

**LEGEND:**

- Found monument as noted
- ◻ Found city monument in box
- Set 5/8" x 30" rebar
- ( ) Plat record

FILED Nov. 18 1987  
 BAKER COUNTY SURVEYOR  
 SURVEY NO. 9-40-257

