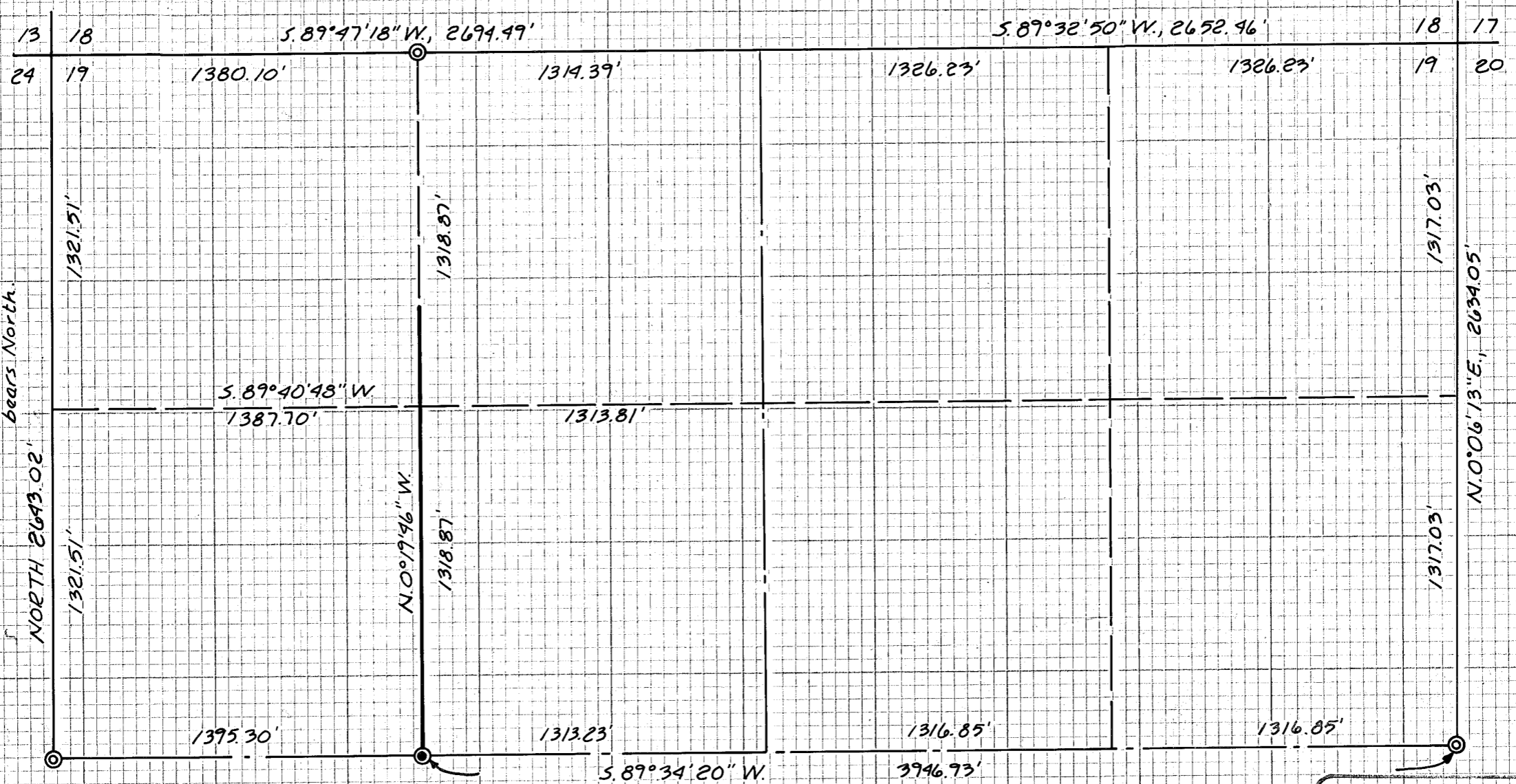


Basis of Bearings:
 The Guide Meridian between Range 39 and 40 East bears North.



LEGEND:

- ⊙ Found monument of record
- ⊙ Set 2 1/2" brass cap on 1" iron pipe marked "W 1/16 C-C S19 PLS 1206"

NARRATIVE:

This survey for Patrick Shipsey was for the purpose of monumenting the W 1/16 C-C corner of Section 19 and marking on the ground the West line of the SE 1/4 NW 1/4, the East 1/4 corner, the West 1/4 corner and the W 1/16 S19 corner monuments were recovered and the survey proceeded according to standard practices. Reference Survey No. 9-40-2A

MAP OF SURVEY
 IN THE N 1/2 OF SECTION 19,
 T. 9 S., R. 40 E., W.M.

Surveyed Dec 11 & 12, 1986, Scale 1"=500'
 FOR PATRICK SHIPSEY

REGISTERED
 PROFESSIONAL
 LAND SURVEYOR
James D. Hanley
 OREGON
 SEPTEMBER 23, 1977
 JAMES D. HANLEY
 1206

FILED Dec. 18, 1986
 BAKER COUNTY SURVEYOR
 SURVEY NO. 9-40-248