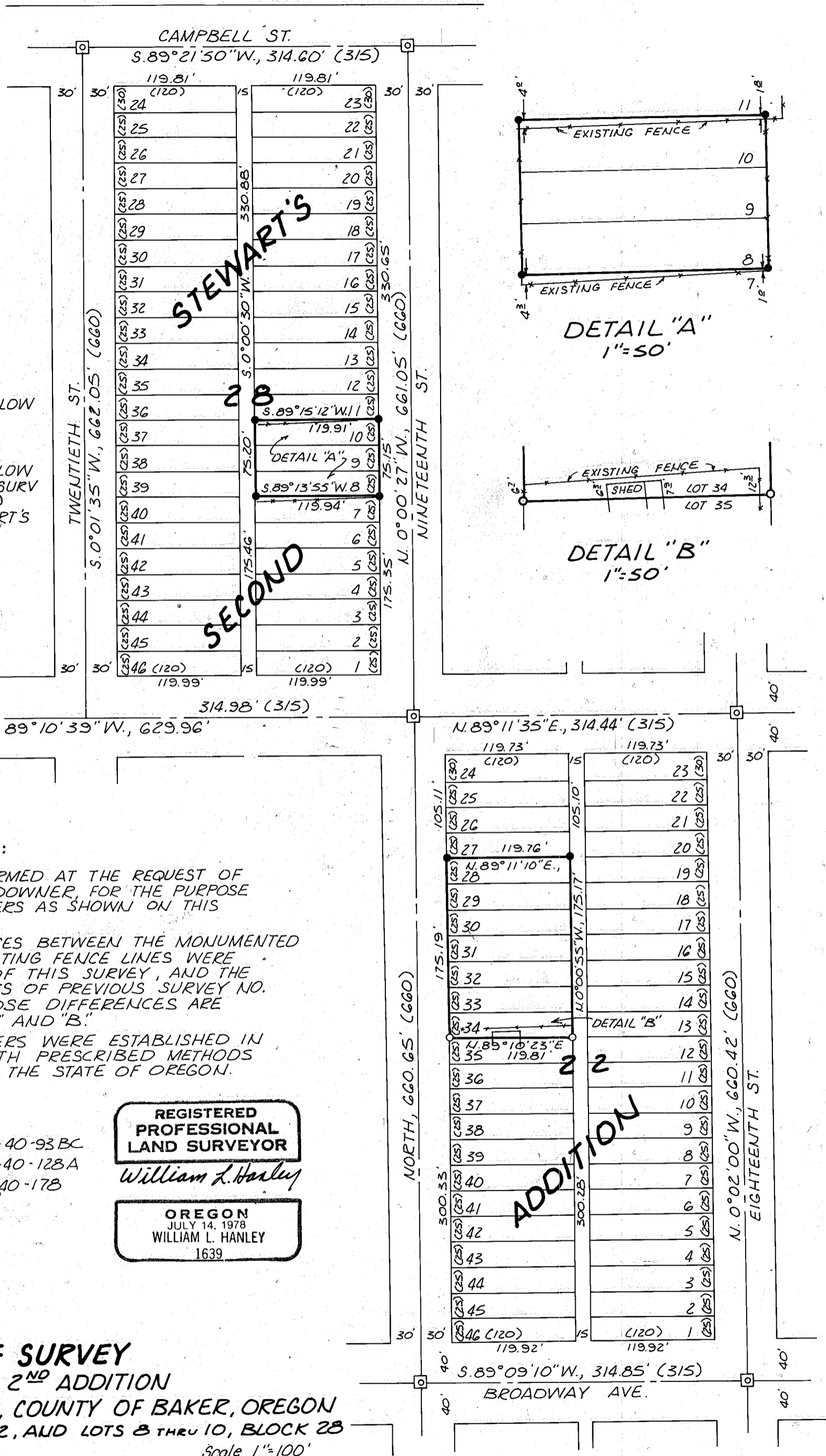


LEGEND

- FOUND 1/2" DIA. STEEL REBAR WITH YELLOW PLASTIC CAP MARKED: RPE 2808
- ◻ FOUND CITY MONUMENT IN BOX.
- SET 5/8" x 30" STEEL REBAR WITH YELLOW PLASTIC CAP MARKED: B HANLEY SURV ORLS 1639
- () RECORD OF OFFICIAL PLAT, STEWART'S FIRST AND SECOND ADDITIONS.



SURVEY NARRATIVE:

THIS SURVEY WAS PERFORMED AT THE REQUEST OF KENNETH SCHUH, LANDOWNER, FOR THE PURPOSE OF MARKING THE CORNERS AS SHOWN ON THIS PLAT.

SUBSTANTIAL DIFFERENCES BETWEEN THE MONUMENTED SURVEY LINES AND EXISTING FENCE LINES WERE FOUND AS A RESULT OF THIS SURVEY, AND THE RECOVERED MONUMENTS OF PREVIOUS SURVEY NO. 9-40-128A, AND THOSE DIFFERENCES ARE SHOWN IN DETAILS "A" AND "B."

LOT LINES AND CORNERS WERE ESTABLISHED IN FULL ACCORDANCE WITH PRESCRIBED METHODS AND THE STATUTES OF THE STATE OF OREGON.

REFERENCES

- BAKER COUNTY SURVEY NO. 9-40-93BC
- NO. 9-40-128A
- NO. 9-40-178

REGISTERED PROFESSIONAL LAND SURVEYOR
William L. Hanley

OREGON
 JULY 14, 1978
 WILLIAM L. HANLEY
 1639

MAP OF SURVEY
 IN STEWART'S 2ND ADDITION
 TO THE CITY OF BAKER, COUNTY OF BAKER, OREGON
 LOTS 28 THRU 34, BLOCK 22, AND LOTS 8 THRU 10, BLOCK 28
 Surveyed March 18, 1986 Scale 1"=100'
 FOR KENNETH SCHUH

FILED 3-21-86
 BAKER COUNTY SURVEYOR
 SURVEY NO. 940239