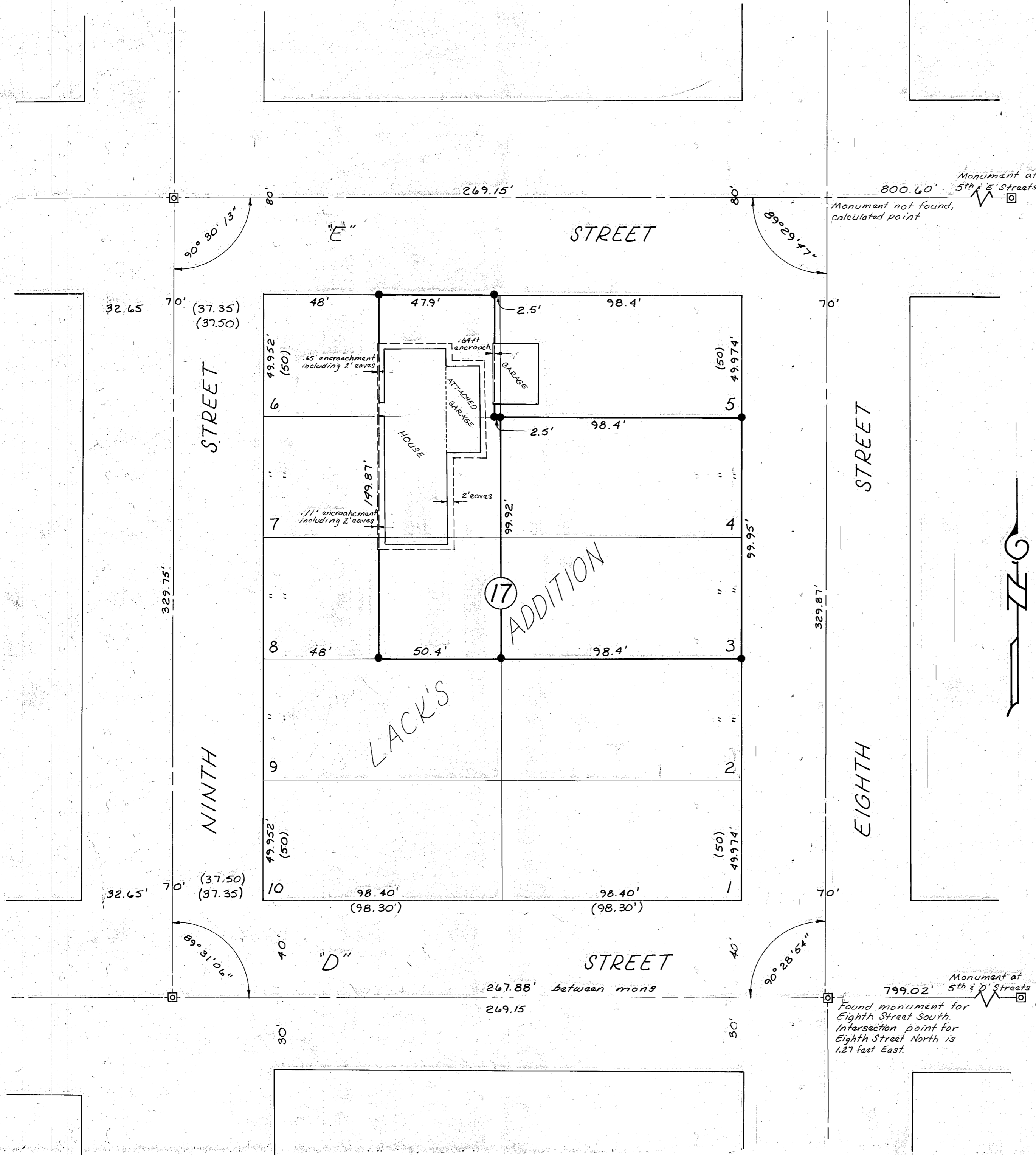


# NARRATIVE

This survey for Pioneer Federal Savings was made for the purpose of marking on the ground portions of lots 6, 7 & 8 (being TL 2600), Block 17, Lack's Addition, Baker, Oregon; and for Helen Berdahl was made for the purpose of marking on the ground Lots 3 & 4, Block 17, Lack's Addition, Baker, Oregon. City street monuments were recovered as shown hereon and surveys proceeded following standard practices. Property line encroachments were discovered in the field and are shown hereon.



# LEGEND

- — Set 5/8" x 30" rebar with plastic cap marked, HANLEY ENGINEERING, PLS 1206
- ⊠ — Found city street monument in box
- ( ) — Record distance

# MAP OF SURVEY

BLOCK 17, LACK'S ADDITION  
BAKER, OREGON

FOR  
PIONEER FEDERAL SAVINGS  
AND  
HELEN BERDAHL

JULY 23-26, 1985 AND APRIL 28, 1989

SCALE: 1" = 30'

REGISTERED  
PROFESSIONAL  
LAND SURVEYOR

*James D. Hanley*  
OREGON  
SEPTEMBER 23, 1977  
JAMES D. HANLEY  
1206

HANLEY ENGINEERING  
BAKER, OREGON

April 28, 1989  
FILED July 29, 1985

BAKER COUNTY SURVEYOR  
SURVEY NO. 9-40-229

9-40-284