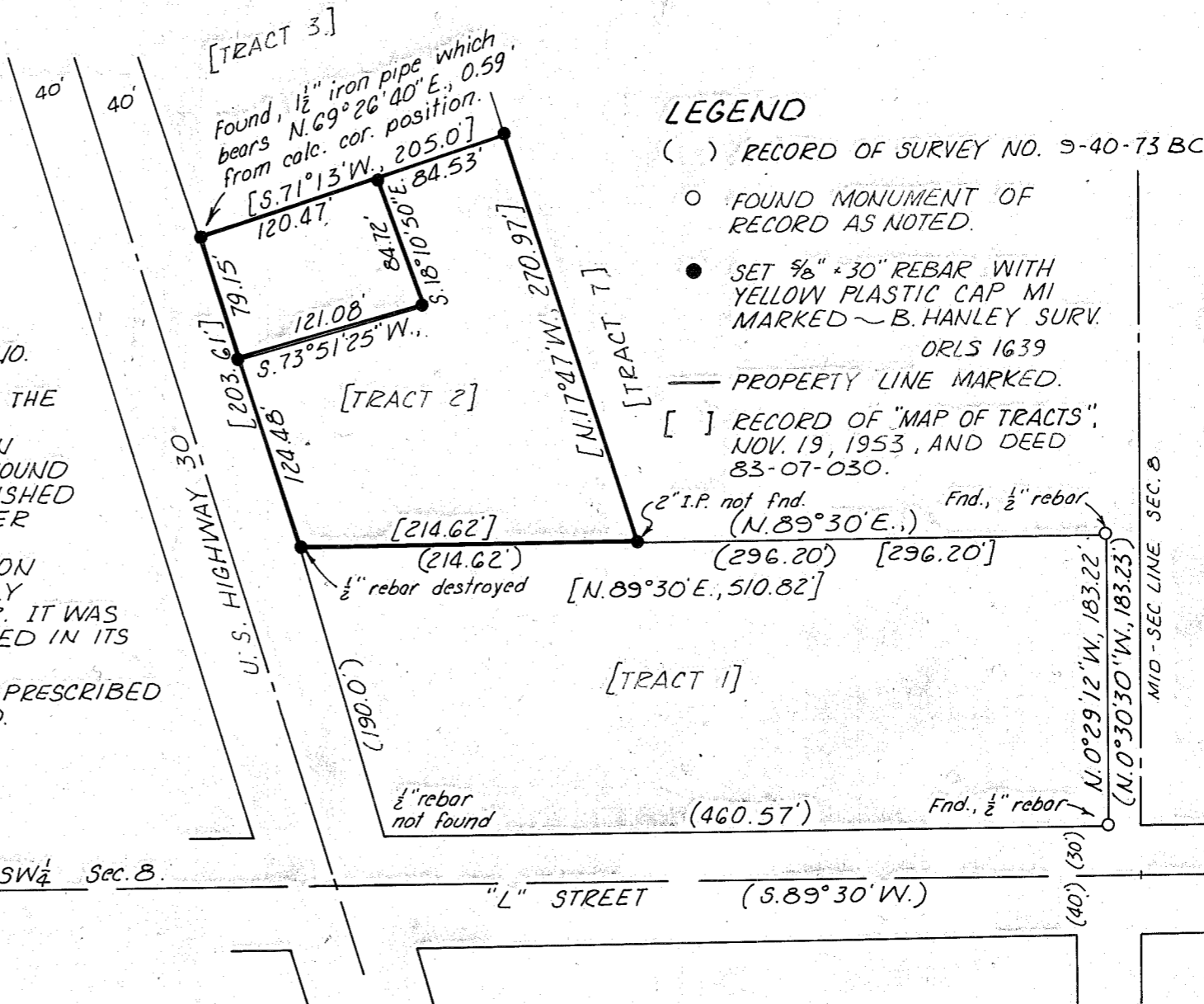


SURVEY NARRATIVE

THIS SURVEY WAS PERFORMED AT THE REQUEST OF IVAN GEINGER FOR THE PURPOSE OF PARTITIONING A TRACT OF LAND INTO TWO PARCELS AND THE PREPARATION OF LEGAL DESCRIPTIONS FOR EACH. THE TRACT SURVEYED IS DESCRIBED IN BAKER COUNTY DEEDS FILM VOLUME 83-07-030 AND PREVIOUSLY REFERRED TO AS TRACT 2, FEHRENBACH'S ADDITION, RECORDED ON "MAP OF TRACTS" FOR FERD PROCHNOW AND FILED IN BAKER COUNTY SURVEYS ON NOV. 19, 1953.

TRACT 1, OF THE ABOVE MENTIONED "MAP OF TRACTS" WAS RESURVEYED AND RECORDED UNDER BAKER COUNTY SURVEY NO. 9-40-73 BC ON MARCH 11, 1976, AND THE RECOVERED MONUMENTATION SHOWN ON THIS MAP IS THE BASIS FOR THE REESTABLISHMENT OF LOST OR REJECTED CORNER POSITIONS. THE SOUTHEAST CORNER OF TRACT 2, SHOWN RECOVERED IN SURVEY NO. 9-40-73 BC HAS BEEN DESTROYED. NO TRACE FOUND OF THE NORTHEAST CORNER AND THE PREVIOUSLY REESTABLISHED SOUTHWEST CORNER WAS APPARENTLY DESTROYED BY POWER POLE ERECTION. A 1/2" PIPE WAS RECOVERED NEAR THE REESTABLISHED NORTHWEST CORNER, HOWEVER, ITS POSITION WAS REJECTED DUE TO ADJACENT PROXIMITY OF RECENTLY PLACED UNDERGROUND TELEPHONE TRANSMISSION LINE RISER. IT WAS DETERMINED THE SAID RISER COULD NOT HAVE BEEN PLACED IN ITS POSITION WITHOUT DISLODGING THE FOUND PIPE. TRACT 2 IS REMONUMENTED IN FULL CONFORMANCE WITH PRESCRIBED METHODS, BASED ON THE REFERENCED SURVEYS OF RECORD.



LEGEND

- () RECORD OF SURVEY NO. 9-40-73 BC.
- FOUND MONUMENT OF RECORD AS NOTED.
- SET 3/8" x 30" REBAR WITH YELLOW PLASTIC CAP MARKED ~ B. HANLEY SURV. ORLS 1639
- PROPERTY LINE MARKED.
- [] RECORD OF "MAP OF TRACTS", NOV. 19, 1953, AND DEED 83-07-030.

The South line NE 1/4 SW 1/4 Section 8, T.9 S., E.40 E., W.M., bears S. 89° 30' W., as recorded on "MAP OF TRACTS" filed Nov. 19, 1953.

Found, 2" iron pipe for SW Cor., NE 1/4 SW 1/4 Sec. 8.

SURVEYOR'S CERTIFICATE

I, WILLIAM L. HANLEY, HEREBY CERTIFY THAT THIS PLAT, AND THE NOTES CONTAINED HEREON, ARE A TRUE REPRESENTATION OF A SURVEY PERFORMED BY ME AND THAT IT PROPERLY REPRESENTS THAT PARCEL KNOWN AS TRACT 2, FEHRENBACHS ADDITION, AND DESCRIBED IN BAKER COUNTY DEEDS, FILM VOLUME 83-07-030.

REGISTERED PROFESSIONAL LAND SURVEYOR
 William L. Hanley
 Baker, Oregon

OREGON
 JULY 14, 1978
 WILLIAM L. HANLEY
 1639

MAP OF SURVEY
 IN THE NE 1/4 SW 1/4 SEC. 8, T.9 S., R.40 E., W.M.,
 FEHRENBACH'S ADD'N.
 Surveyed Jan. 4 & March 28, 1985
 FOR IVAN GEINGER

Scale 1"=100'

FILED 6-11-85
 BAKER COUNTY SURVEYOR
 SURVEY NO. 9-40-227