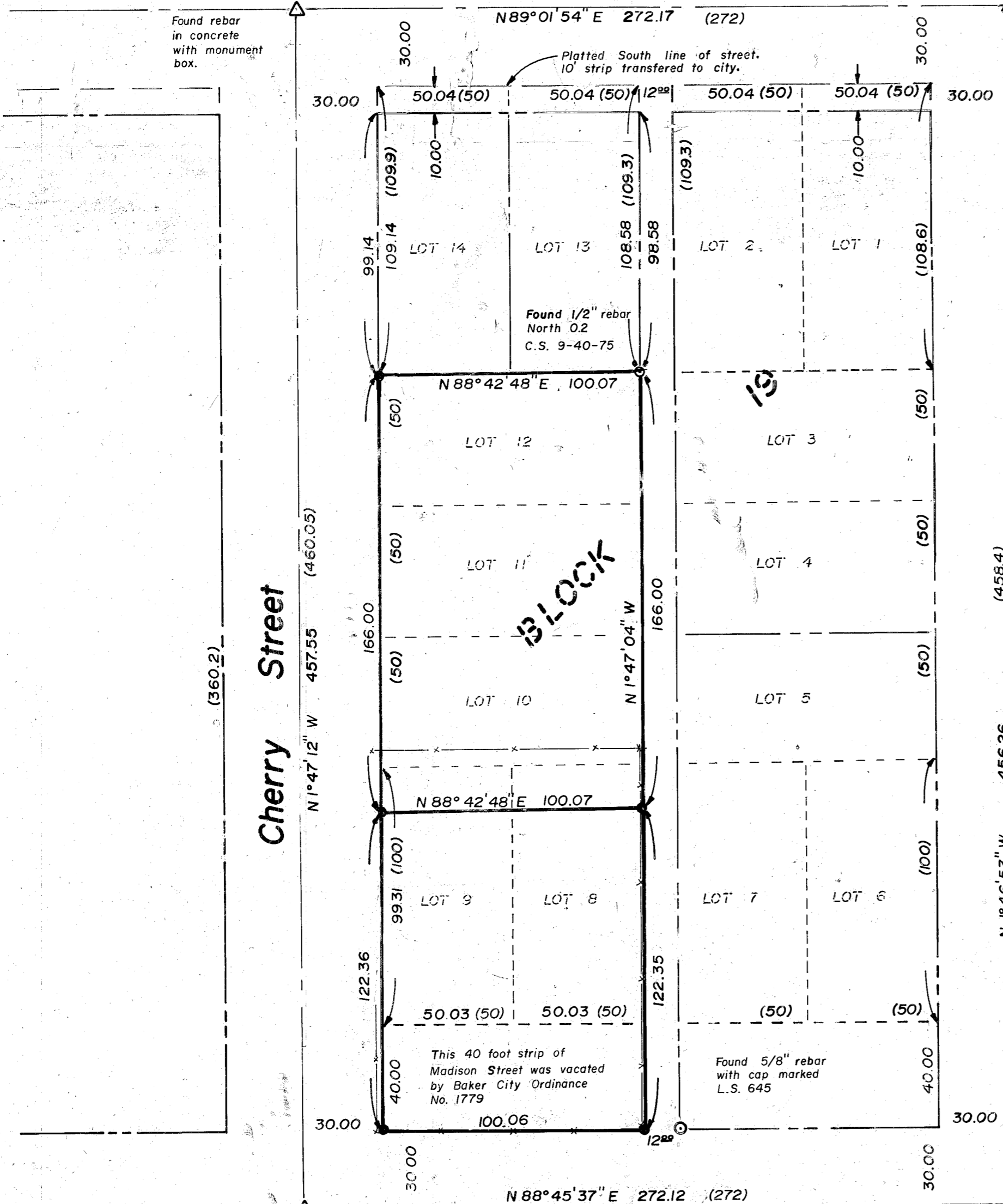


Campbell Street



LEGEND

- Set 5/8" x 30" rebar and cap marked L.S. 1952
- Found lot monument described
- △ Found City of Baker R/W monument described
- Property line
- - - Original subdivision lot lines
- Street R/W centerline
- () Original platted distance
- 123.43 Measured distance
- Boundary of this survey

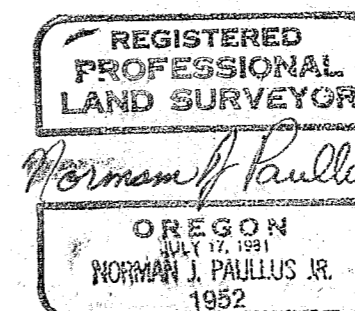
REFERENCES

- C.S. No. 9-40-75
- C.S. No. 9-40-88
- Plat of East Side Addition
- City of Baker Monument Map (Filed at city)
- City of Baker Vacation Ordinance No. 1779

NARRATIVE

On Dec. 18, 1983 I made the survey with the results shown. The distances shown as original distances are the average of both sides of the street. This survey was done with a Topcon TL-6DE theodolite and a Lufkin 300 steel tape with temperature correction applied for the 26° air temperature encountered. During this survey, I found no encroachment of building structures. The original called distance shown in () for Cherry Street and Balm Street are not given but the average of the values given to their east and west right-of-ways. No noticeable irregularities were found on the ground or in the deeds (including original plat) other than the differences in distances as shown on this survey.

FILED Dec. 30, 1983
 BAKER COUNTY SURVEYOR
 SURVEY NO. 9-40-206



Paullus-Chevalier & Associates

La Grande, Oregon

Lots 8-12 in Block 19 and the North 40' feet of vacated Madison Street located in East Side Add. to the City of Baker, Baker County, Oregon

Surveyed for: F. Valenzuela Surveyed by: NJP 12/83

Scale: 1"=40' Drawn by: NJP 12/83 Page 1 of 1