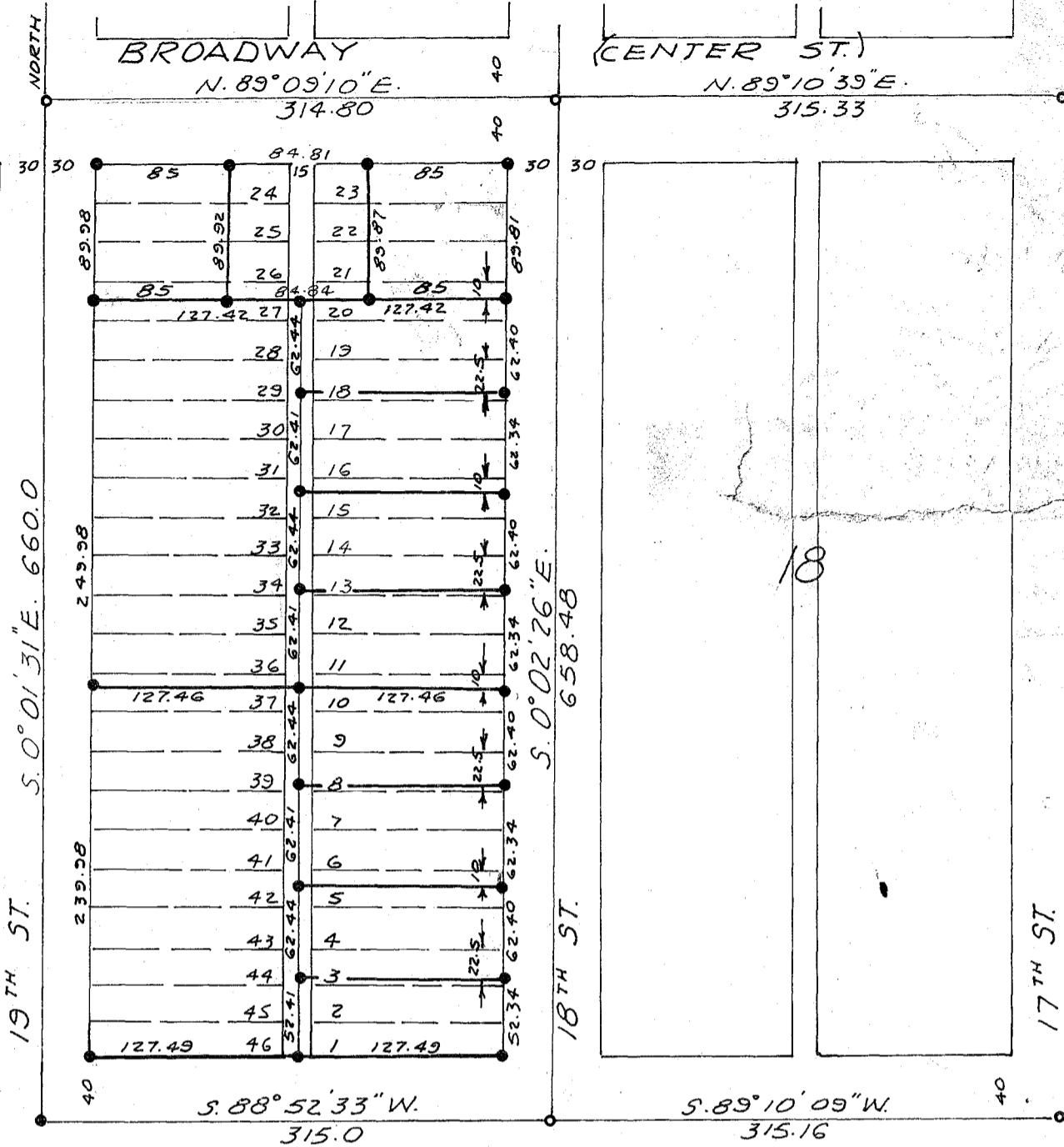


BASIS OF BEARING: 19th Street bears North bet. Broadway and Baker for the purpose of this survey.

COURT AVE.



LEGEND:

- o Found City Monument
- Set 5/8-inch x 30-inch rebar with plastic cap marked "HANLEY ENGR PLS 1206"

NARRATIVE:

City monuments were found in place at all street intersections except at Court Avenue and 19th Street. Original plat distances of 660 feet from Broadway and 315 feet from 18th Street were used to monument this intersection. Standard survey procedures were then employed to perform the monumentation shown above.

MAP OF SURVEY  
BLOCK 23, STEWART'S SECOND ADDITION  
BAKER, OREGON

Surveyed for Orion Development Corporation  
March 29-April 4, 1983 Scale 1" = 100'

REGISTERED  
PROFESSIONAL  
LAND SURVEYOR

*James D. Hanley*  
Baker, Ore.

OREGON  
SEPTEMBER 23, 1977  
JAMES D. HANLEY  
1206

FILED April 11 1983

BAKER COUNTY SURVEYOR

SURVEY NO. 9-40-199A