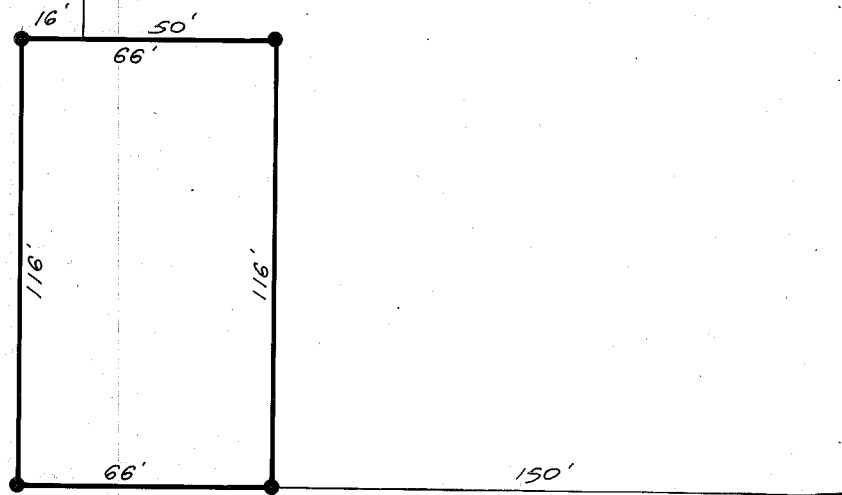


1/4 Cor. bet. Secs. 16 & 17
T. 9S., R. 40E., W.M.

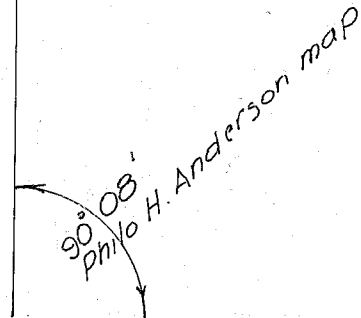
ELIZABETH ST.
N. 01° 12' 03" W.



LEGEND

- ◻ FOUND MONUMENT IN BOX
- SET 5/8" x 30" REBAR

GROVE ST.
N. 01° 12' 03" W.



Bearings based on
City Survey of 1970.

CLARK ST.

CAMPBELL ST.
N. 88° 55' 57" E., 944.13'

Bet. city mons. 932.59'

REGISTERED
PROFESSIONAL
LAND SURVEYOR

James D. Hanley
OREGON
SEPTEMBER 23, 1977
JAMES D. HANLEY
1206

MAP OF SURVEY

IN THE SW 1/4 NW 1/4 SECTION 16, T. 9S., R. 40E., W.M.
Surveyed Sept. 25 & Oct. 17, 1979 Scale 1" = 50'

FOR WADE DAHLIN

FILED Nov. 29, 1979
BAKER COUNTY SURVEYOR
SURVEY NO. 9-40-180 BC