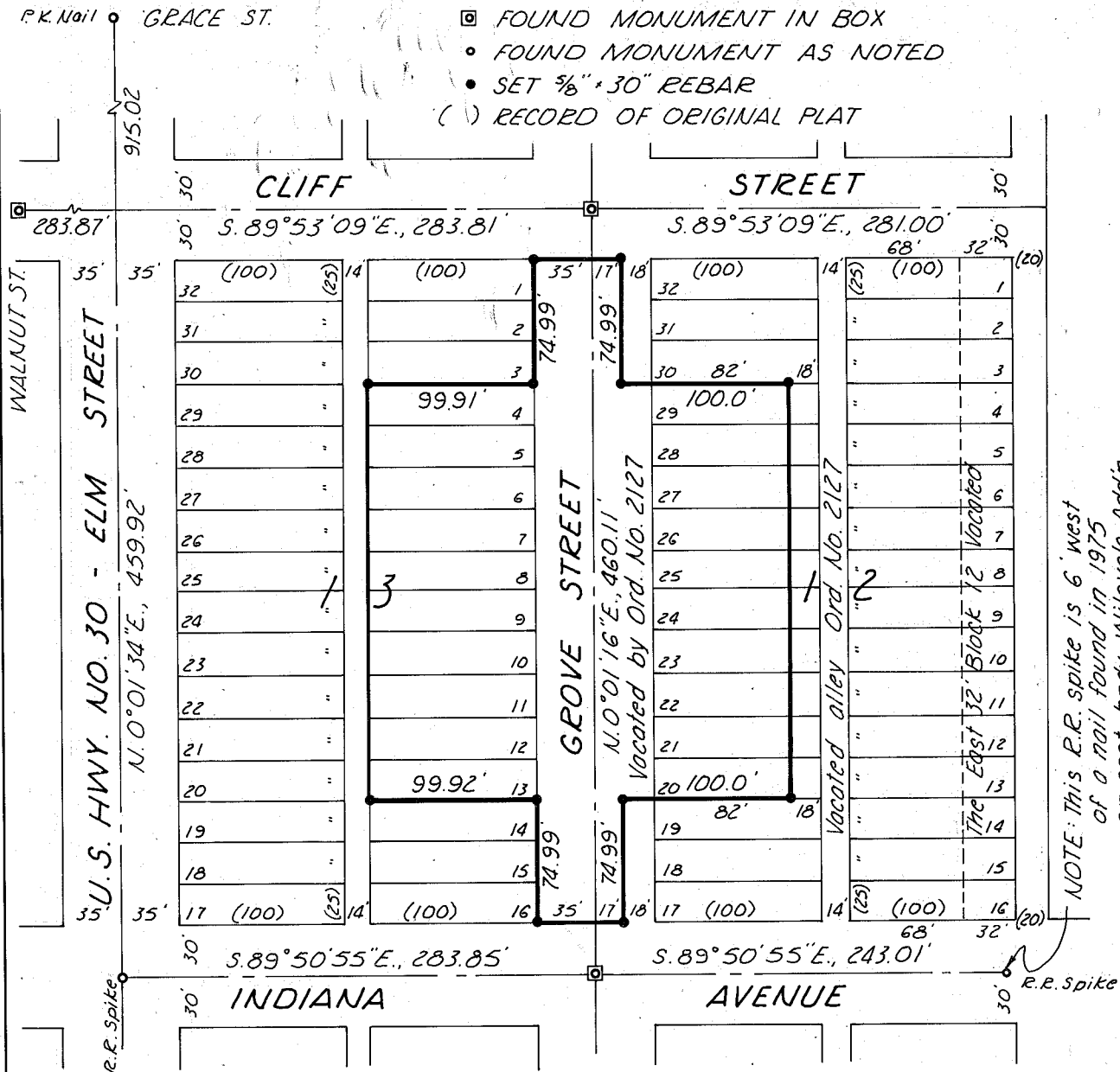


LEGEND

- ◻ FOUND MONUMENT IN BOX
- FOUND MONUMENT AS NOTED
- SET 5/8" x 30" REBAR
- () RECORD OF ORIGINAL PLAT



NARRATIVE: Intersection of Elm & Cliff streets by intersecting line of monuments. Centerline East street by extending line of monuments along Cliff street and Indiana street at recorded plot distance.

**MAP OF SURVEY
IN BLOCKS 12 & 13, WILOVALE ADDITION
TO BAKER, OREGON**

Surveyed Feb. 13, 1981 Scale 1"=100'

FOR MARTY FRANTZ

FILED Feb. 16, 1981
BAKER COUNTY SURVEYOR
SURVEY NO. 9-40-170 BC

REGISTERED
PROFESSIONAL
LAND SURVEYOR
James D. Hanley
OREGON
SEPTEMBER 23, 1977
JAMES D. HANLEY
1206