

**NARRATIVE TO BLOCK 12, HASKELL  
AND BLOCK 12, HOT SPRINGS ADD'N**

North boundary located on a line between the found NW corner of Block 13, Hot Springs Addition and a point on the centerline of Birch St. and 30 feet south of the found monument at Birch & Baker Sts.

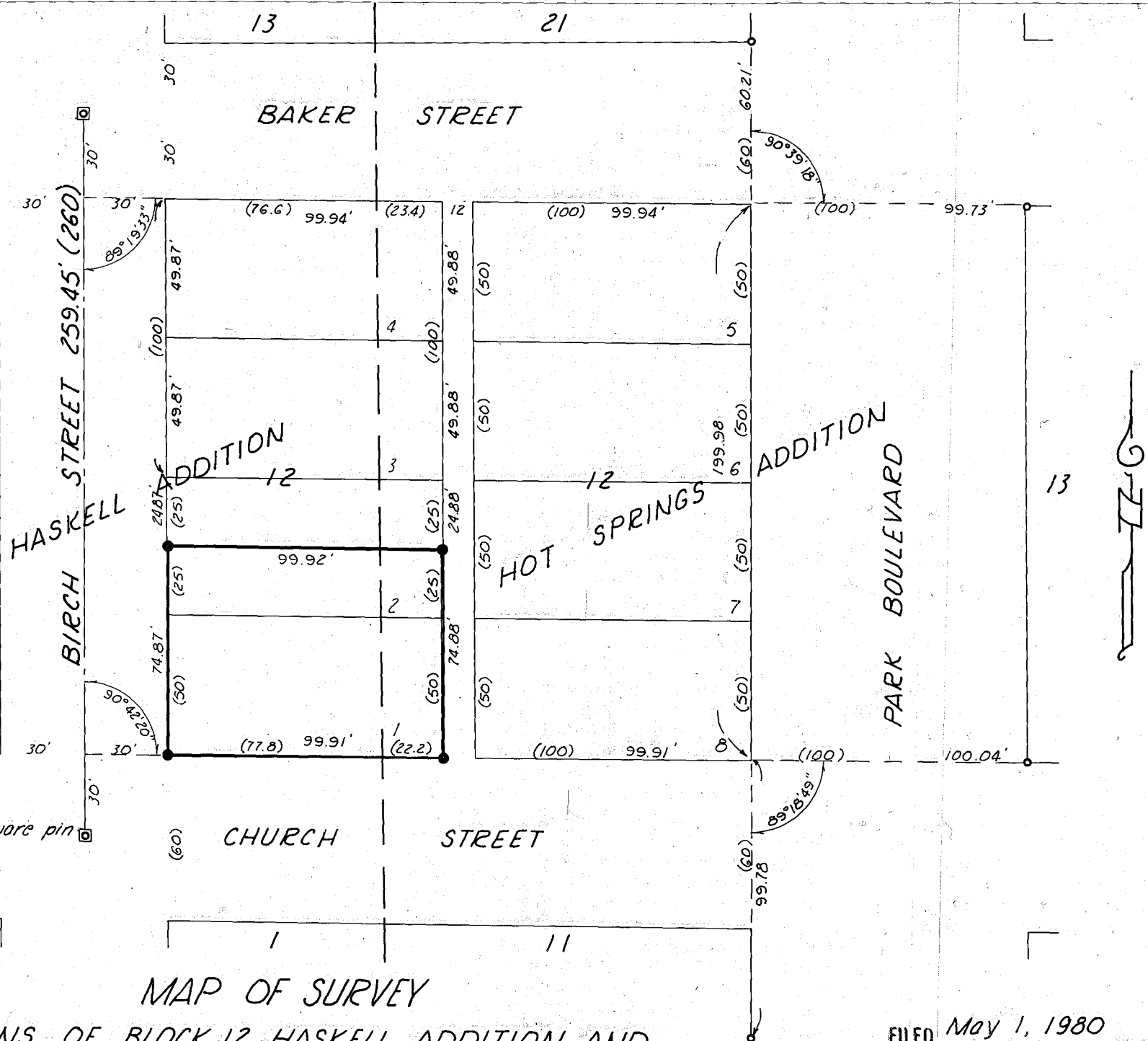
South boundary located on a line between the found SW corner of Block 13, Hot Springs Addition and a point on the centerline of Birch Street and 30 feet north of the found monument at Birch & Church Sts.

East boundary located on a line between the found SE corner of Block 21, Hot Springs Addition and a found monument on the east line of Block 11, Hot Springs Add'n.

West boundary located parallel to and 30 feet east of the monumented centerline of Birch St.

**LEGEND**

- ◻ Found street monument in box.
- Found original monument - 1" square pin
- Set 3/8" x 30" rebar
- ( ) Plot record distance



**REGISTERED  
PROFESSIONAL  
LAND SURVEYOR**

*William L. Hanley*

**OREGON  
JULY 14, 1978  
WILLIAM L. HANLEY  
1639**

**MAP OF SURVEY**

**PORTIONS OF BLOCK 12, HASKELL ADDITION AND  
BLOCK 12, HOT SPRINGS ADDITION TO THE CITY OF BAKER, OREGON**

Surveyed March 26 & April 10, 1980 Scale 1"=50'

For Brent Gyllenberg

FILED May 1, 1980  
BAKER COUNTY SURVEYOR  
SURVEY NO. 9-40-167

167