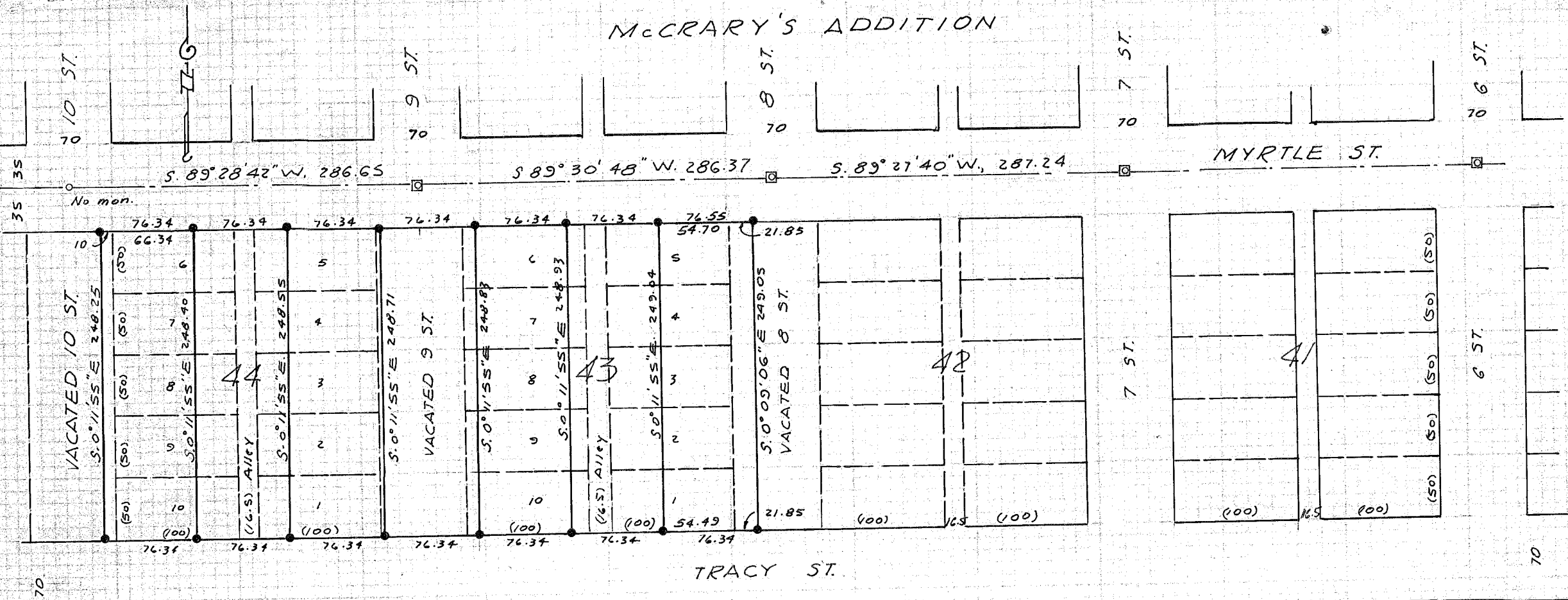


# MCCRARY'S ADDITION



Found monument at  $\frac{1}{2}$  11 St and South line of TRACY ST. Found mon. at  $\frac{1}{2}$  11 St. and Grace ST. Found mon. at  $\frac{1}{2}$  TRACY and 5 ST. Found mon. at 8 ST and CARTER ST., and at 10 ST. and CARTER ST. Projected street centerlines determine original boundaries of Lots 42, 43 and 44

### LEGEND

- ◻ Found city monument
- Set  $\frac{1}{2}$ " or  $\frac{5}{8}$ " steel rebar
- ( ) Platted subdivision distance

### MAP OF SURVEY

7 TRACTS IN BLOCKS 43 and 44  
MCCRARY'S ADDITION, BAKER, ORE.

Surveyed May 19 - July 1, 1978 For C. and O.  
Fagenstrom, John Day Stage, Baker, Oregon

Scale 1" = 100'

FILED July 28, 1979  
BAKER COUNTY SURVEYOR  
SURVEY NO. 9-40-162-B

REGISTERED  
PROFESSIONAL  
LAND SURVEYOR

James D. Hanley  
OREGON  
SEPTEMBER 23, 1977  
JAMES D. HANLEY  
1206