

BAKER ST

See Philo H. Anderson
Map of May 11 & 12,
1954 for distance
R/W to Line of
Monuments.



NINTH ST.
Line of Monuments

Line of Monuments

EIGHTH ST.

BAKER ST.

256.71

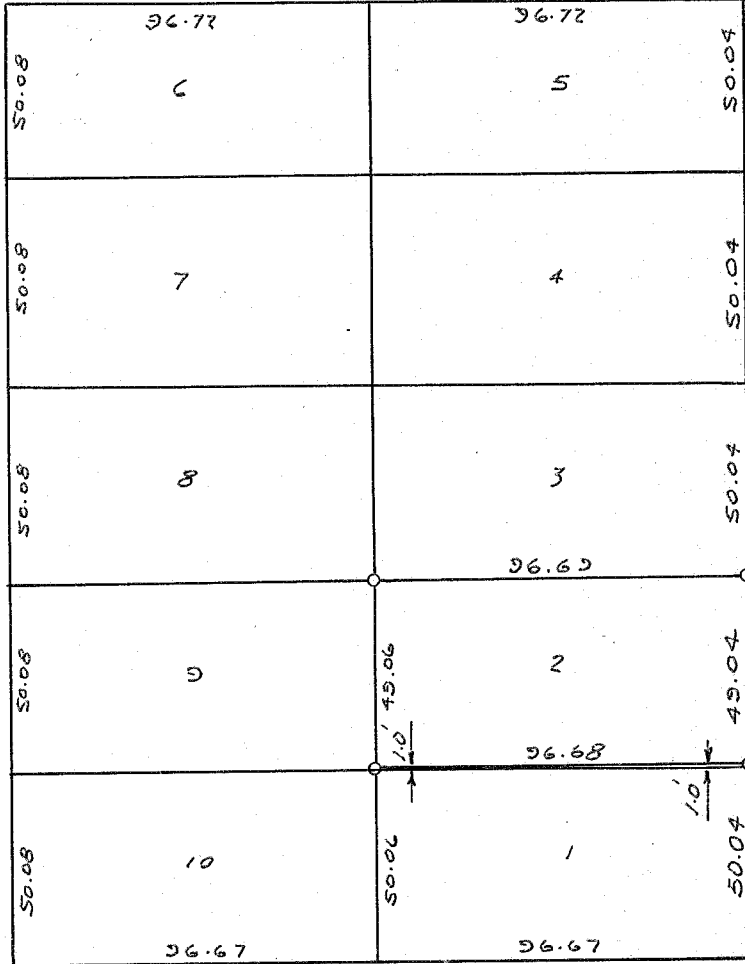
CHURCH ST.

256.57

330.43

26.75

28.25



LEGEND:

- ⊠ Found City Monument
- Set 5/8" x 30" rebar

MAP OF SURVEY

LOT 2, BLOCK 10, J.H. PARKER'S ADD'N,
BAKER, OREGON,
EXCEPT THE SOUTH ONE FOOT THEREOF.

Surveyed June 7 & 8, 1979
For Eddie Thomas

Scale 1"=50'

REGISTERED
PROFESSIONAL
LAND SURVEYOR

James D. Hanley

OREGON
SEPTEMBER 23, 1977
JAMES D. HANLEY
1206

FILED June 11, 1979

BAKER COUNTY SURVEYOR

SURVEY NO. 9-40-160