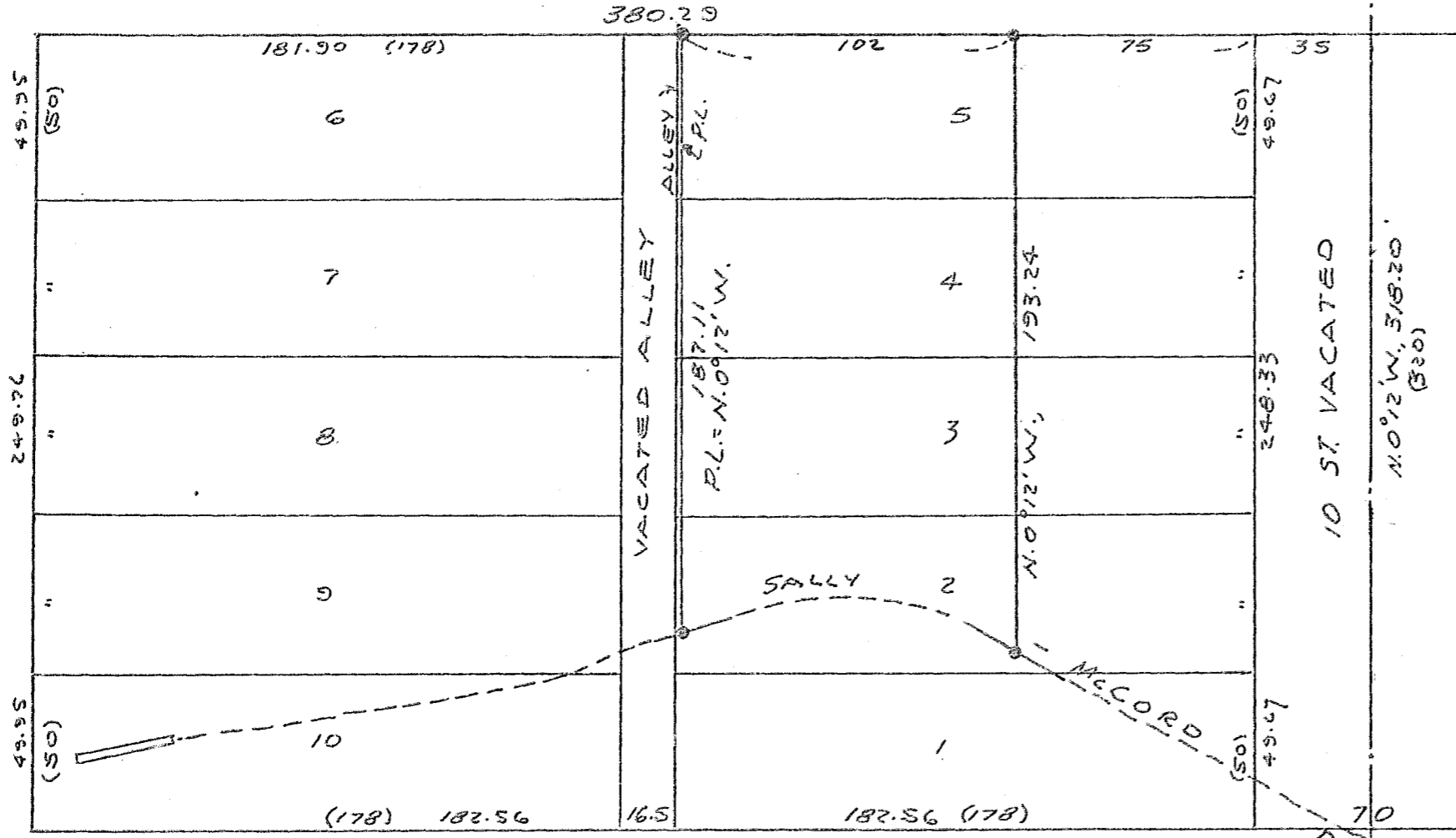


11 ST. (AS PLATTED, MCCRARY'S)
 5.0°06'19"W, 319.89 (320)

MYRTLE ST.

5.89°48'19"W, 450.10 (442.5)



LEGEND

- Found mon.
- Set 5/8" x 30" rebar
- () Plat distance

REGISTERED
 PROFESSIONAL
 LAND SURVEYOR

James D. Haynes

OREGON
 SEPTEMBER 1975
 JAMES D. HAYNES
 1206

This drwg. shows original
 plat meas. TRACY STREET
 relocation, shown on plat
 of HILLCREST ADDN.

N. 89° 35' 29" E., 1872.51 to mon. 5th St. 1/2

MAP OF SURVEY
 IN BLOCK 45, MCCRARY ADDITION,
 BAKER, OREGON

For James D. Haynes

June 1975

Scale 1" = 50'

7-40-152A