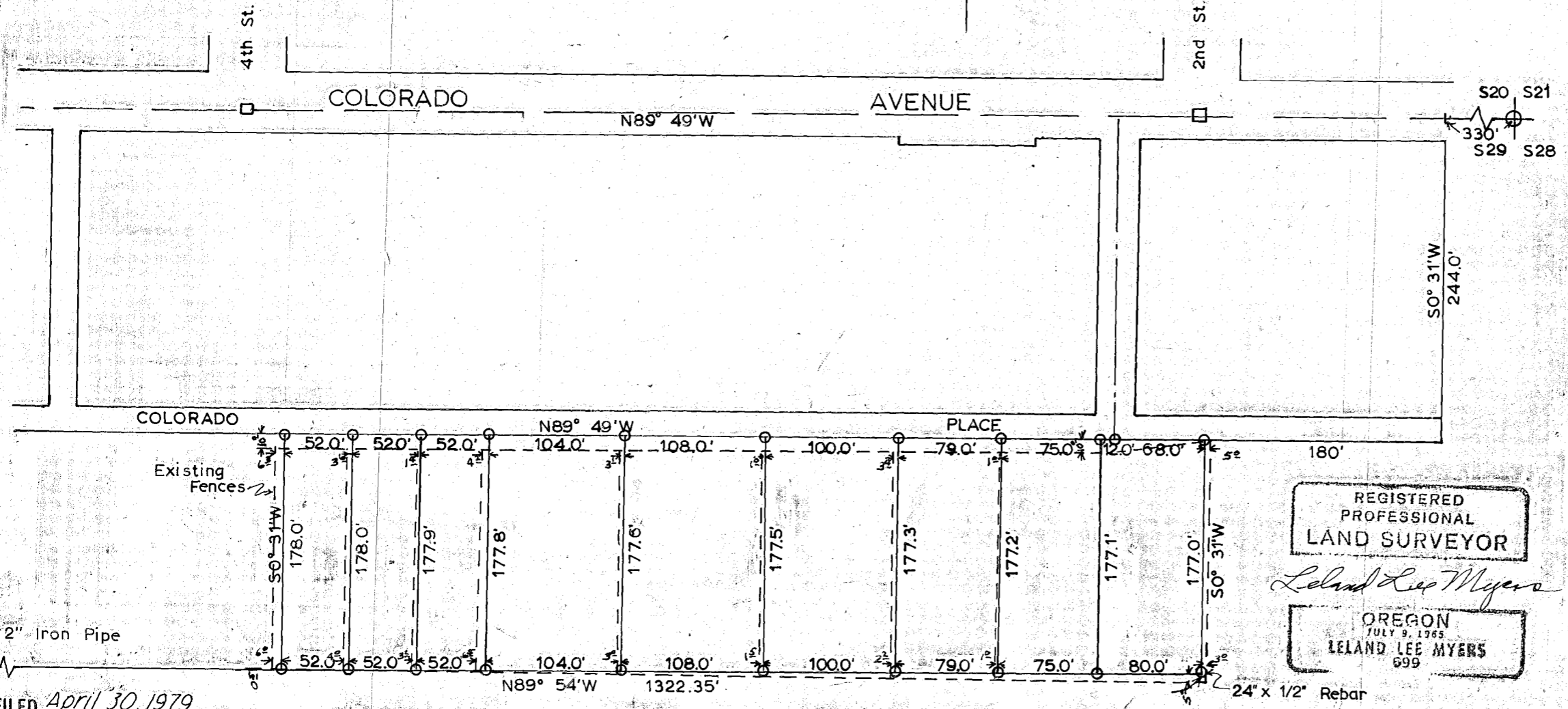
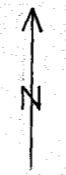


MAP OF SURVEY  
 NE 1/4 NE 1/4, SEC. 29, T9S, R40E, WM  
 CITY OF BAKER, BAKER COUNTY, OREGON  
 For Ray Kootz

March 9, 1979

Scale 1" = 100'



REGISTERED  
 PROFESSIONAL  
 LAND SURVEYOR

*Leland Lee Myers*

OREGON  
 JULY 9, 1965  
 LELAND LEE MYERS  
 699

FILED April 30, 1979  
 BAKER COUNTY SURVEYOR  
 SURVEY NO. 9-46 154 A-BC